

1558

161

U.P.R.N. ....

Process ID # 110664

Ward of Naparima

County of Victoria

Cadastral Sheet G.7.F 63B

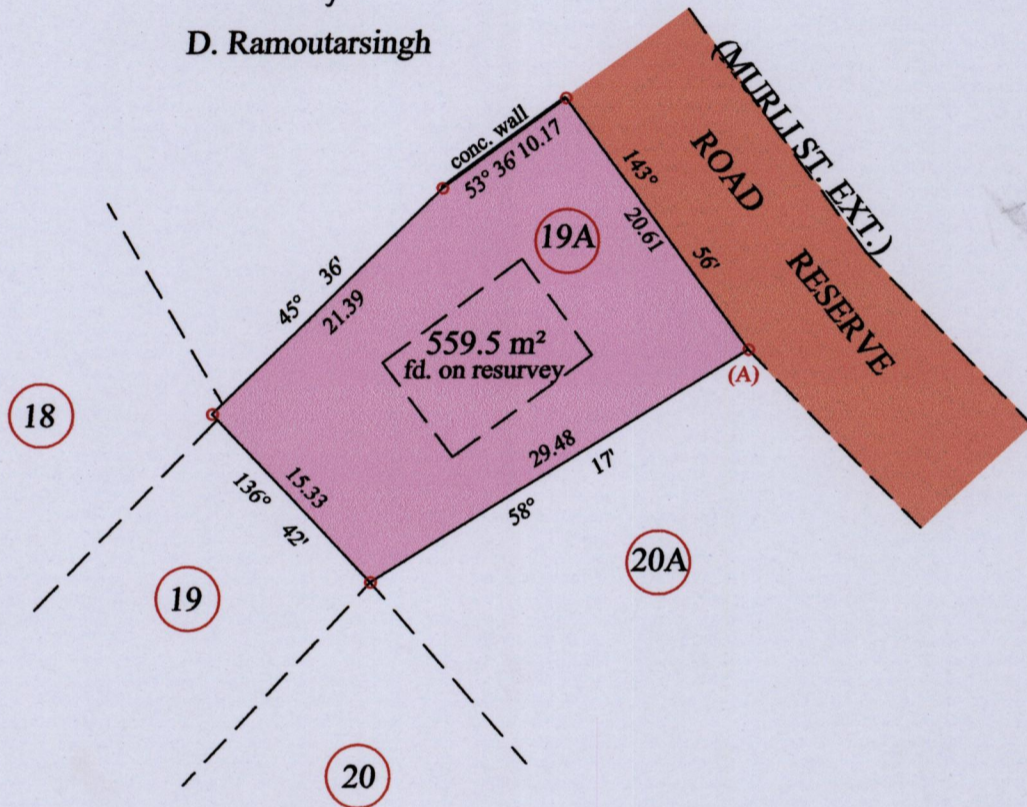
LA ROMAINE

1/b



n. or f.

D. Ramoutarsingh



At Station (A)  
E 0665276  
N 1132928  
Reading taken with  
Handheld G.P.S.  
U.T.M. Zone 20  
Naparima  
± 5 m.

o Denotes Iron put except stated otherwise.

SCALE : 1:500

Note: Bearings are U.T.M. grid based on solar observations

Distances are in metres

PLAN of a parcel of land coloured pink in the Ward of Naparima

Containing five hundred and fifty nine point five square metres

Surveyed by me, with due authority, in September 2014 for Seaton Williams

Certified Correct in accordance with Regulation 25(1) of the Land Surveyors Regulations 1998

Checked by .....

Entered on ..... Trinidad & Tobago Land Surveyor ..... 17.06.2015



MINISTRY OF FOOD PRODUCTION  
LAND AND MARINE AFFAIRS  
JUN 17 2015  
#231  
Lands & Surveys Division