

Process ID# 110659

1558

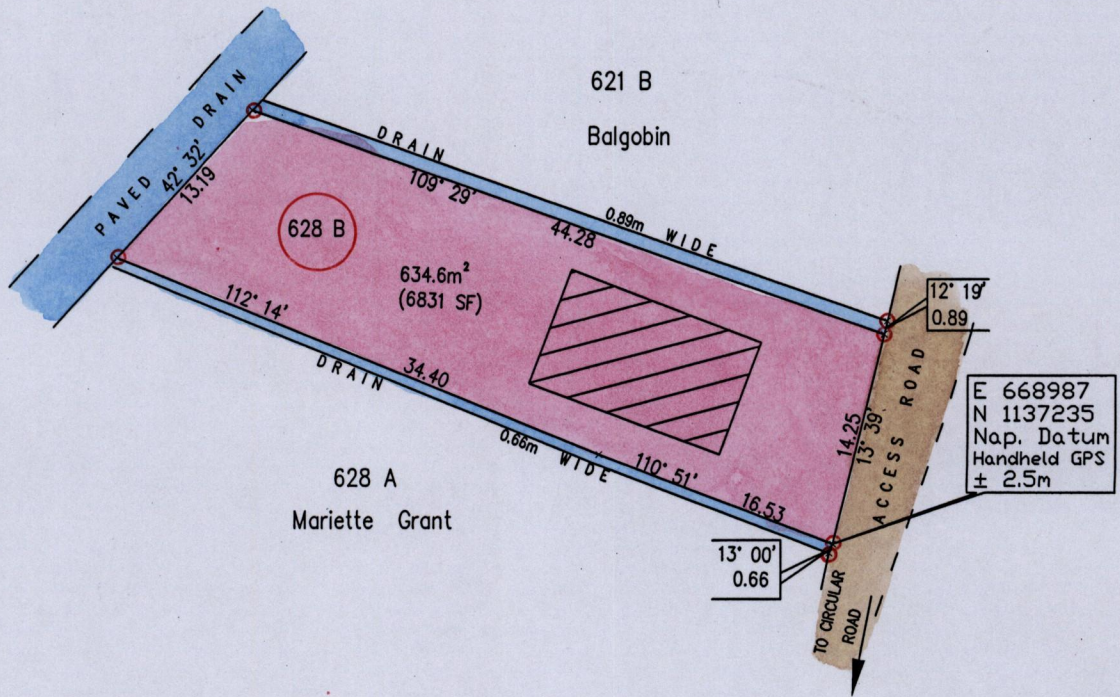
City of San Fernando

159

County of Victoria

Cadastral Sheet $\frac{53F}{1/c}$ $\frac{G.3.F.}{1/d}$

VISTABELLA ESTATE



SCALE 1/500

Note: To obtain compass bearings subtract 3 minutes.

Distances are in metres

PLAN of a Parcel of land coloured pink in the City of San Fernando
Containing six hundred and thirty four point six square metres

Prepared by me with due authority in June 2015 from a survey done by
myself in July 2007 for David Munroe

In accordance with Regulation 25(1) of the Land Surveyors Regulations 1998,

I certify that this plan is a true representation of the plan filed

Checked by.....

Michael Boucaud TTLS

Entered.....

Trinidad & Tobago Land Surveyor.....

8 June 2015

