

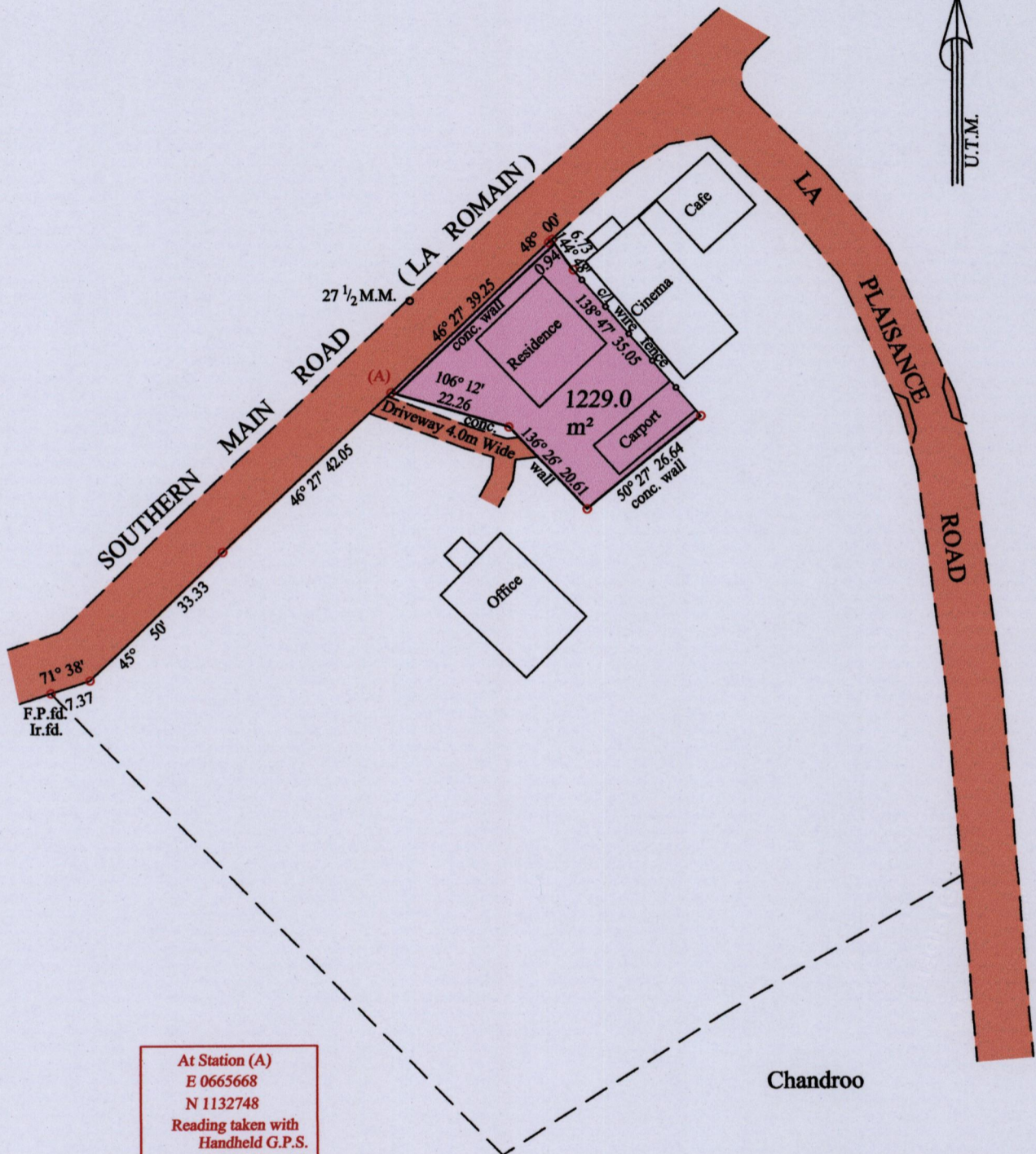
Process SA#110622

U.P.R.N.

Ward of Naparima

County of Victoria

Cadastral Sheet G.7 63.B. 1/b



At Station (A)
E 0665668
N 1132748
Reading taken with
Handheld G.P.S.
U.T.M. Zone 20
Naparima
± 5 m.

Chandroo

Vide Bk.969 fol.181

SCALE : 1:1250

o Denotes Iron put except stated otherwise.

Note: Bearings are U.T.M. grid based on solar observations

Distances are in metres

PLAN of a parcel of land coloured pink in the Ward of Naparima

Containing one thousand two hundred and twenty nine point zero square metres

Surveyed by me, with due authority, in July 2014 for Mrs. Chandroo Maharaj

Certified Correct in accordance with Regulation 25(1) of the Land Surveyors Regulations 1998

Checked by

Entered on Trinidad & Tobago Land Surveyor 2015

