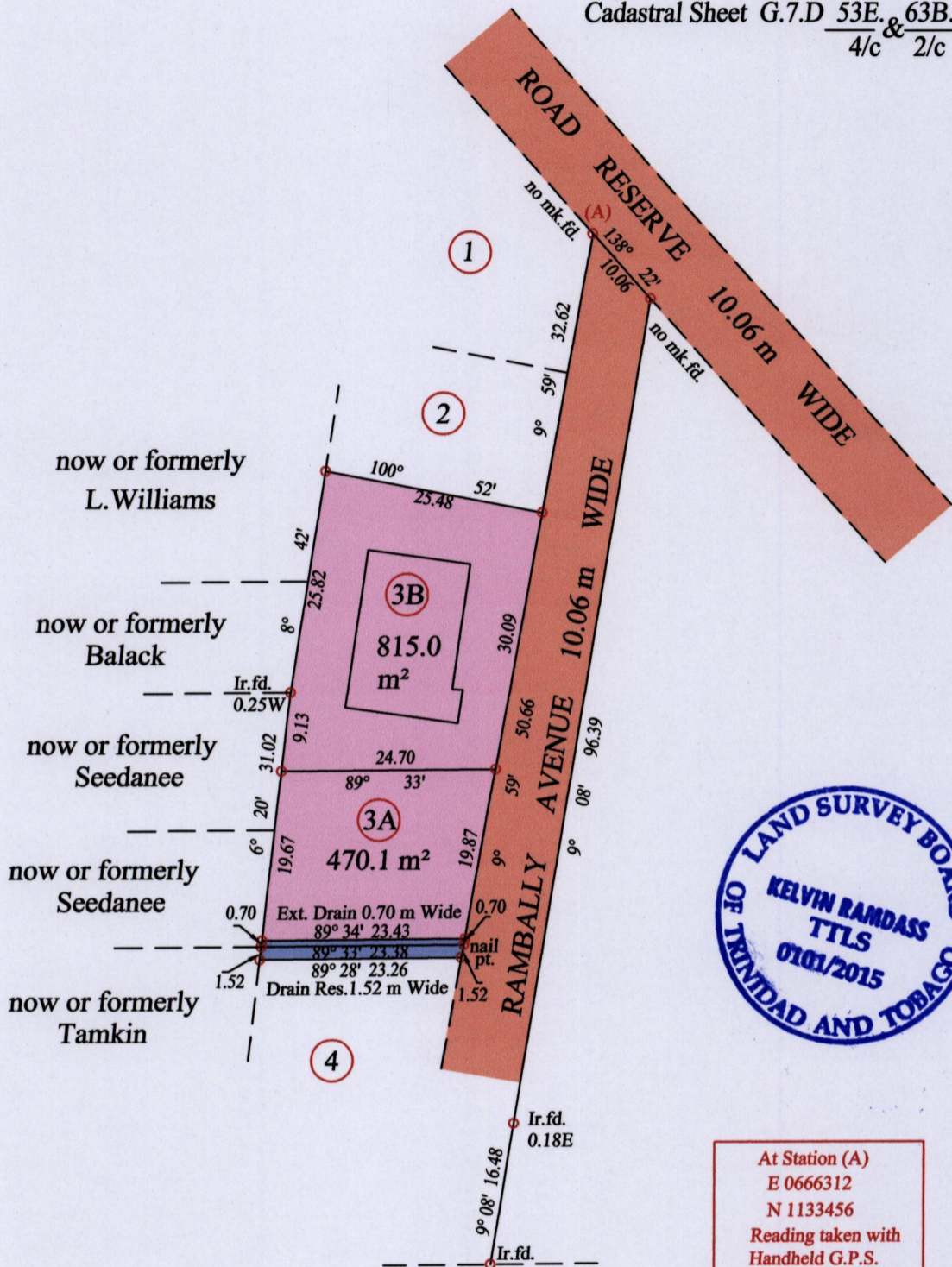
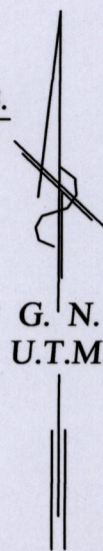


Process ID# 109760
U.P.R.N.

Ward of Naparima
County of Victoria
Cadastral Sheet G.7.D $\frac{53E.}{4/c}$ & $\frac{63B.}{2/c}$



At Station (A)
E 0666312
N 1133456
Reading taken with
Handheld G.P.S.
U.T.M. Zone 20
Naparima
± 5 m.

○ Denotes Iron put except stated otherwise.

SCALE : 1:750

Note: Bearings are U.T.M. grid based on solar observations Distances are in metres

PLAN of 2 Parcels of land coloured pink in the Ward of Naparima
Containing together one thousand two hundred and eighty five point one square metres
Surveyed by me, with due authority, in May 2015 for Krishna Rambally
Certified Correct in accordance with Regulation 25(1) of the Land Surveyors Regulations 1998

Checked by *Kelvin Rambally*

Entered on Trinidad & Tobago Land Surveyor *27/5/15* 2015

