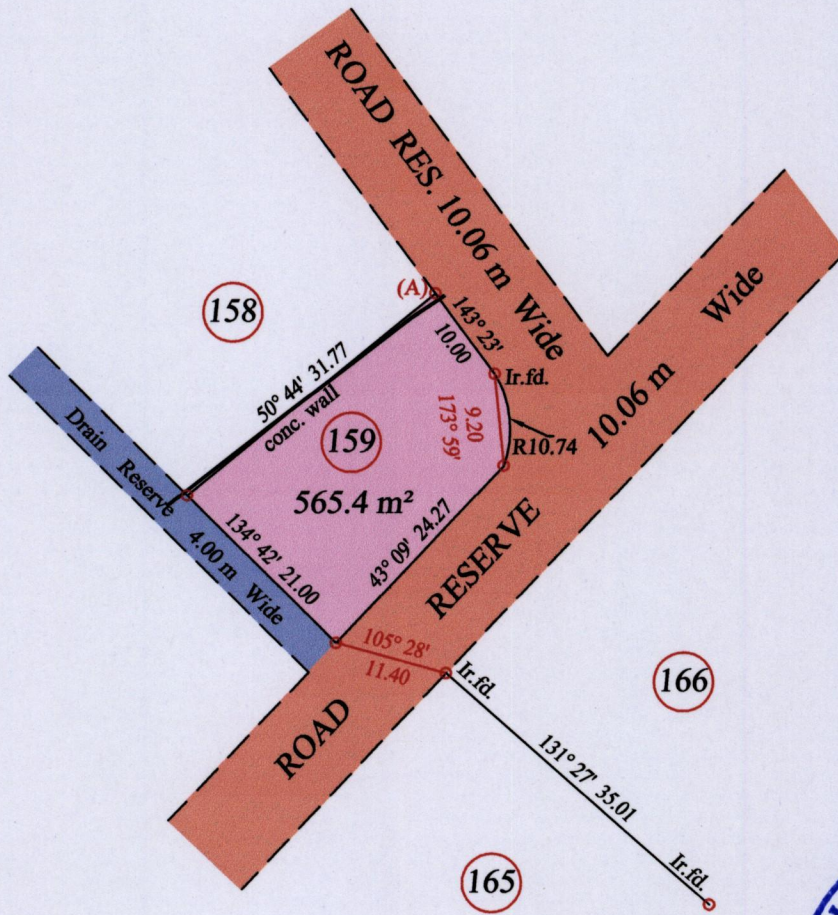
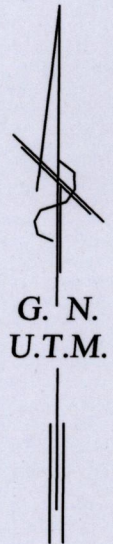


1558

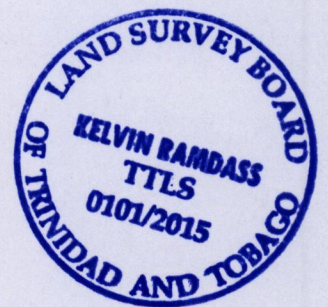
143

Process ID# 109758  
U.P.R.N. ....

Ward of Naparima  
County of Victoria  
Cadastral Sheet G.8.N 63C.  
DEBE PHASE 11 3/a



At Station (A)  
E 0669824  
N 1129461  
Reading taken with  
Handheld G.P.S.  
U.T.M. Zone 20  
WGS84  
± 5 m.



Vide Plan J.B. 109

○ Denotes Iron put except stated otherwise.

SCALE : 1:750

Note: Bearings are U.T.M. grid based on solar observations

Distances are in metres

PLAN of a parcel of land coloured pink in the Ward of Naparima

Containing five hundred and sixty five point four square metres

Surveyed by me, with due authority, in May 2015 for Lutchmipersad Ramnawaj

Certified Correct in accordance with Regulation 25(1) of the Land Surveyors Regulations 1998

Checked by ..... *Kelvin Ramdass* .....

Entered on ..... Trinidad & Tobago Land Surveyor *Kelvin Ramdass* ..... 2015

