

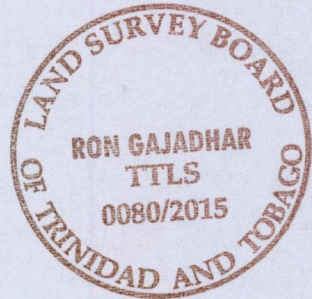
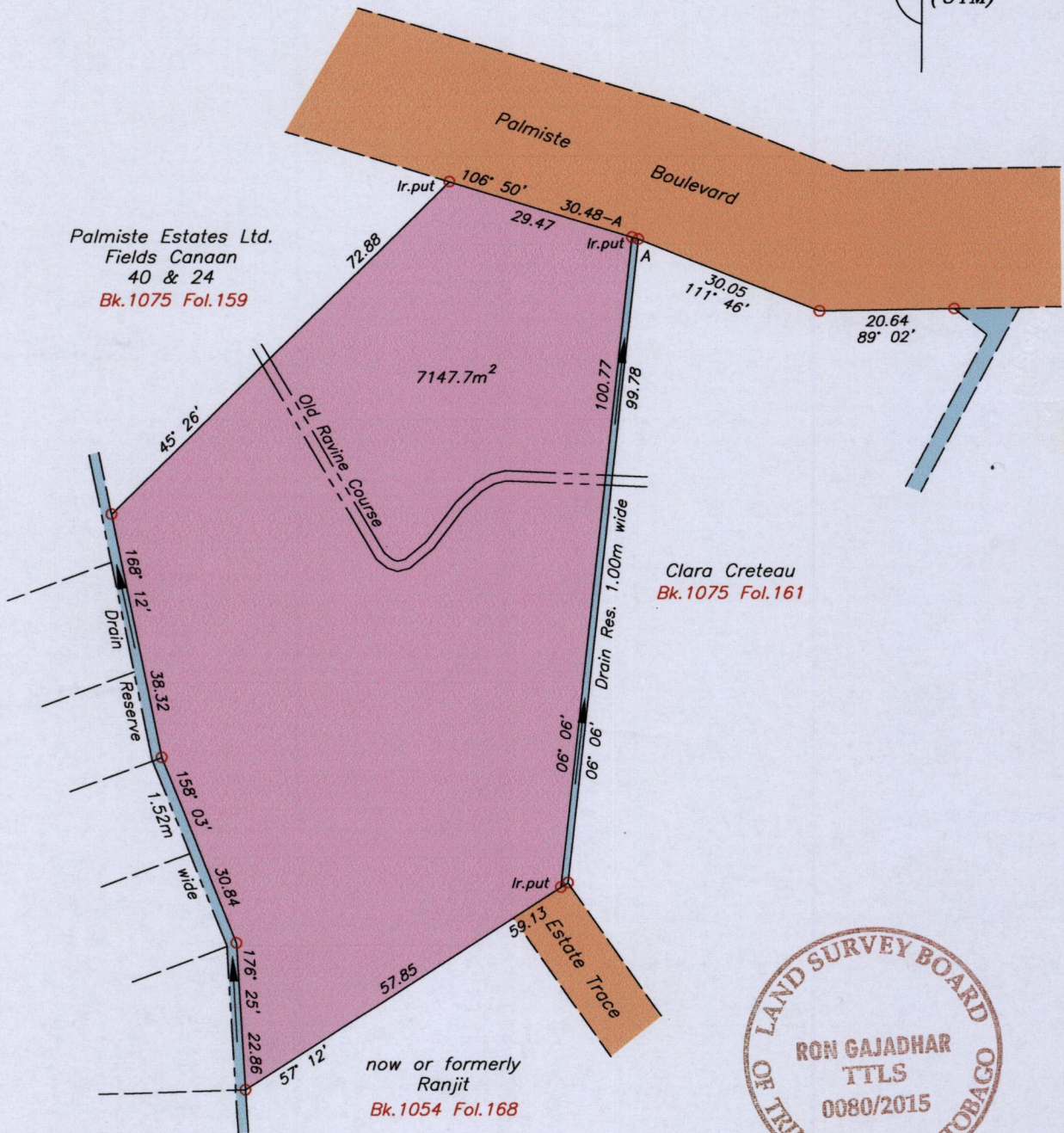
1558

14()

U.P.R.N.....  
Address - Palmiste Boulevard,  
Palmiste.

Ward of Naparima  
County of Victoria  
Cadastral Sheet G.B.A.  $\frac{63B}{2/b}$

Process IDA 109750



Note - UTM (Nap-Zone 20) Coordinates obtained from hand held GPS receiver  $\pm 5.00m$

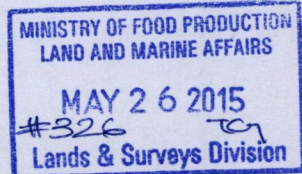
A = 667244 E (U.T.M)  
1133188 N (U.T.M)

Ref: - Bk.1075 Fol.160

SCALE 1:1000

Distances are in metres

- Denotes Iron found except stated otherwise  
Note: Bearings are grid U.T.M. based on solar observations



Plan of a Parcel of land coloured pink in the Ward of Naparima. Containing seven thousand and thirty two point eight square metres. Surveyed by me, with due authority, in May 2015 for Sheldon Stephen. Certified correct in accordance with Regulation 25(1) of the Land Surveyors' Regulations 1998.

Checked by.....

.....

Entered on.....

Trinidad & Tobago Land Surveyor..... 26.05.2015

L.S.