

1558

137

Process ID# 109739

Cadastral Sheet $\frac{53C}{4/c/2}$ G.3.0.

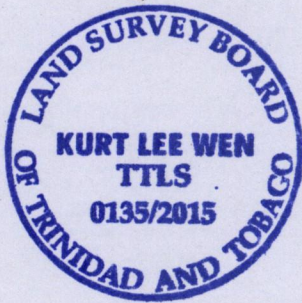
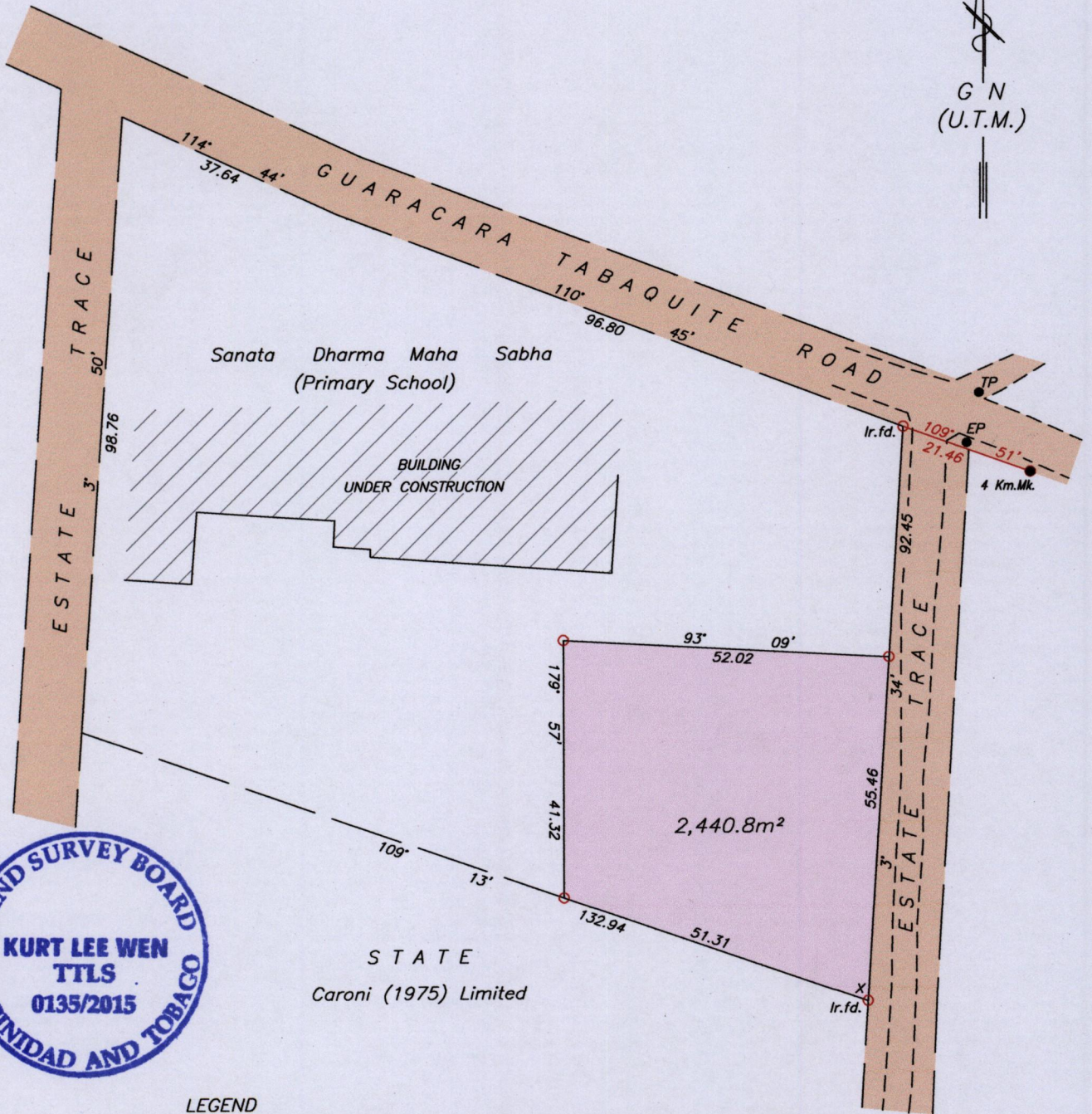
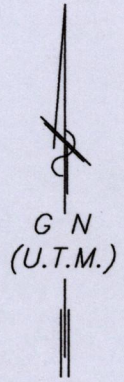
REFERENCE:

Bk.1263 Fol.36

Ward of Naparima

County of Victoria

REFORM



STATE
Caroni (1975) Limited

LEGEND

Km.Mk.	-	Kilometer Mark
● TP	-	Telephone Pole
● EP	-	Electricity Pole
---	-	Edge of Road

$X = N 1139772 \pm 5.0m$
 $E 672962$
 UTM 20 Naparima 1955 Datum
 Hand Held GPS

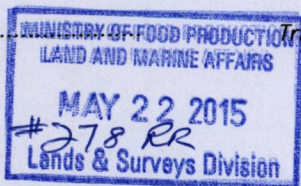
○ Denotes Iron put unless otherwise stated
 Bearings are U.T.M. Grid based on Solar observations

SCALE 1:1000
 Distances are in METRES

PLAN of a Parcel of land coloured pink in the Ward of Naparima
 Containing two thousand four hundred and forty point eight square metres
 Surveyed by me, with due authority, in March 2015 at the request of
 The Education Facilities Company Limited
 Certified correct in accordance with Regulation 25 (1) of the Land Surveyors Regulations 1998.

..... *Kurt Lee Wen* T.T.L.S.

Entered on *May 22* 20*15*



499