

1558

135

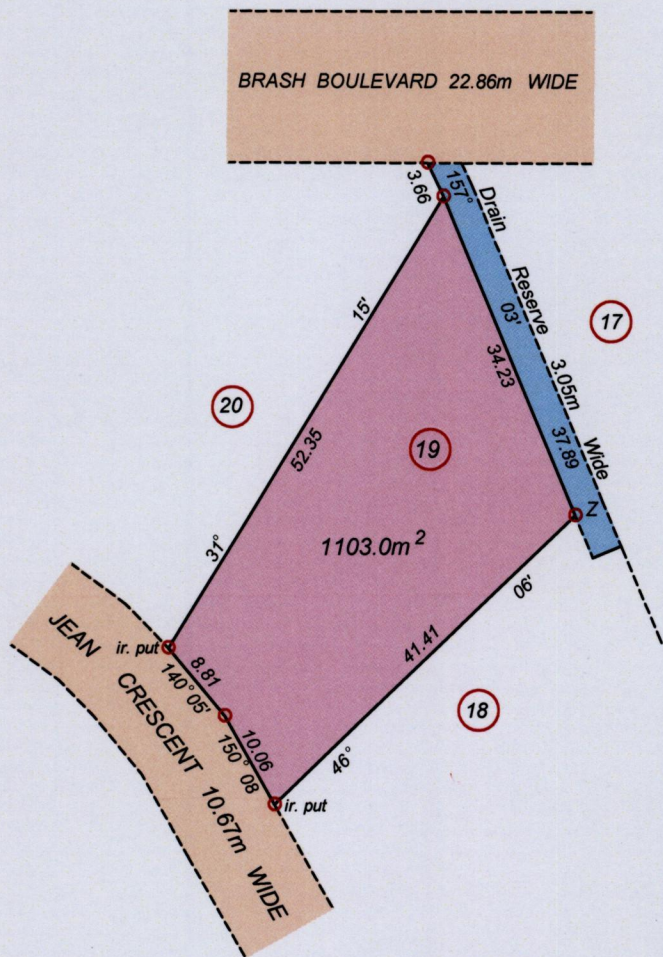
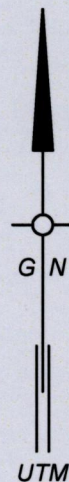
Cadastral Sheet G. 8. 63B
2/b

Ward of Naparima

County of Victoria

Vide Plan XE 75

Process SDH 109730



SCALE 1 : 750

Distances are in metres

Z - N1132801, E668252

Coordinates taken on hand held Garmin GPS Receiver Naparima +/- 5 metres point Z

- Denotes iron found except otherwise stated
- Bearings are UTM Grid based on Solar Observations

PLAN of a parcel of land coloured pink in the Ward of Naparima
Containing eleven hundred & three square metres
Surveyed by me, with due authority, in March 2015 for Roy Moodoo
Certified Correct in accordance with Regulation 25 (1) of the
Land Surveyors Regulations 1998.

Checked by Murchison Pierre

Entered on Trinidad & Tobago Land Surveyor 21st May, 2015 504

