

1558

133

63B

Cadastral Sheet 2/a

Ward of Naparima

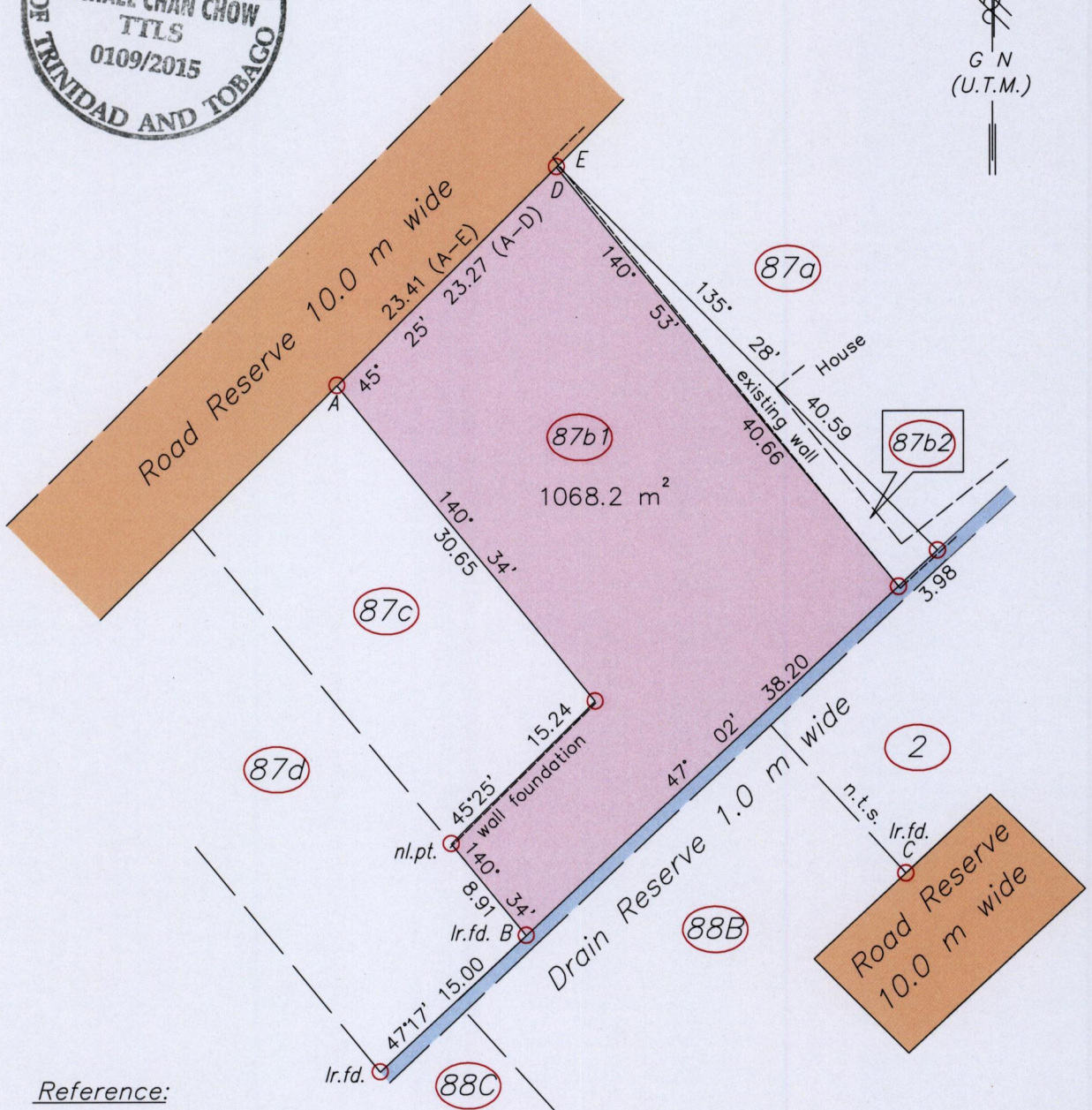
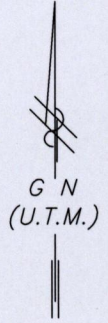
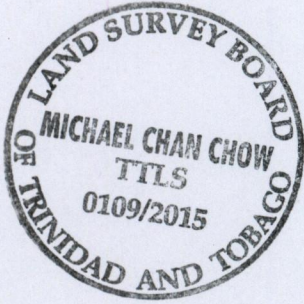
County of Victoria

Rambert Village

La Romain

AMMENDED SURVEY

Process ID# 109720



Reference:

Previous surveys by Ron Gajadhar in Feb 2012 & 2013
Previous surveys by Roopchand Deonanan in July 2011

----- wall

A = N 1132189 +/- 5.0m
E 666649 +/- 5.0m
U.T.M.20 (Naparima)
Handheld GPS

B TO C 100'04' 39.79

SCALE 1:500

Distances are in METRES

- Denotes Iron put unless otherwise stated
- Bearings are U.T.M. Grid based on solar observations

PLAN of a Parcel of land coloured pink in the Ward of Naparima
Containing one thousand and sixty eight point two square metres.
Surveyed by me, with due authority, in April 2015, at the request of R. Singh

Certified correct in accordance with Regulation 25 (1) of the Land Surveyors Regulations 1998.

Entered:

Michael Chan Chow T.T.L.S.

Entered on MAY 19 2015 # 231 Lands & Surveys Division

Trinidad & Tobago 19th May 2015 Land Surveyor

46P.