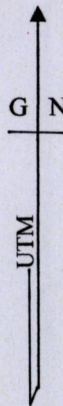


1558

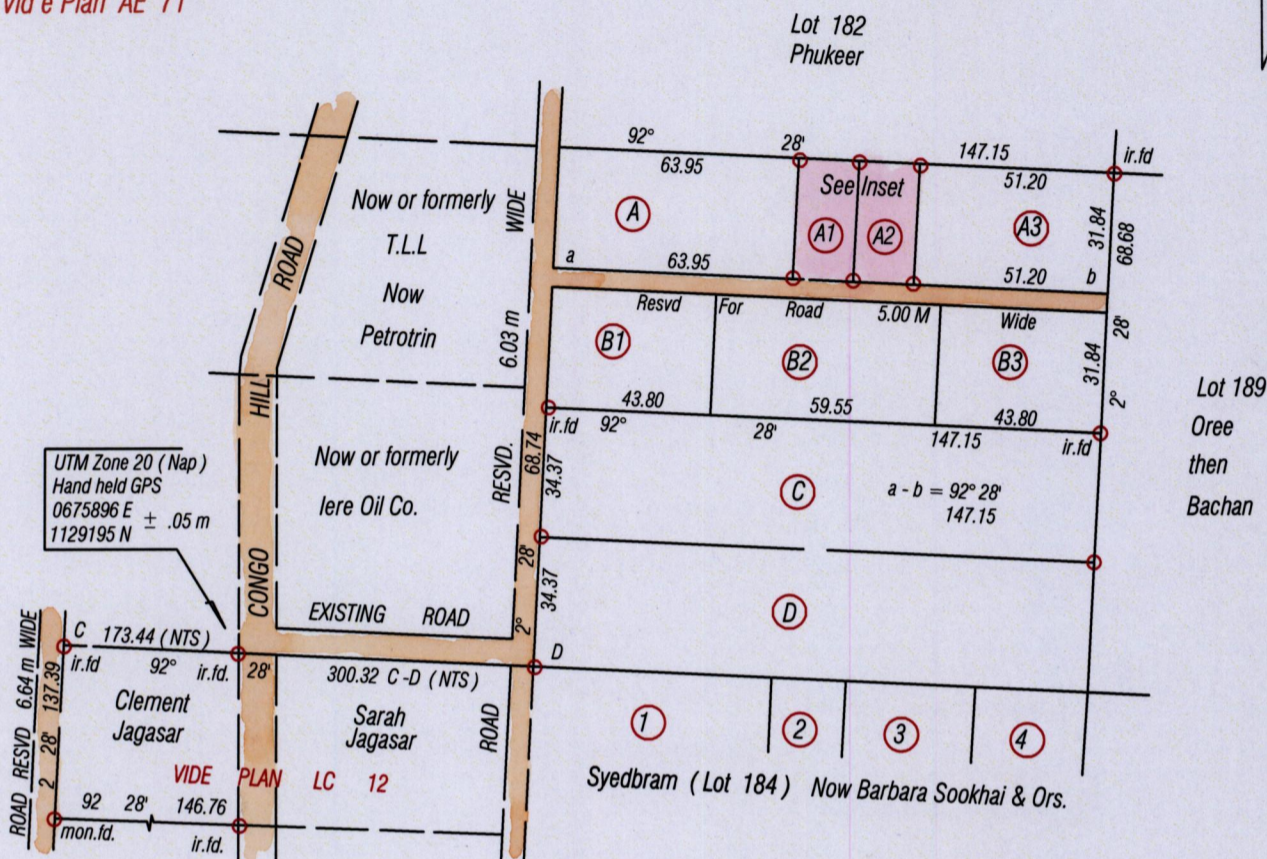
132

Cadastral Sheet (G 9 J) 64 A / 3/b  
County of Victoria  
Ward of Naparima

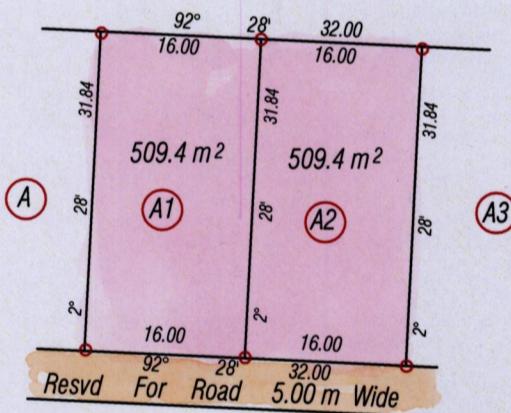


Process ID# 109715

Bk. 1021 Fol. 216  
Vid e Plan AE 71



UTM Zone 20 (Nap)  
Hand held GPS  
0675896 E ± .05 m  
1129195 N



Inset  
Scale = 1 / 750



Bearings are UTM Grid based on Solar Obs.  
○ Denotes iron put except otherwise stated

SCALE 1 / 2000  
Distances are in Metres

PLAN of 2 Parcels of land coloured pink in the Ward of Naparima  
Containing one thousand and eighteen point eight square metres  
Surveyed by me, with due authority, in April 2015 For David Samuel  
Certified Correct in accordance with Regulation 25 (1) of the Land Surveyors' Regulations 1998,

Checked by.....  
Entered on.....

*Winston Ramcharan*  
Trinidad & Tobago Land Surveyor... 18<sup>th</sup> May 2015

