

1558

125

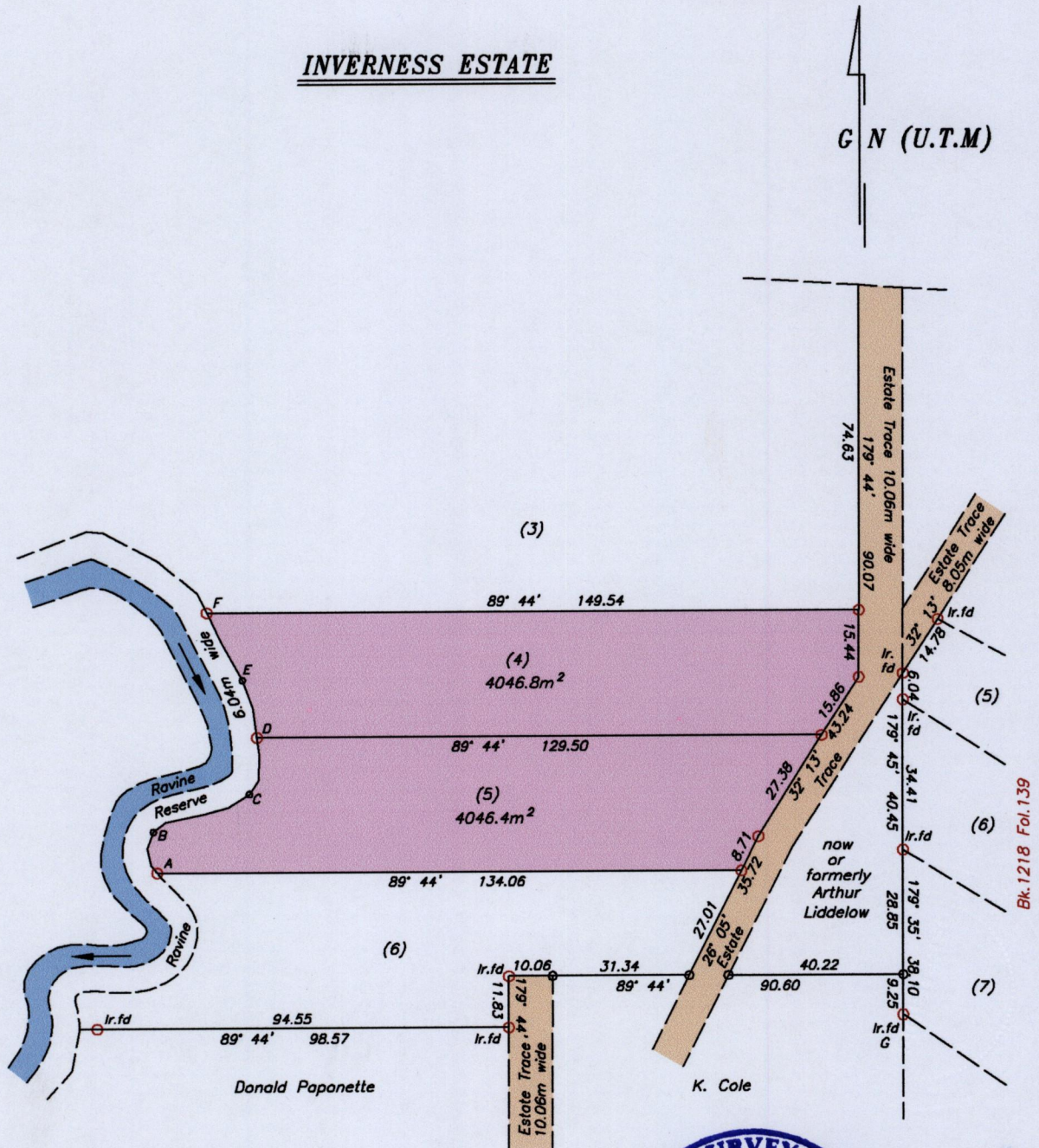
Process ID# 109694

Cadastral Sheet $\frac{64A}{1/b}$ (G.9.B)
Ward of Naparima
County of Victoria

Ref: DE 200800760831
Plan F.E.40

INVERNESS ESTATE

G N (U.T.M)



G = N 1132779
E 676644

A - B	355° 52'	9.35
B - C	68° 26'	23.66
C - D	07° 16'	13.09
D - E	345° 39'	13.61
E - F	332° 00'	17.64

Note: U.T.M 20 Naparima (GPS +/- 3.0m)

- Denotes Iron put unless otherwise stated
- Bearings are U.T.M Grid based on solar observations
- To obtain Cassini bearings add 18 minutes



SCALE 1:1500
Distances are in METRES

PLAN of 2 Parcels of land coloured pink in the Ward of Naparima.
Containing together eight thousand and ninety three point two square metres.
Surveyed by me, with due authority, in November 2013 at the request of Paul Ramlogan.
Certified Correct in accordance with Regulation 25 (1) of the Land Surveyors Regulations 1998.

Entered on..... Curtis Gokool

Trinidad and Tobago Land Surveyor..... May 04 2015

