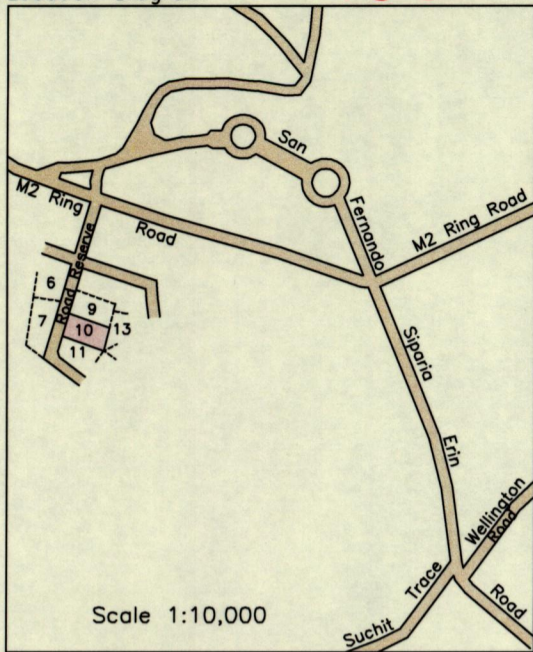


1558

1183

Location Diagram



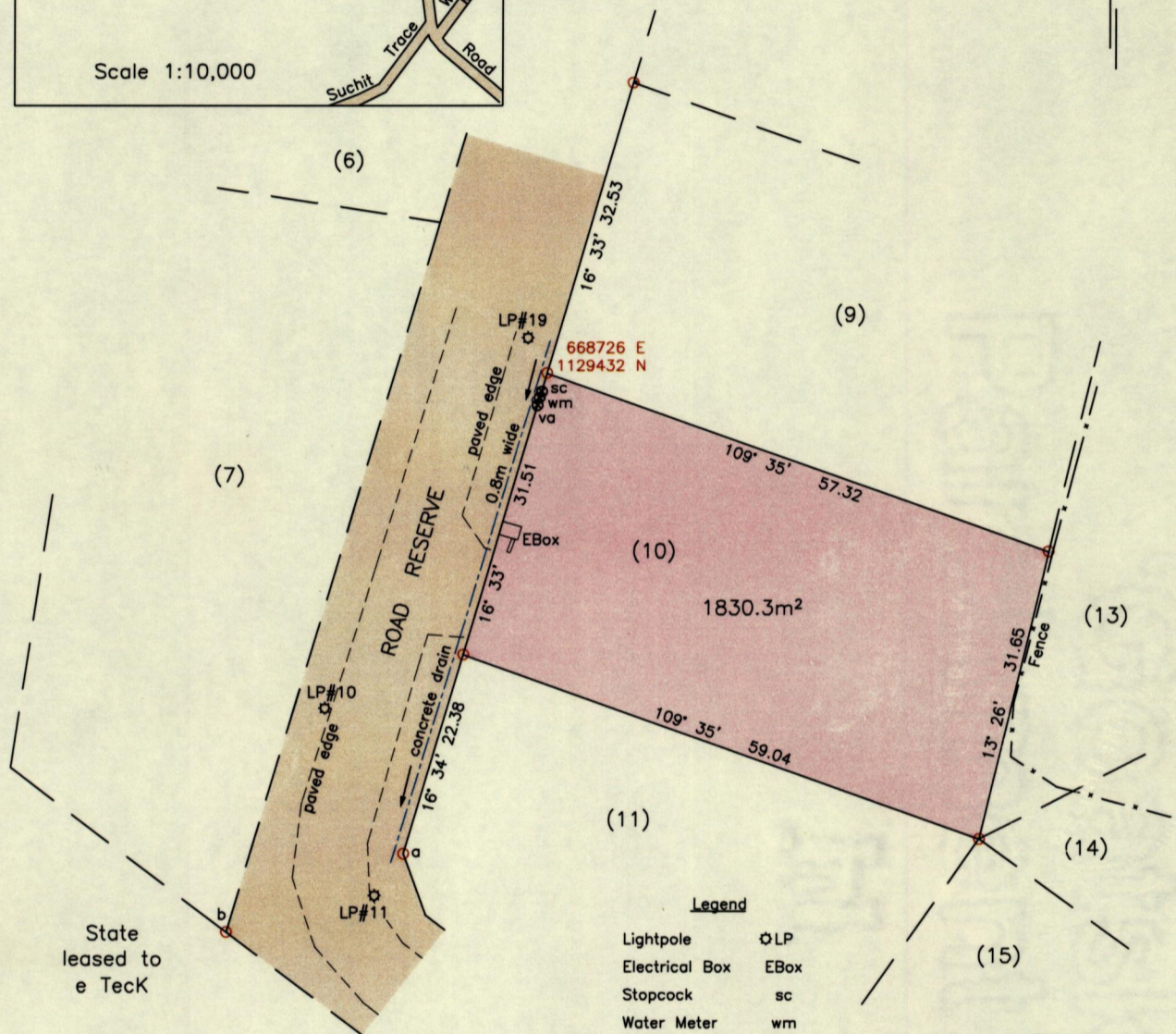
Scale 1:10,000

63B  
 Cadastral Sheet 4/b (G.8.N.)  
 Ward of Naparima  
 County of Victoria

Debe Industrial Park

Process ID# 109659

G N  
U.T.M.



Legend

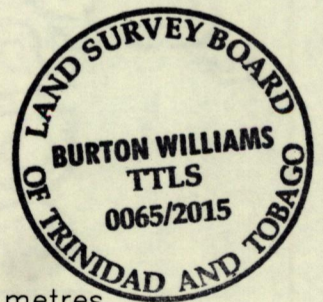
- Lightpole      ◯LP
- Electrical Box    EBox
- Stopcock        sc
- Water Meter     wm
- Valve            va

SCALE 1:750  
Distances are in metres

Reference:  
S.O. 27/2010

From	To	Bearing	Distance
b	a	66° 00'	20.75

- Notes: ◯ Denotes Ir.f.d. unless otherwise stated  
 Bearings are U.T.M. Grid based on Solar Observations  
 Previous survey by Winston Mohammed in May 2010  
 Coordinates obtained using handheld GPS (UTM Zone 20, Naparima ± 5.0m)



PLAN of a parcel of land coloured pink in the Ward of Naparima  
 Containing one thousand eight hundred and thirty point three square metres  
 Surveyed by me, with due authority, in April 2015 for Evolving Technologies and  
 Enterprise Development Co. Ltd. (e TeCK)  
 Certified Correct in accordance with Regulation 25(1) of the Land Surveyors Regulations 1998.

Checked by ..... *Burton Williams* .....

Entered on ..... and Tobago Land Surveyor, ..... 30/4/2015.

