

1558

114

R.P.O. Vol. 15 Fol. 539

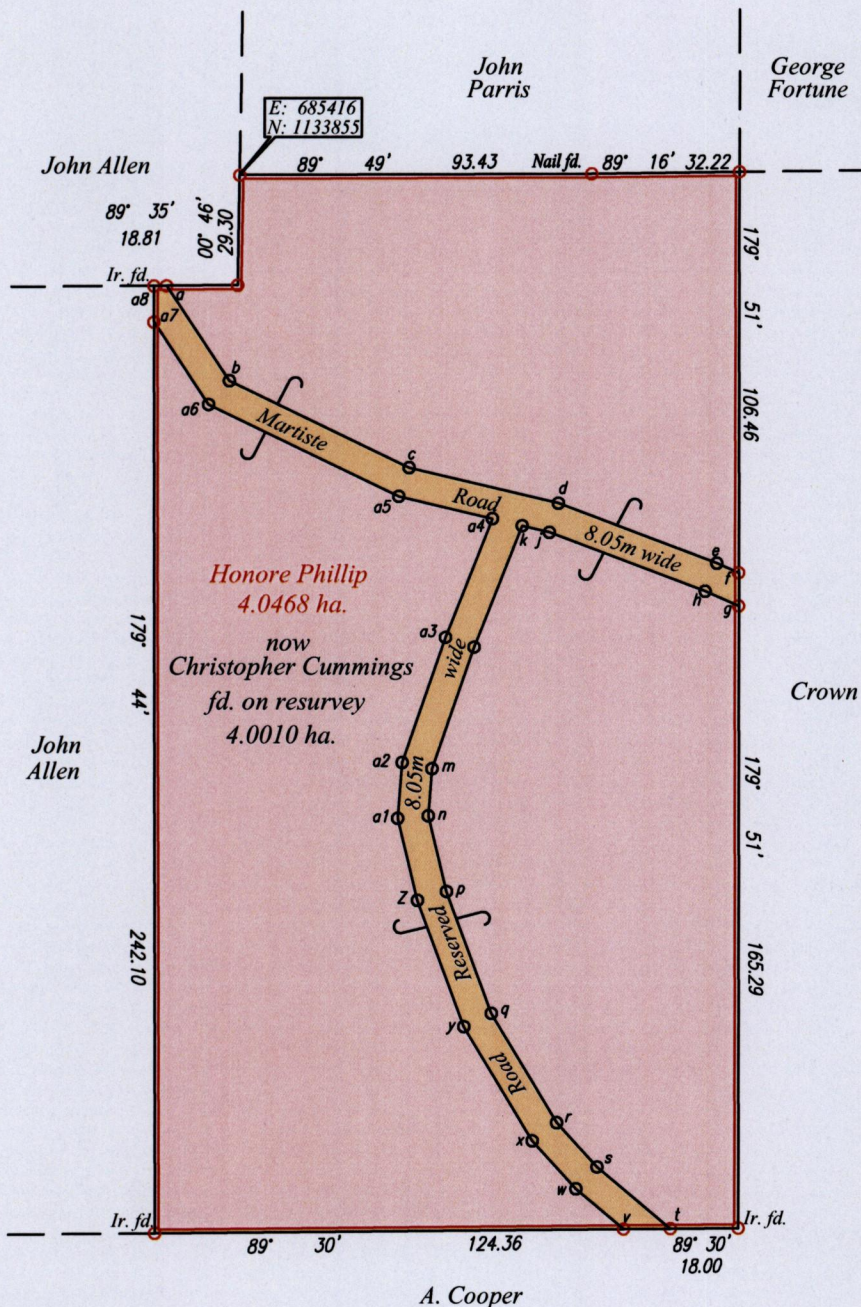
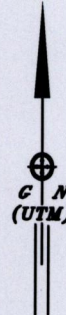
C.T. Vol. 4022 Fol. 243

Process SD # 109460

Ward of Ortoire

County of Victoria

Cadastral Sheet G.5.N. 54E/4/C



ROAD LEGEND		
LINE	BEARING	DISTANCE
a-b	146° 26'	30.24
b-c	115° 45'	52.98
c-d	103° 24'	40.80
d-e	110° 43'	45.02
e-f	113° 57'	6.44
f-g	179° 51'	8.82
g-h	113° 57'	9.82
h-j	110° 43'	44.28
j-k	103° 24'	7.45
k-l	21° 25'	34.82
l-m	18° 55'	33.94
m-n	184° 17'	12.55
n-p	166° 24'	20.73
p-q	159° 38'	34.55
q-r	148° 55'	33.88
r-s	137° 45'	16.00
s-t	129° 55'	25.55
t-v	89° 30'	12.42
v-w	129° 55'	16.65
w-x	137° 45'	17.33
x-y	148° 55'	35.42
y-z	159° 38'	35.78
z-a1	166° 24'	22.47
a1-a2	184° 17'	14.84
a2-a3	18° 55'	35.15
a3-a4	21° 25'	33.87
a4-a5	103° 24'	25.58
a5-a6	115° 45'	56.06
a6-a7	146° 26'	27.16
a7-a8	179° 44'	9.56
a8-a	89° 35'	3.35

Area of Road: 3149.7m²

Reference

Bk. 322 Fol. 54

SCALE:- 1:2000

Distances are in metres

Coordinate was obtained from Hand Held GPS.

Napariima Datum (+/-5m)

UTM Zone 20.

○ Denotes Iron put, except stated otherwise.

○ Denotes No Mark put.

Bearings are U.T.M. Grid based on Solar Observations

Plan of a Parcel of land coloured pink in the Ward of Ortoire.

Containing four point zero zero one zero hectares.

Surveyed by me, with due authority, in December, 2014.

Certified correct in accordance with Regulation 25(1) of the Land Surveyors' Regulations 1998.

Checked by.....

Melissa Nicole Rambaran

Entered on Trinidad & Tobago Land Surveyor..... 30th April 2015

