

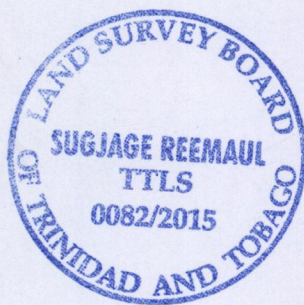
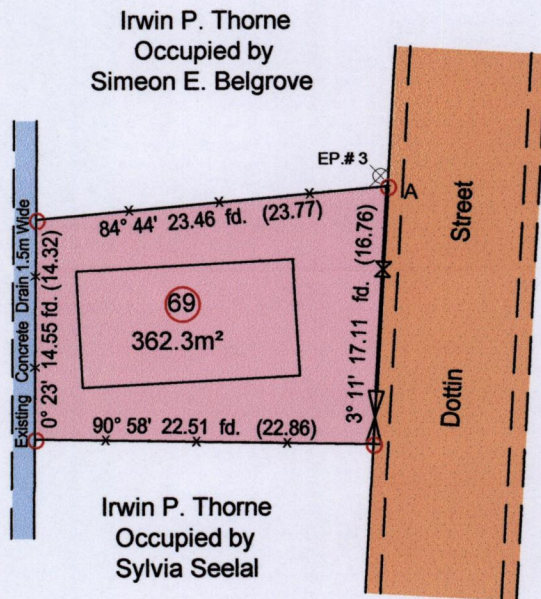
Process ID# 109359

Ward of Naparima

County of Victoria

Cadastral Sheet G.3.J, 53F
1/c

San Fernando



A = N 1136329
E 0669145

- ⊗ Electricity Pole
- — — Edge of Asphalt
- Block Wall
- x — Wire Fence

Note: U.T.M 20 Naparima (GPS +/- 5.0m)

○ Denotes Iron put except stated otherwise.

Note: Bearings are cassini grid based on solar observations

SCALE : 1:500

Distances are in metres

PLAN of a Parcel of land coloured pink in the Ward of Naparima
 Containing three hundred and sixty two point three square metres
 Surveyed by me, with due authority, in April 2015 for Saran Kissoondan
 Certified correct in accordance with Regulation 25 (1) of the Land Surveyors Regulations 1998.

..... Sugjage Reemau

Entered on

Trinidad & Tobago Land Surveyor

