

1558

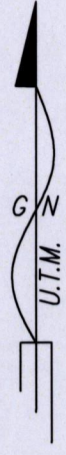
1013

Process ID# 109344

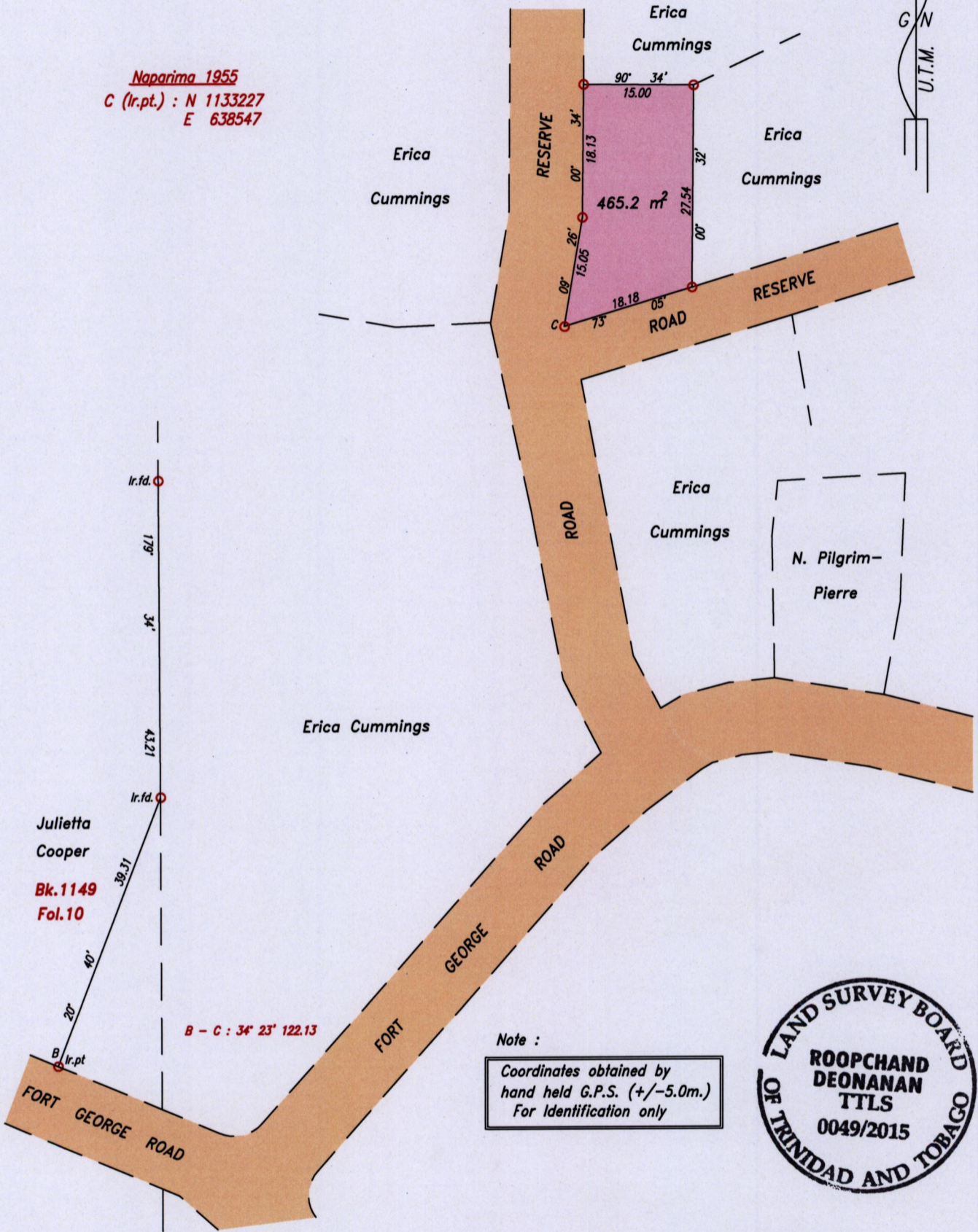
Cadastral Sheet G.10.A. 64B
1/b

Ward of Ortoire
County of Victoria

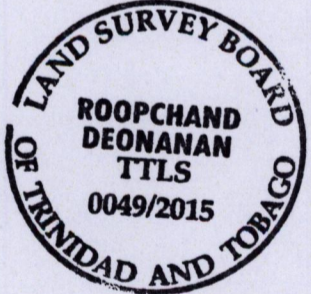
FORT GEORGE ROAD
PRINCES TOWN



Naparima 1955
C (Ir.pt.) : N 1133227
E 638547



Note :
Coordinates obtained by
hand held G.P.S. (+/-5.0m.)
For identification only



SCALE 1:750
Distances are in metres

○ Denotes Iron put except where otherwise stated
Bearings are U.T.M. Grid based on Solar Observations
PLAN of a Parcel of land coloured pink in the Ward of Ortoire
Containing four hundred and sixty five point two square metres
Surveyed by me, with due authority, in April 2015 for Erica Cummings
Certified Correct in accordance with Regulation 25 (1) of the Land Surveyors' Regulations 1998,

Checked by
Entered on
Trinidad & Tobago Land Surveyor. 20th April 2015.
FILE PATH = ADA004 D:\DEO\E.CUMMINGS DWG

