

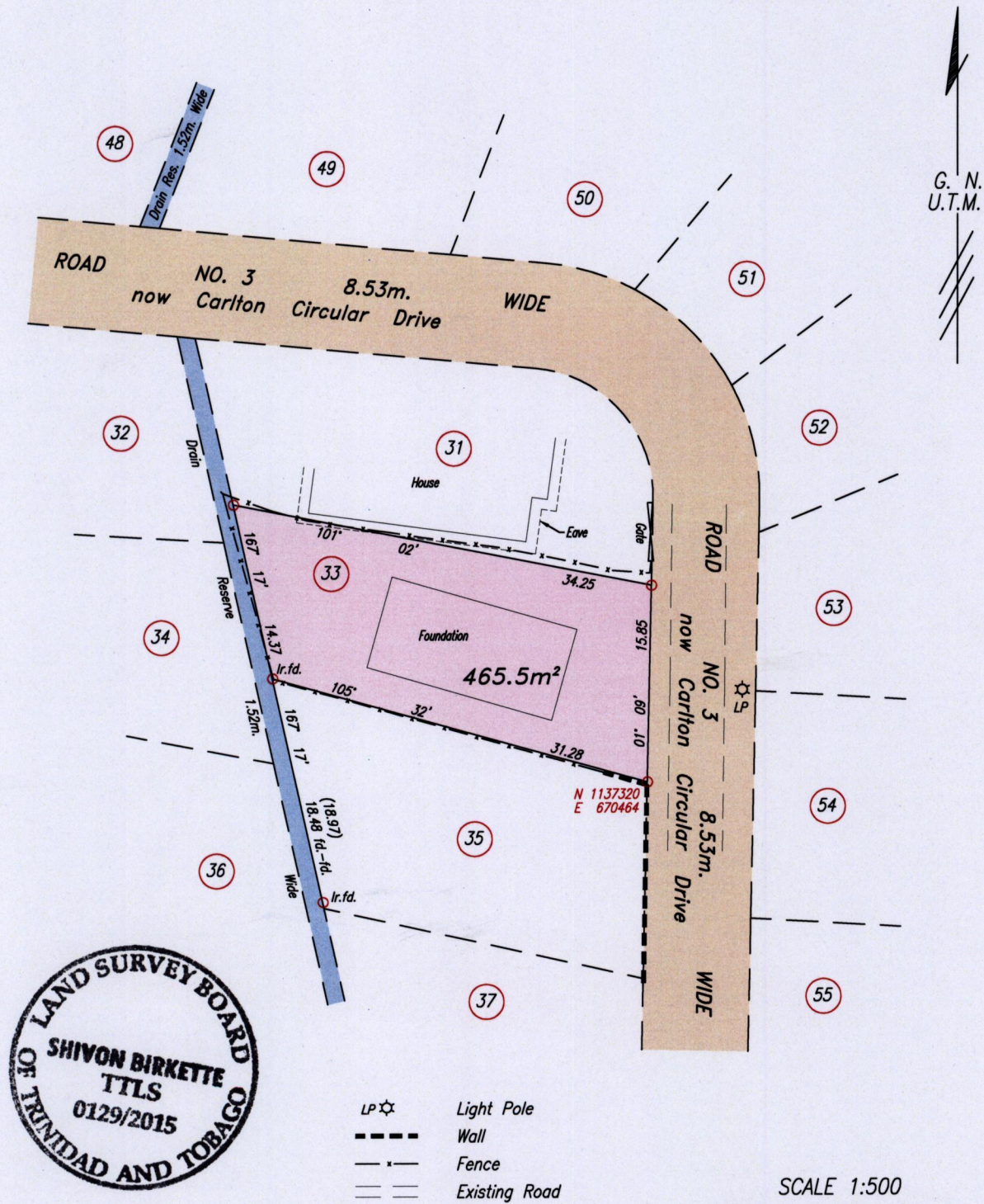
Vide : Bk.1212 Fol.102  
Bk.1212 Fol.103  
Bk.1212 Fol.104

REDEFINITION PLAN

Cadastral Sheet G.3.K. 53F  
Ward of Naparima 1/d/1  
County of Victoria

Process J<sub>2</sub># 109340

COCOYEA VILLAGE,  
SAN FERNANDO.



- LP ☆ Light Pole
- Wall
- x - Fence
- == Existing Road

SCALE 1:500

Distances are in metres

○ Denotes Iron put except otherwise stated.  
 Co-ordinates are Naparima/UTM, derived using handheld GPS (+/-5m)  
 Bearings are U.T.M. grid based on Solar Observations  
 PLAN of a Parcel of land coloured pink in the Ward of Naparima  
 Containing four hundred and sixty five point five square metres  
 Redefined by me, with due authority, on 26th March 2015 at the request of Beverly Williams  
 Certified Correct in accordance with Regulation 25 (1) of the Land Surveyors Regulations 1998

Checked by . . . . . *Shivon Birkette* . . . . .

Entered on . . . . . Trinidad & Tobago Land Surveyor. . . . . 14th April 2015.

FILE PATH = ADA002 D:\SHIVON BIRKETTE\BEVERLY WILLIAMS\_CADASTRAL.DWG.

