

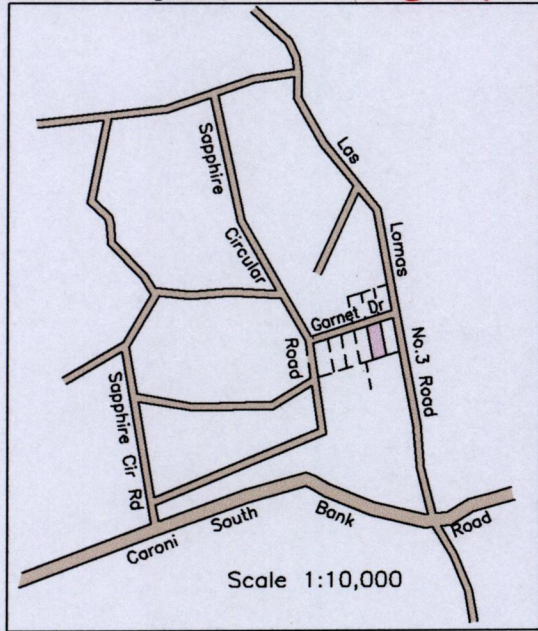
1557

24F

Cadastral Sheet 3/b (D.4.D)  
Ward of San Rafael  
County of St. George

98

Location Diagram



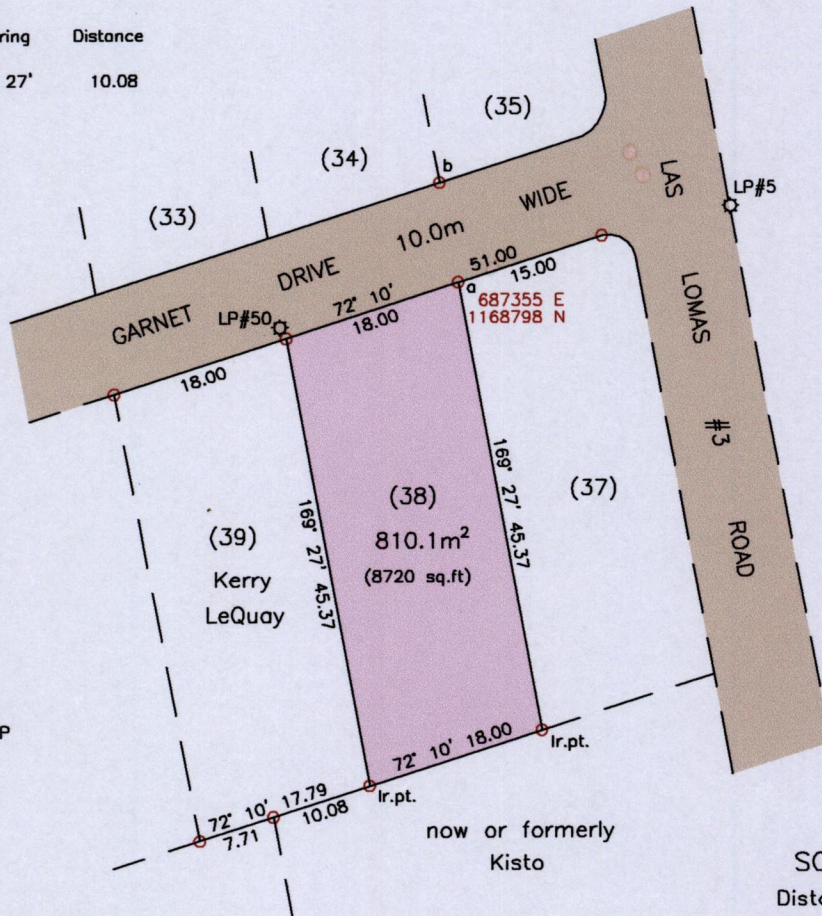
Las Lomas #3

La Esmeralda Gardens (North)

Process ID# 110003

G N  
U.T.M.

From	To	Bearing	Distance
a	b	349° 27'	10.08

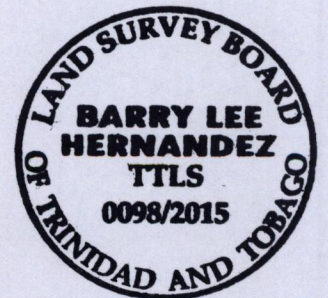


Legend  
Lightpole    ◯ LP

SCALE 1:750  
Distances are in metres

Reference: Deed# 9976/1996

Notes: ◯ Denotes Ir.f.d. unless otherwise stated  
Bearings are U.T.M. Grid based on Solar Observations  
Previous survey by Ivan Laughlin in September 1987 for Sou Sou Lands Ltd.  
Coordinates obtained by handheld GPS (UTM Zone 20, Naparima ± 5.0m)



PLAN of a parcel of land coloured pink in the Ward of San Rafael  
Containing eight hundred and ten point one square metres  
Surveyed by me, with due authority, in May 2015 for Ngozi Mewe-Pira  
Certified correct in accordance with regulation 25(1) of the Land Surveyors Regulations 1998.

Checked by .....  
Entered on .....

Trinidad and Tobago Land Surveyor, *Barry Lee Hernandez*, 29<sup>th</sup> May 2015

