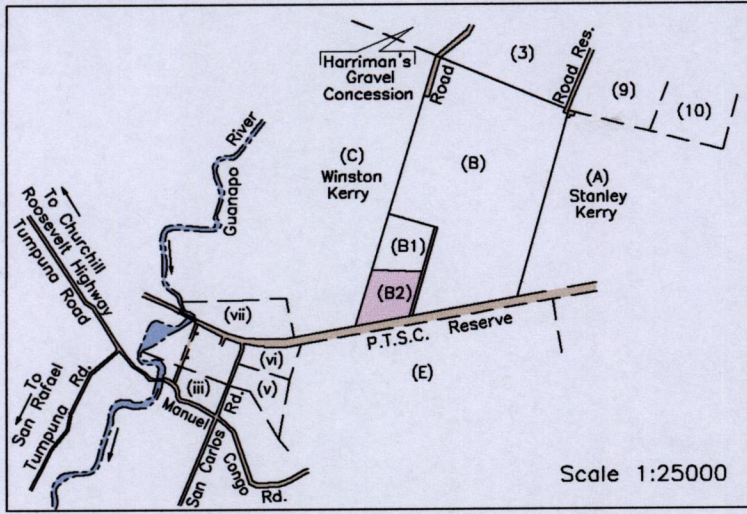


1557

24F (33)

Location Diagram

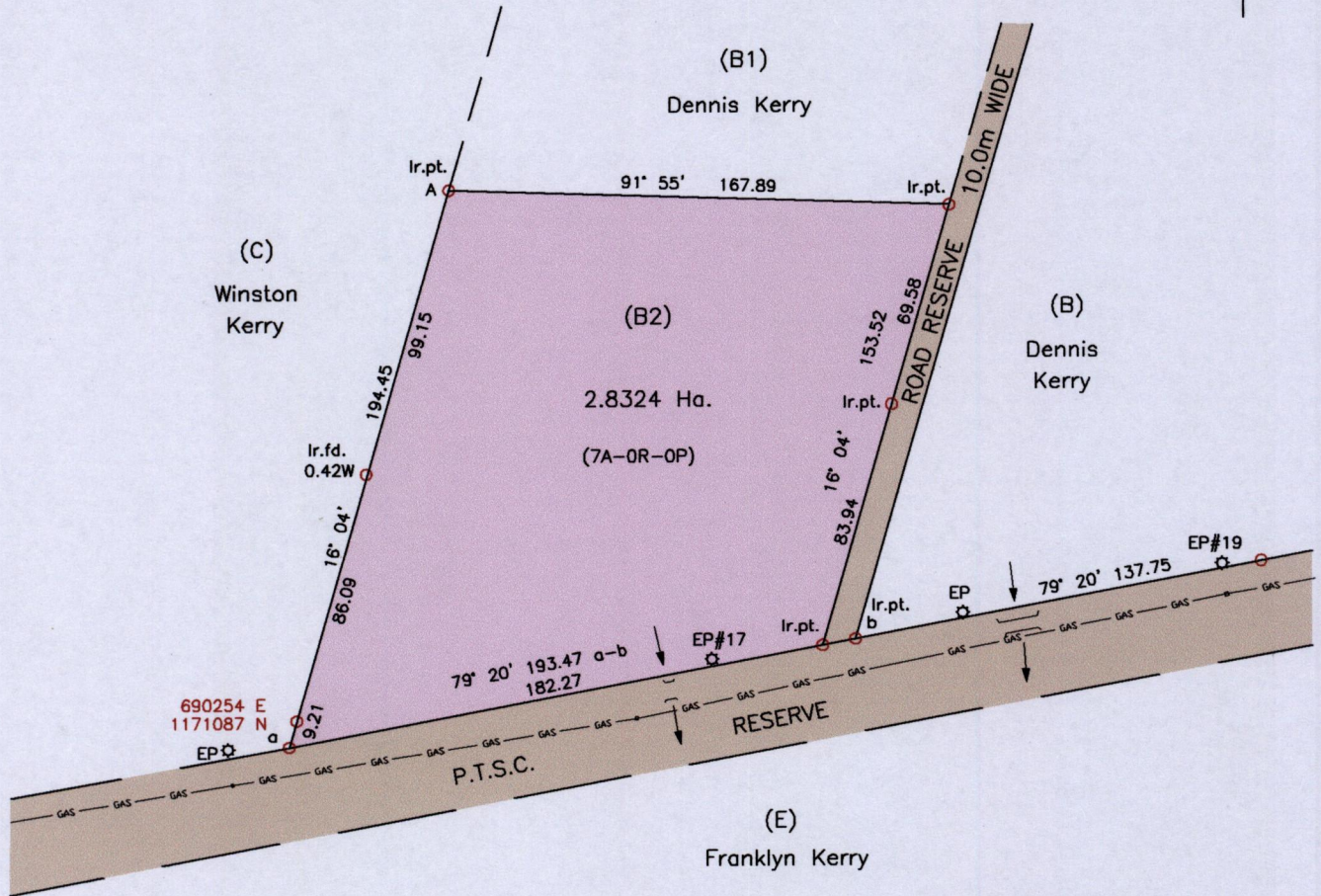


Cadastral Sheet 2/b (B.25.P.)
Borough of Arima
County of St. George

Manuel Congo,
off Tumpuna Rd. Arima

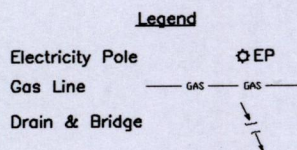
Process ID#109956

G N
U.T.M.

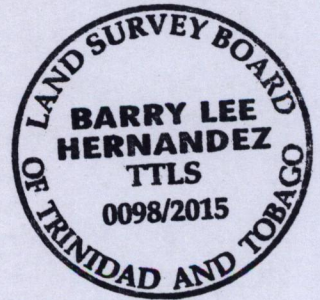


SCALE 1:2500
Distances are in metres

References:
PLAN A.N.169
PLAN C.N.107
Bk.1180 Fol.101
DE199710929057
PLAN P.G.96



Notes: Denotes Ir.f.d. unless otherwise stated
Bearings are U.T.M. Grid based on Solar Observations
Coordinates obtained by handheld GPS (UTM Zone 20, Naparima ± 5.0m)



PLAN of a parcel of land coloured pink in the Borough of Arima
Containing two point eight three two four hectares
Surveyed by me, with due authority, in May 2015 for Fizam Hosein
Certified Correct in accordance with Regulation 25(1) of the Land Surveyors Regulations 1998.

Checked by
Entered on

Barry Hernandez
Trinidad and Tobago Land Surveyor, 28th May 2015.

