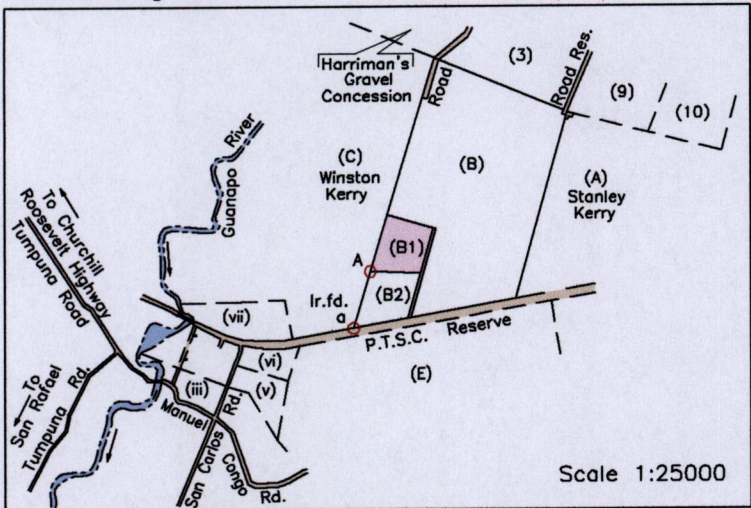


1557

24F (33)

Location Diagram



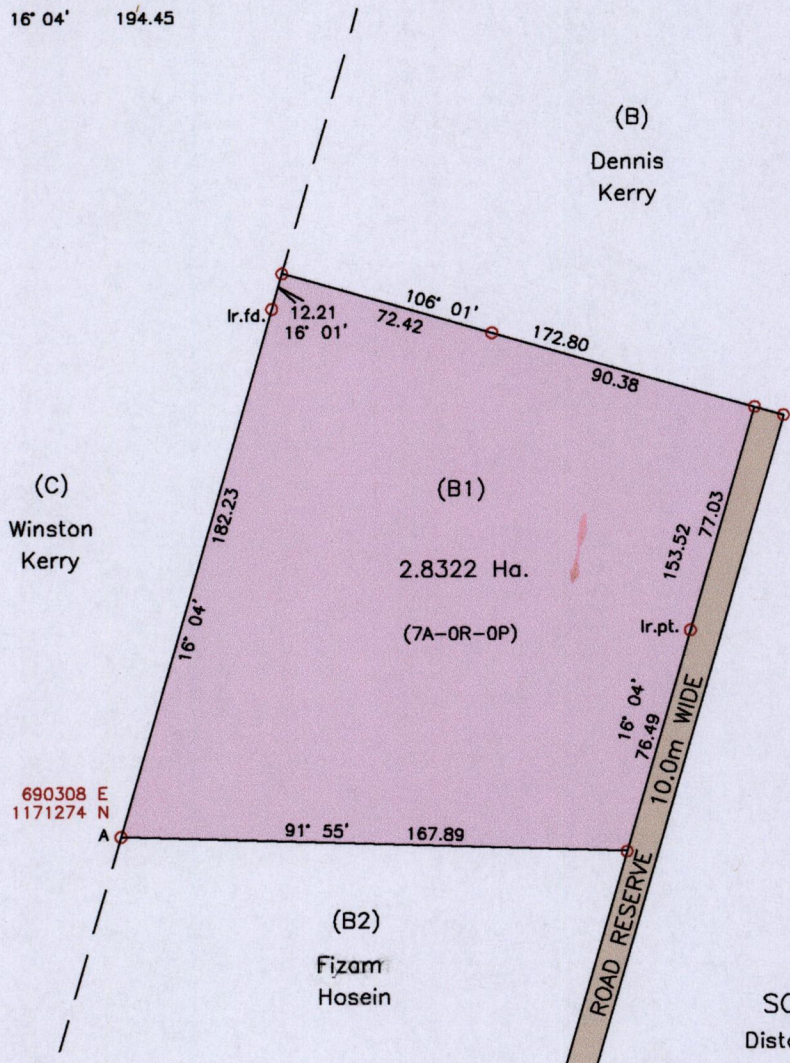
Cadastral Sheet 2/b (B.25.P.)  
Borough of Arima  
County of St. George

Manuel Congo  
off Tumpuna Rd. Arima

Process #109953

G N  
U.T.M.

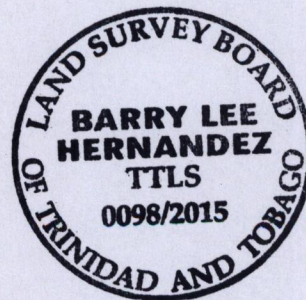
From	To	Bearing	Distance
a	A	16° 04'	194.45



References:  
PLAN A.N.169  
PLAN C.N.107  
Bk.1180 Fol.101  
DE199710929057  
PLAN P.G.96

Notes: ○ Denotes Ir.pt. unless otherwise stated  
Bearings are U.T.M. Grid based on Solar Observations  
Coordinates obtained by handheld GPS (UTM Zone 20, Naparima ± 5.0m)

SCALE 1:2500  
Distances are in metres



PLAN of a parcel of land coloured pink in the Borough of Arima  
Containing two point eight three two two hectares  
Surveyed by me, with due authority, in May 2015 for Dennis Kerry  
Certified Correct in accordance with Regulation 25(1) of the Land Surveyors Regulations 1998.

Checked by .....  
Entered on .....

*Barry Lee Hernandez*  
Trinidad and Tobago Land Surveyor, 28<sup>th</sup> May 2015.

