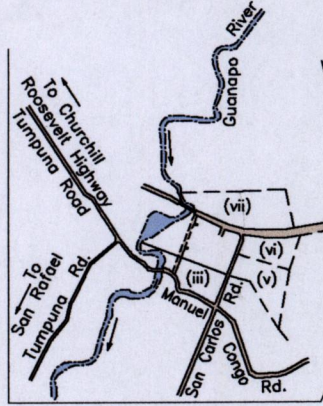


1557

24F 837

Location Diagram  
Scale 1:25000



Cadastral Sheet 2/b (B.25.P.)  
Borough of Arima  
County of St. George

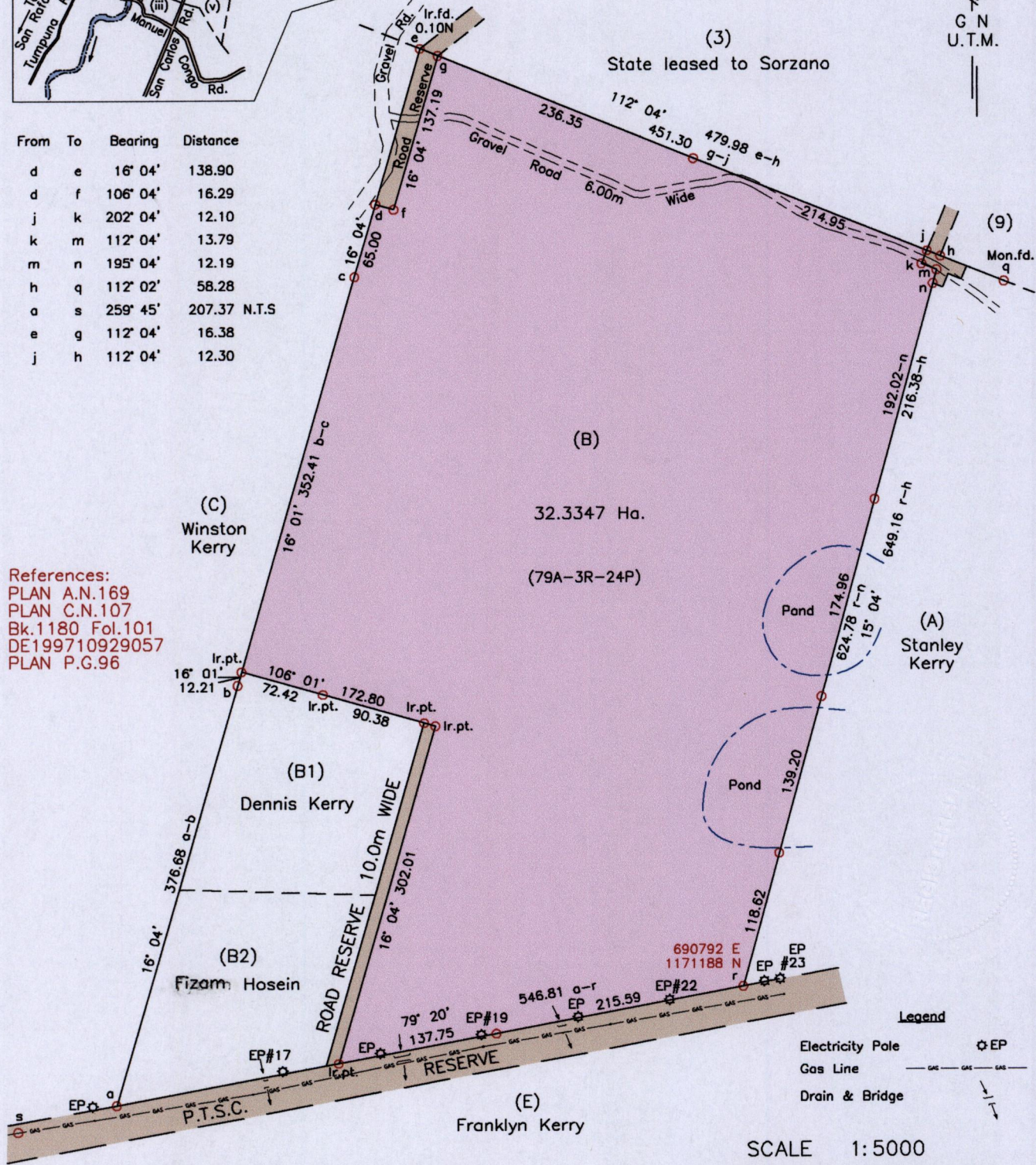
Manuel Congo,  
off Tumpuna Rd. Arima

Process 52H 109894

G N  
U.T.M.

From	To	Bearing	Distance
d	e	16° 04'	138.90
d	f	106° 04'	16.29
j	k	202° 04'	12.10
k	m	112° 04'	13.79
m	n	195° 04'	12.19
h	q	112° 02'	58.28
a	s	259° 45'	207.37 N.T.S
e	g	112° 04'	16.38
j	h	112° 04'	12.30

References:  
PLAN A.N.169  
PLAN C.N.107  
Bk.1180 Fol.101  
DE199710929057  
PLAN P.G.96



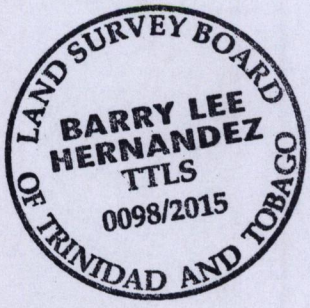
Legend

Electricity Pole	⊗ EP
Gas Line	— GAS — GAS — GAS —
Drain & Bridge	— / —

SCALE 1:5000  
Distances are in metres

Notes: ○ Denotes Ir.f.d. unless otherwise stated  
Bearings are U.T.M. Grid based on Solar Observations  
Coordinates obtained by handheld GPS (UTM Zone 20, Naparima ± 5.0m)

PLAN of a parcel of land coloured pink in the Borough of Arima  
Containing thirty two point three four seven hectares  
Surveyed by me, with due authority, in May 2015 for Dennis Kerry  
Certified Correct in accordance with Regulation 25(1) of the Land Surveyors Regulations 1998.



Checked by .....  
Entered on .....  
Trinidad and Tobago Land Surveyor, ..... 28<sup>th</sup> May ..... 2015.

MINISTRY OF FOOD PRODUCTION  
LAND AND MARINE AFFAIRS  
MAY 28 2015  
# 335 Am  
Lands & Surveys Division