

1557

79

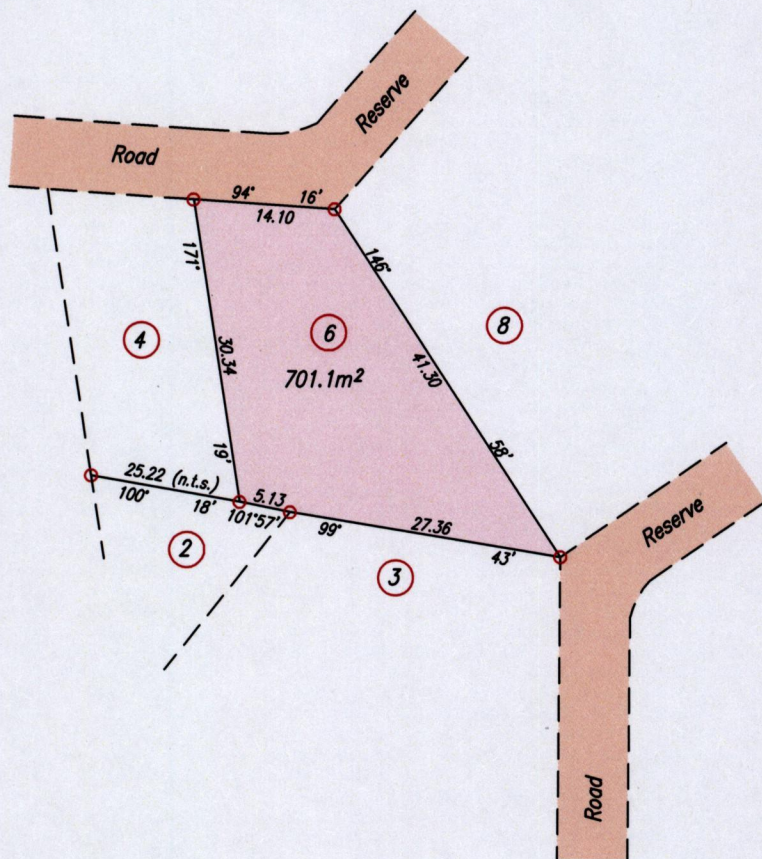
U.R.P.N. . . . .

Process ID#109863

Cadastral Sheet D.4.D.  $\frac{24F}{3/a}$

Ward of St. Rafael  
County of St. George

LA ESMERALDA - NORTH WEST



Point A

Co-ordinates obtained by Hand Held G.P.S. (Nap. Datum Zone 20)

Accuracy  $\pm$  3m

E 686102m

N 1168703m

Note: To obtain Cassini bearing + 18 minutes

○ Denotes Iron found except otherwise stated

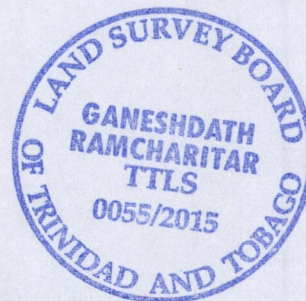
Bearings are U.T.M. Grid based on Solar Observations

Plan of a Parcel of land coloured pink in the Ward of St. Rafael

Containing seven hundred and one point one square metres

Surveyed by me, with due authority, on 8th May 2015 at the request of Roger Simon

Certified Correct in accordance with Regulation 25 (1) of the Land Surveyors' Regulations 1998



SCALE 1/750

Distances are in metres

*Ganeshdath Ramcharit*

Entered on . . . . . Trinidad & Tobago Land Surveyor

15/5 . . . . . 2015

