

See PLAN P.E.79  
PLAN R.H.151

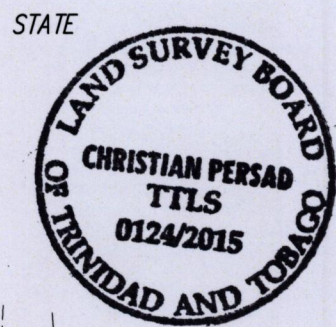
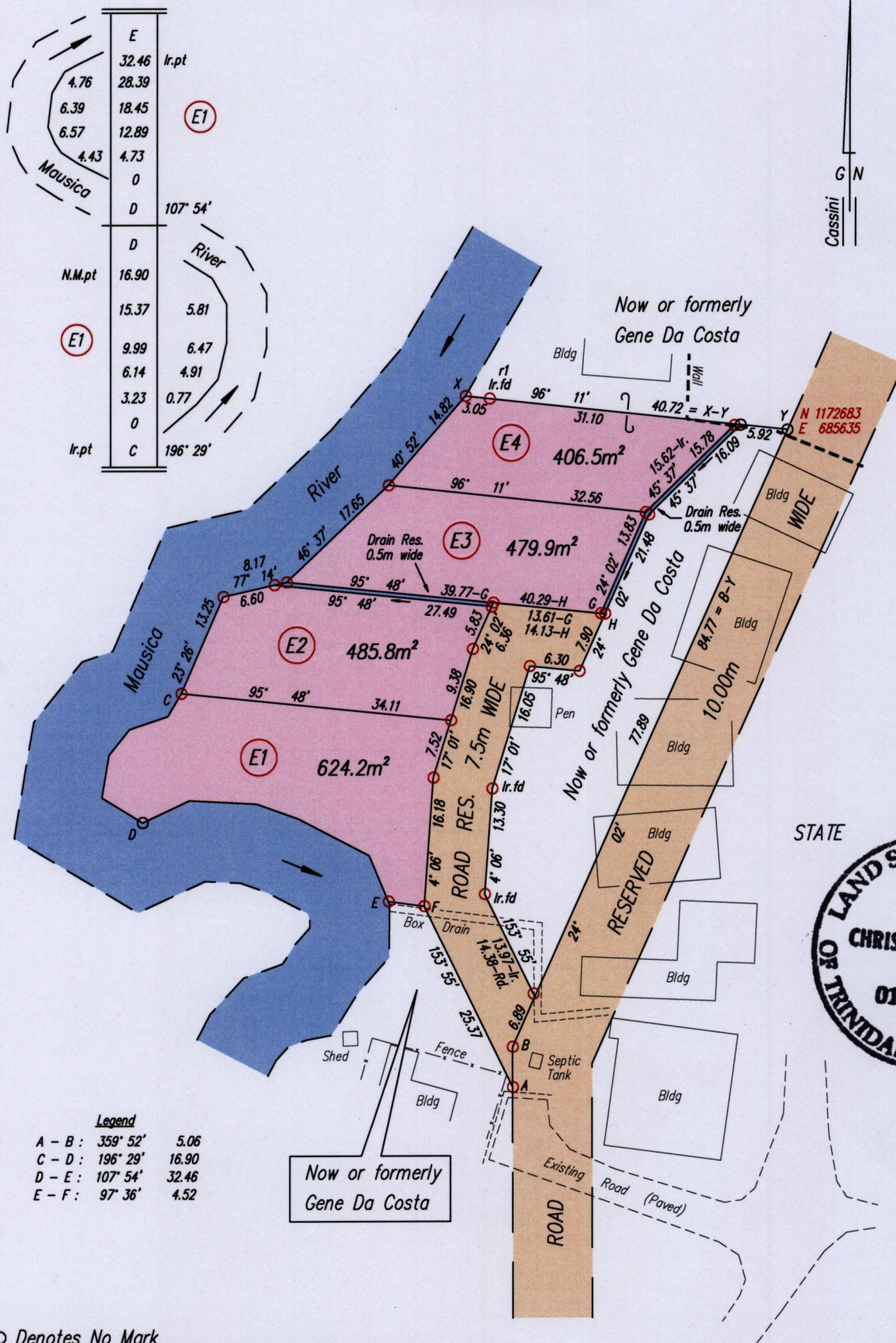
Cadastral Sheet  $\frac{24B}{4/d}$  &  $\frac{24C}{3/c}$  (B.24.K)

Borough of Arima

County of St. George

Process ~~322~~ 109849

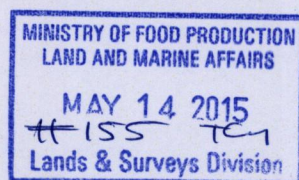
Racecourse Road, Carapo



○ Denotes No Mark  
 ○ Denotes Iron Put except where stated otherwise  
 Bearings are Cassini Grid based on Solar Observations  
 Co-ordinates are Naparima 1955/UTM, derived using Handheld GPS (+/-3m)

SCALE 1:750  
 Distances are in metres

PLAN of 4 parcels of land coloured pink in the Borough of Arima  
 Containing together one thousand nine hundred and ninety six point four square metres  
 Surveyed by me, with due authority, on May 11th, 2015 at the request of Gene Da Costa  
 Certified correct in accordance with Regulation 25 (1) of the Land Surveyors Regulations 1998



Checked by .....

Entered on .....

*Christian Persad*  
 Trinidad & Tobago Land Surveyor. .... 13/05/2015.