

1557

68

Process ID# 109735

Cadastral Sheet B.24.J 24E

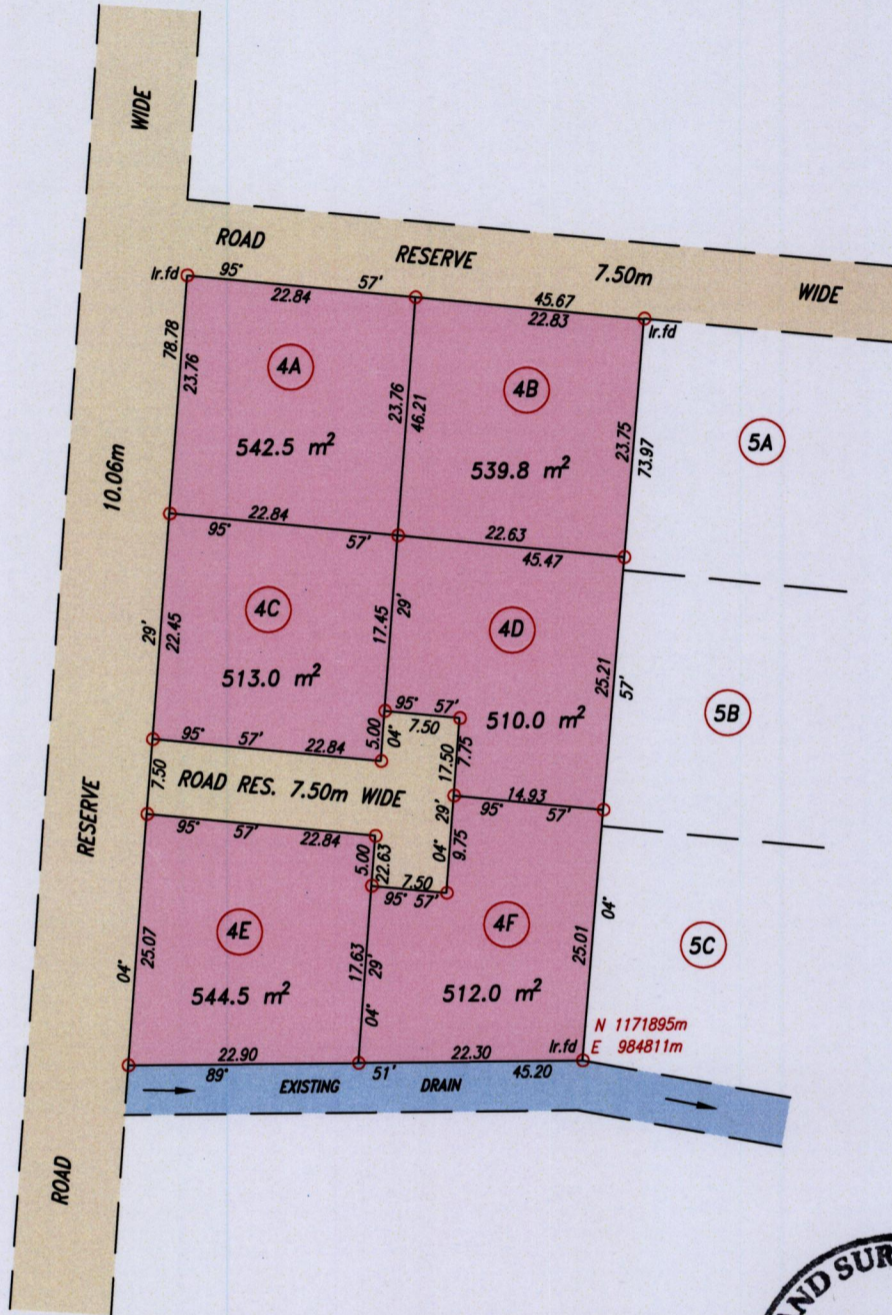
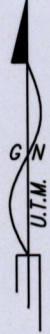
Ward of Arima

2/b

County of St. George

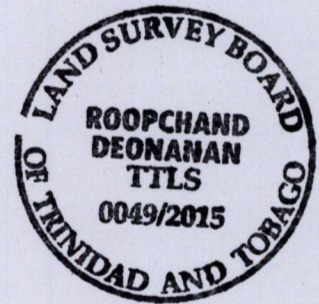
MAUSICA

PART OF PARCEL "F"



Note :

Coordinates obtained by
hand held G.P.S. (+/-5.0m.)
For identification only



SCALE 1:750

Distances are in metres

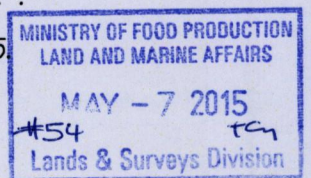
○ Denotes Iron put except where otherwise stated
Bearings are U.T.M. Grid based on Solar Observations
PLAN of 6 Parcels of land coloured pink in the Ward of Arima
Containing together three thousand one hundred and sixty one point eight square metres
Surveyed by me, with due authority, in March 2015 for R. St. Hill
Certified Correct in accordance with Regulation 25 (1) of the Land Surveyors' Regulations 1998,

Checked by

R. Deonanan

Entered on

Trinidad & Tobago Land Surveyor. 6th May 2015
PATH = ADA004 D:/DEO/RADICA ST.HILL LOT 4 DWG



4GP + 6LP