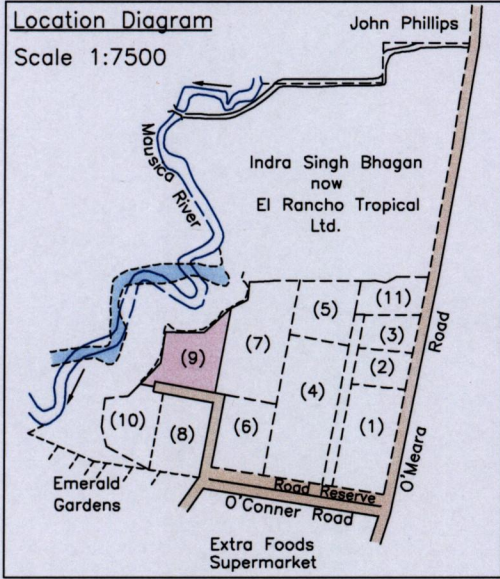


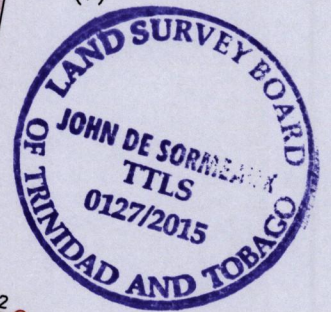
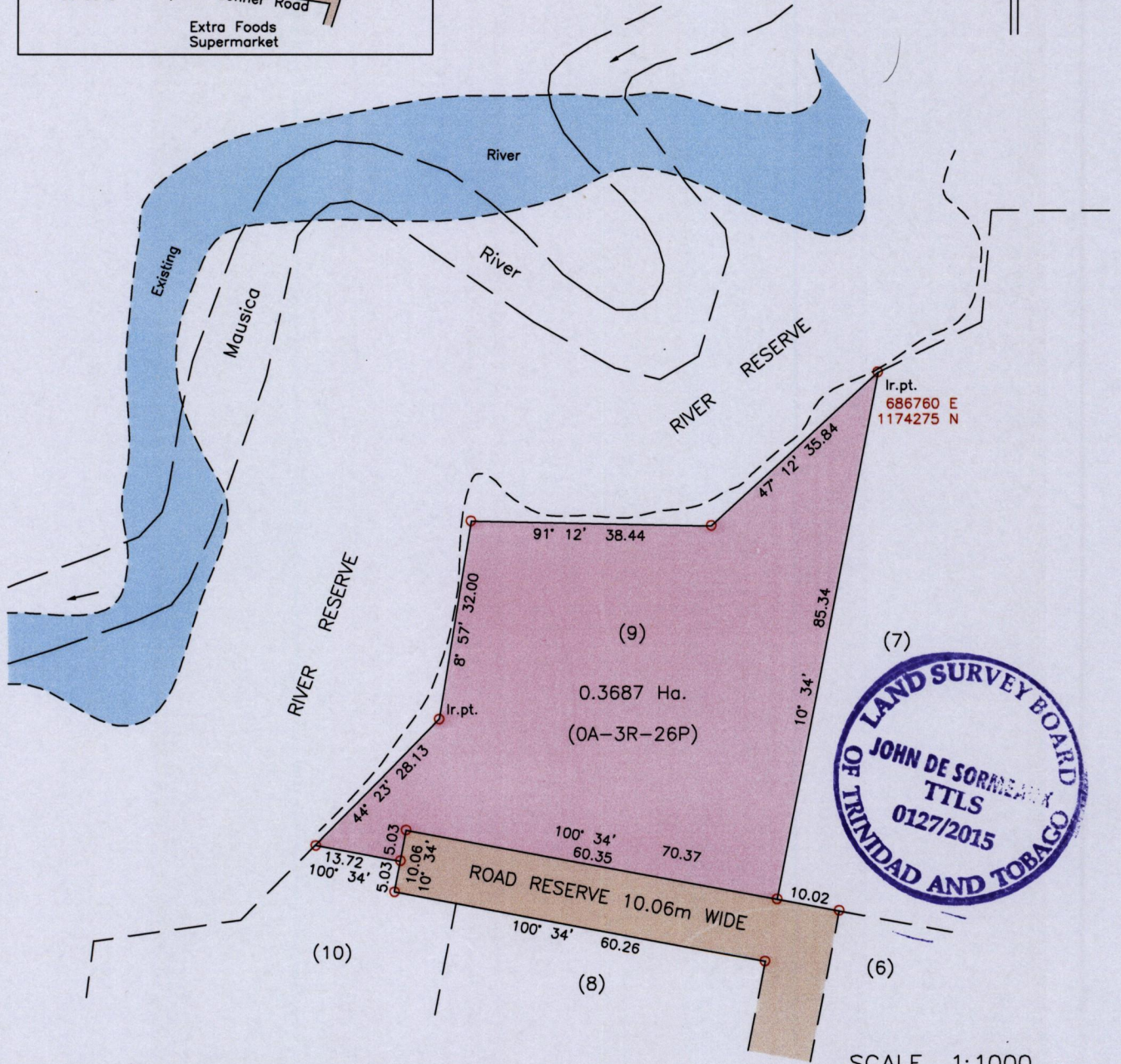
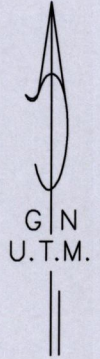
Process JD 108968



24C
Cadastral Sheet 3/a B.24.H.
Ward of Arima
County of St. George
O'Meara, Arima

REDEFINITION SURVEY

R.P.O.Vol.1107 Fol.455
C.T.Vol.2293 Fol.196
C.T.Vol.4447 Fol.127



- Notes: ○ Denotes Ir.f.d. unless otherwise indicated
Bearings are U.T.M. Grid based on Solar Observations
Previous survey by Jeffrey Bartholomew in June to Oct. 1980
Coordinates obtained by handheld GPS (UTM Zone 20, Naparima ± 5.0m)

SCALE 1:1000
Distances are in METRES

PLAN of a parcel of land coloured pink in the Ward of Arima
Containing zero point three six eight seven hectares
Surveyed by me, with due authority, in March 2015 for Shaleiza Mohammed Giebertmann
Certified Correct in accordance with Regulation 25(1) of the Land Surveyors Regulations 1998.

Checked by

John de Sormeaux

Entered Ministry of Food Production Land and Marine Affairs Trinidad and Tobago Land Surveyor, 14th April 2015.

JD07/2015 APR 15 2015 #186 RR Lands & Surveys Division