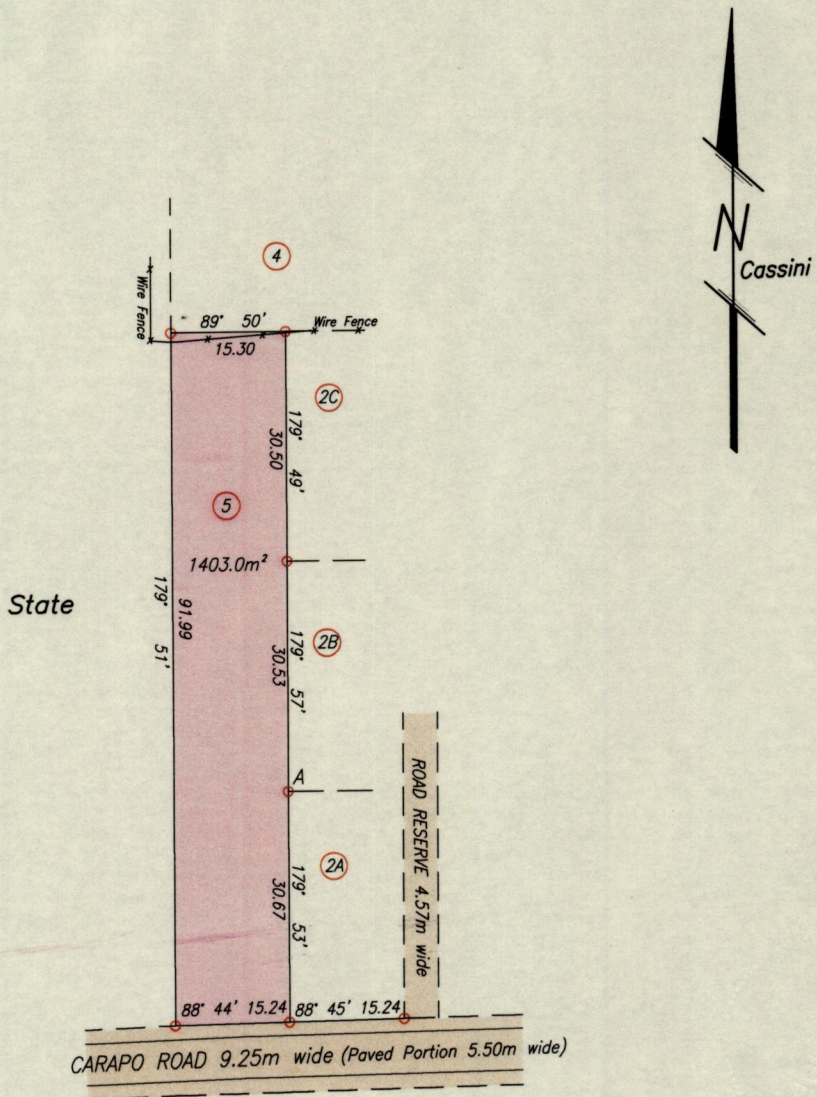


Process ~~SD~~#108963

Ref.: R.P.O. Vol.615 Fol.637
Bk.579 Fol.201
Bk.957 Fol.261

Cadastral Sheet B.24.0. $\frac{24F}{1/a}$
Borough of Arima
County of St. George



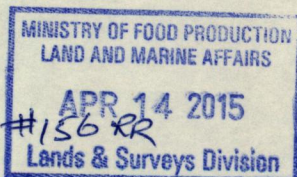
A=	N 1171534	Handheld GPS
	E 685686	UTM-Nap. ±5m

○ Denotes Iron Found except otherwise stated
Bearings are Cassini Grid based on Solar Observations

SCALE 1/1000
Distances are in metres

Plan of a parcel of land coloured pink in the Borough of Arima
Containing one thousand, four hundred and three point zero square metres
Surveyed by me, with due authority, in April 2015 at the request of Randolph Joseph
Certified Correct in accordance with Regulation 25 (1) of the Land Surveyors' Regulations 1998.

Entered on



G. Burkett
Trinidad & Tobago Land Surveyor

14TH APRIL2015