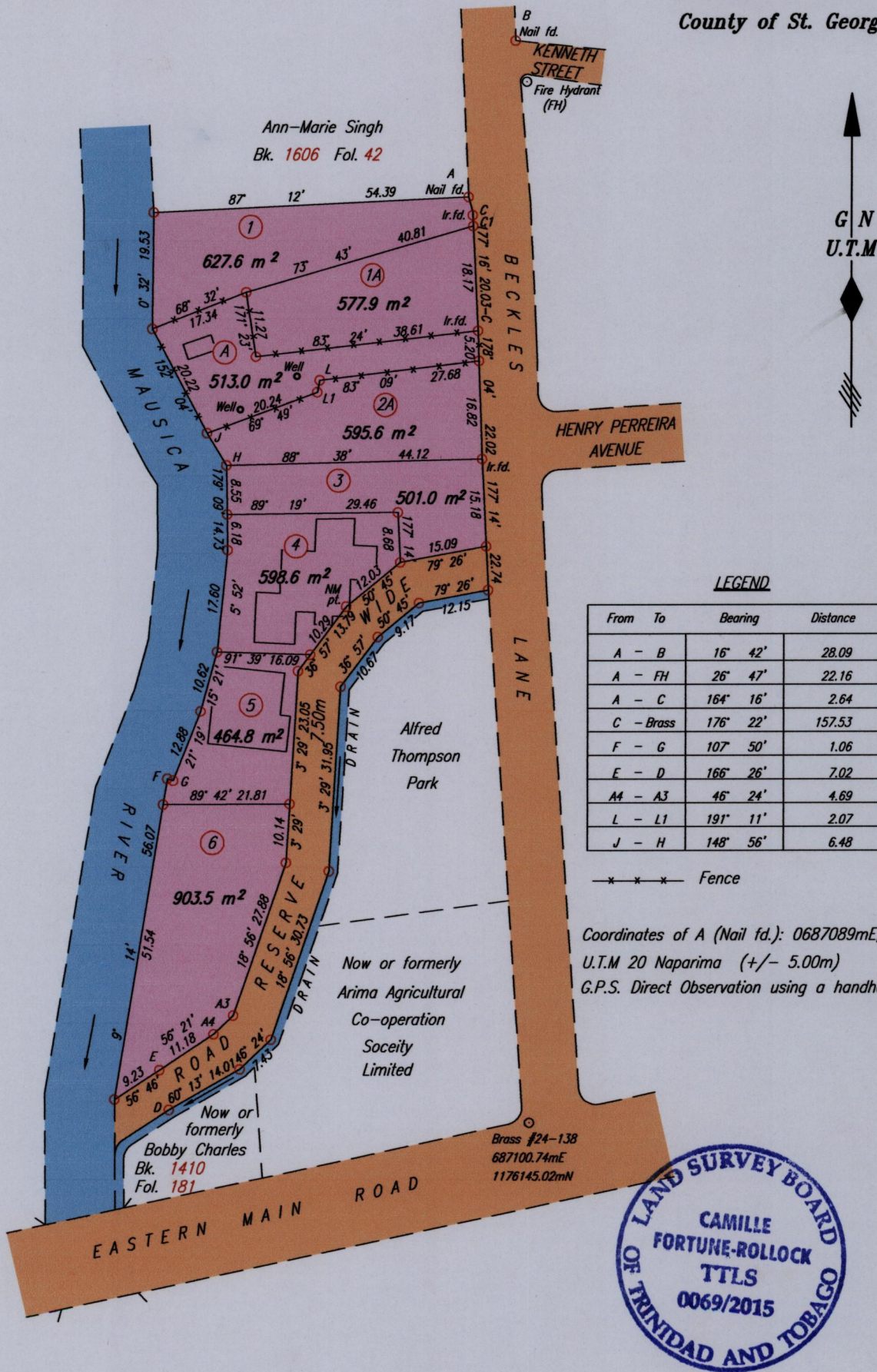


1557

1831

Process JD# 111297
Bk. 1410 Fol. 77

Cadastral Sheet B.19.P. 24C
Borough of Arima
County of St. George



○ Denotes Iron put except where otherwise stated
Bearings are U.T.M. Grid based on Solar Observations
To obtain Cassini Bearings + 18 minutes

SCALE 1:1000

Distances are in METRES

PLAN of 8 Parcels of land coloured pink in the Borough of Arima
Containing together four thousand seven hundred and eighty two point zero square metres
Surveyed by me, with due authority, in November 2014 for the Arima Borough Corporation
Certified Correct in accordance with Regulation 25 (1) of The Land Surveyors' Regulations 1998,

Entered

Camille Fortune-Rollock TTLS

Trinidad & Tobago Land Surveyor 21st July 2015

C:\LESS 2014\TRINIDAD\ARIMA BOROUGH CORP\CR.dwg

MINISTRY OF FOOD PRODUCTION
LAND AND MARINE AFFAIRS
JUL 27 2015
#363
Lands & Surveys Division