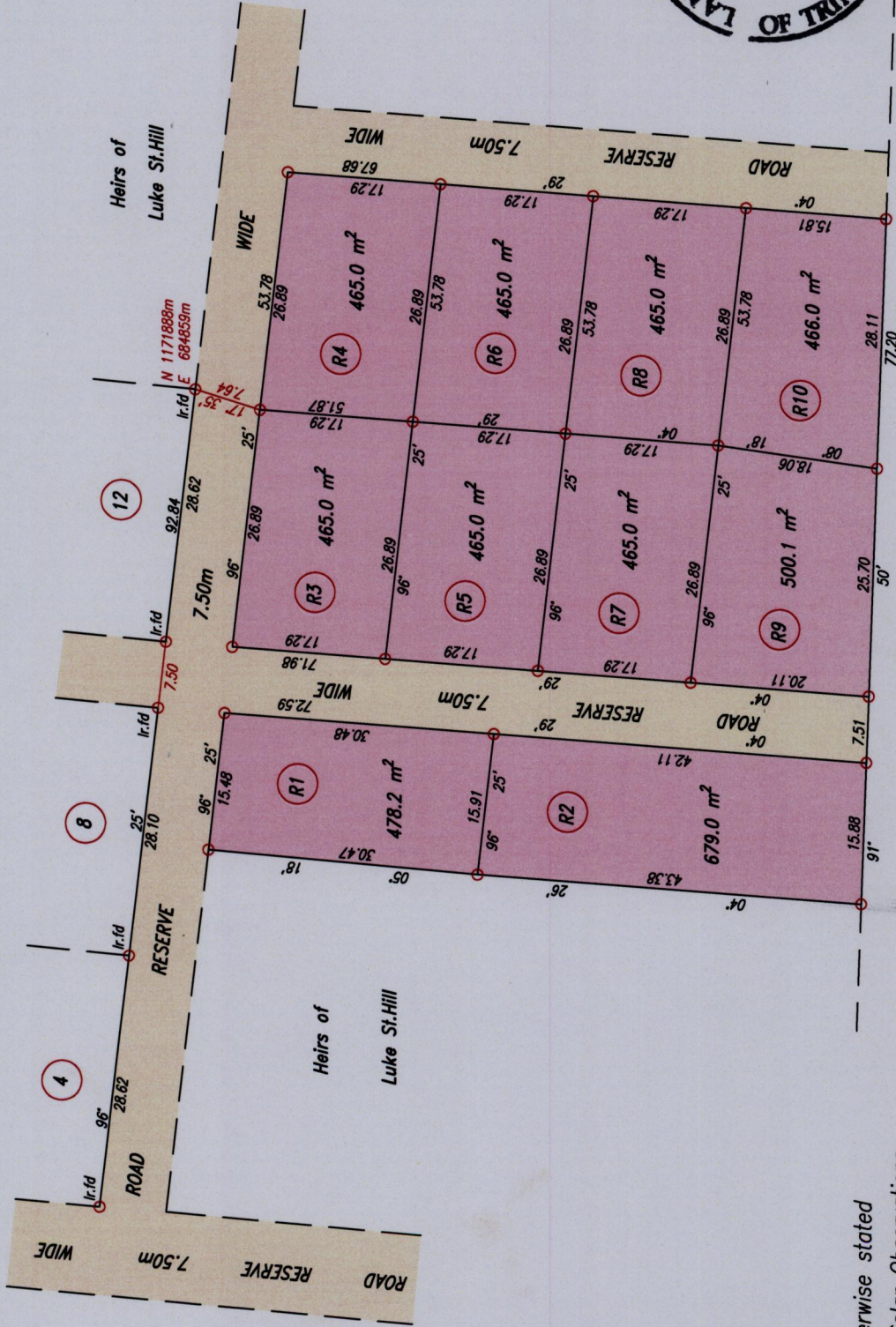
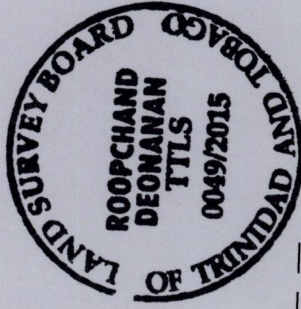
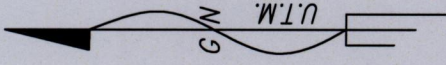


1557

179



F. Thomas

SCALE 1:750

Distances are in metres

Note :

Coordinates obtained by hand held G.P.S. (+/-5.0m.)
For Identification only



Process SD# 111291

○ Denotes Iron put except where otherwise stated

Bearings are U.T.M. Grid based on Solar Observations

PLAN of 10 Parcels of land coloured pink in the Ward of Arima

Containing together zero point four nine one three square metres

Surveyed by me, with due authority in March 2015 for R. St.Hill

Certified Correct in accordance with Regulation 25 (1) of the Land Surveyors' Regulations 1998,

Checked by *R. Deonanan*

Entered on Trinidad & Tobago Land Surveyor. 24th July 2015.
PATH = ADM004 D/DEO/R.ST.HILL 2015 DWG.