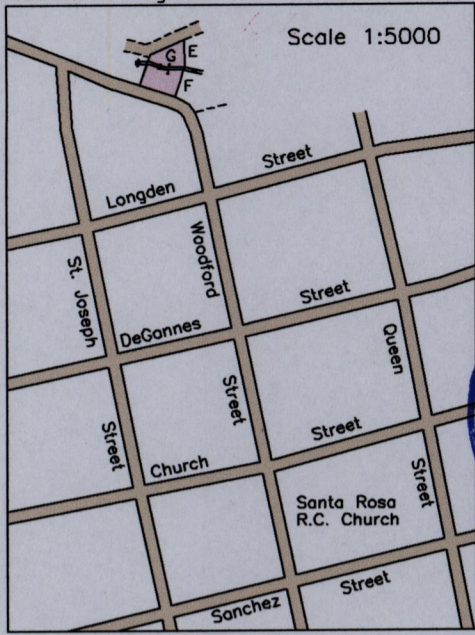


Location Diagram



Scale 1:5000

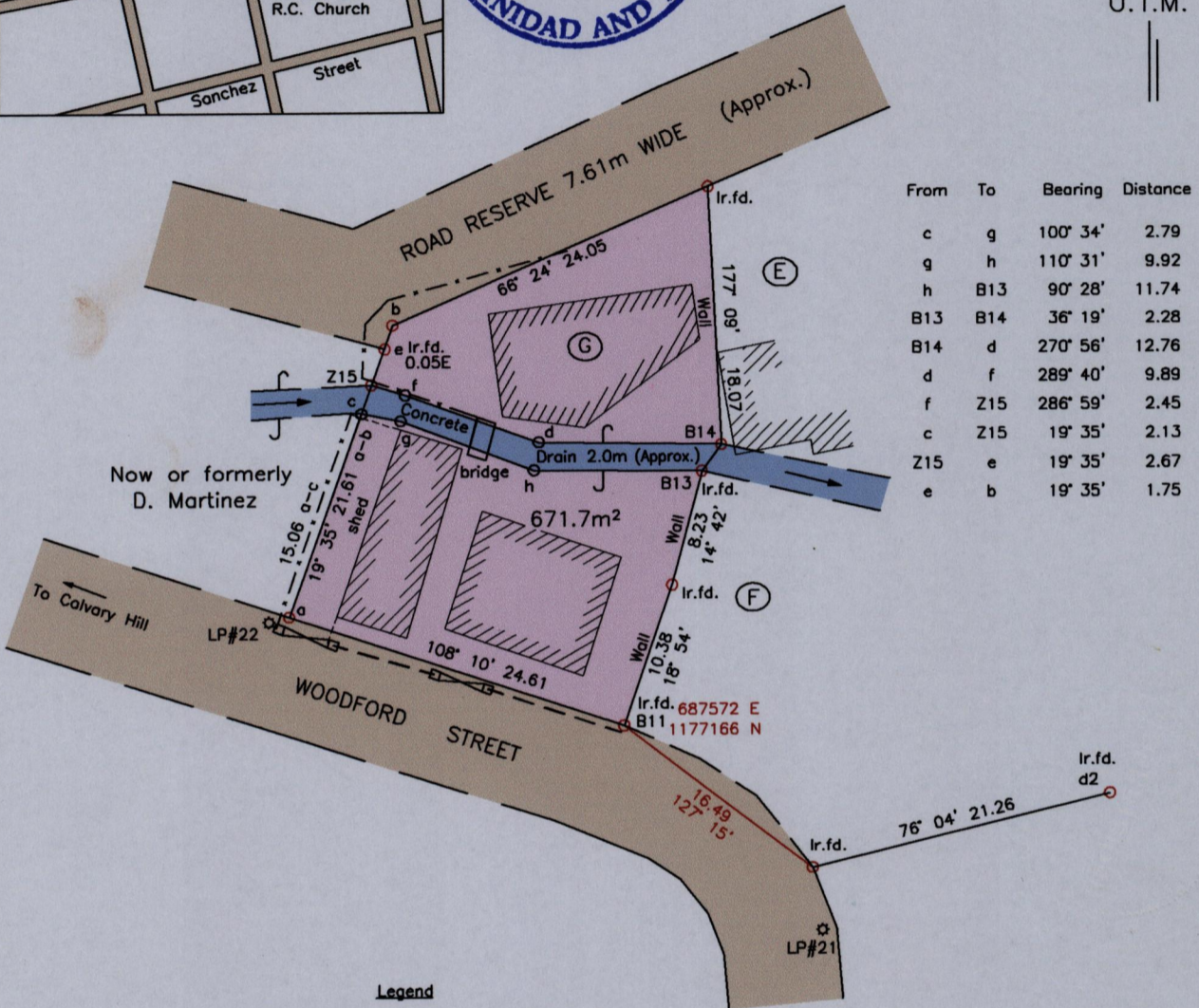
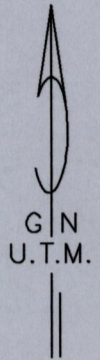
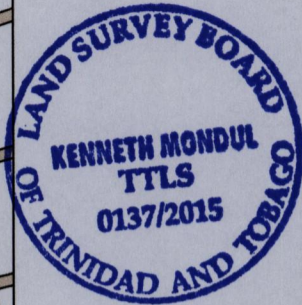
1557

24C
Cadastral Sheet 1/b (B.19.P.)
Borough of Arima
County of St. George

174

REDEFINITION SURVEY

Process ID 111281



Legend

- Lightpole
- Gate
- Chainlink Fence
- Wall

SCALE 1:500

Distances are in METRES

Reference:
PLAN J.B.93

- Notes:
- Denotes Nail pt. unless otherwise indicated
 - c,d,f,g,h = No Mark put
 - Bearings are U.T.M, Grid based on Solar Observations
 - Coordinates obtained by handheld GPS (UTM Zone 20, Naparima ± 5.0m)

PLAN of a parcel of land coloured pink in the Borough of Arima
Containing six hundred and seventy one point seven square metres
Surveyed by me, with due authority, in April 2015 at the request of Amroodee Ali
Certified Correct in accordance with Regulation 25(1) of the Land Surveyors Regulations 1998.

Checked by

Kenneth Mondul

Entered on

Trinidad and Tobago Land Surveyor, 20th July, 2015

KM08/2015

