

1557

171

U.P.R.N No.....

Cadastral Sheet B.25.E. 24C  
4/a

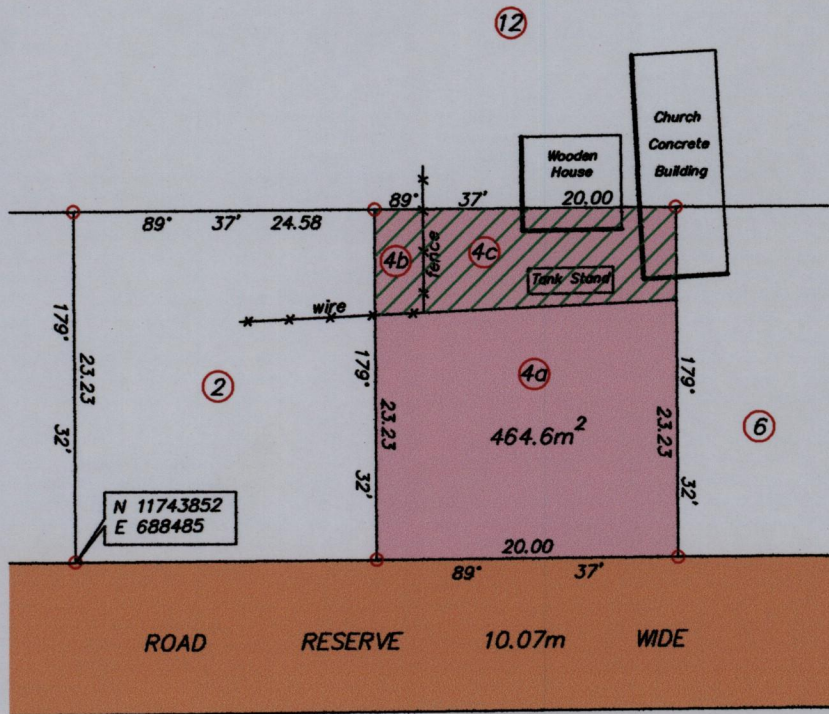
R.P.O Vol. 3400 FOL. 267

Borough of Arima

County of St. George

Process JD# 111268

Malabar Arima



See Bk. 911 Fol. 117  
See Bk. 784 Fol. 15  
PLAN P.C. 63

- Hatched Area (4c) Ebert Joseph - 109.4m<sup>2</sup>
- Hatched Area (4b) Joel Campo - 22.3m<sup>2</sup>

Co-ordinates obtained from hand held GPS  
WGS84 U.T.M. Zone 20, +/- 5.00m

○ Denotes Iron found

Bearings are UTM Grid based on Solar Observations

Note : To obtain Cassini Grid bearings add 18 minutes

Plan of a Parcel of land coloured pink in the Borough of Arima  
Containing four hundred and sixty four point six square metres

Surveyed by me, with due authority in July 2015 for Zobida Gomez

Certified Correct in accordance with Regulation 25 (1) of the Land Surveyors Regulations 1998

SCALE 1/500

Distances are in metres



*Hugo Somarsingh*

Entered on..... Trinidad and Tobago Land Surveyor (T.T.L.S.).....

*20th July*

