

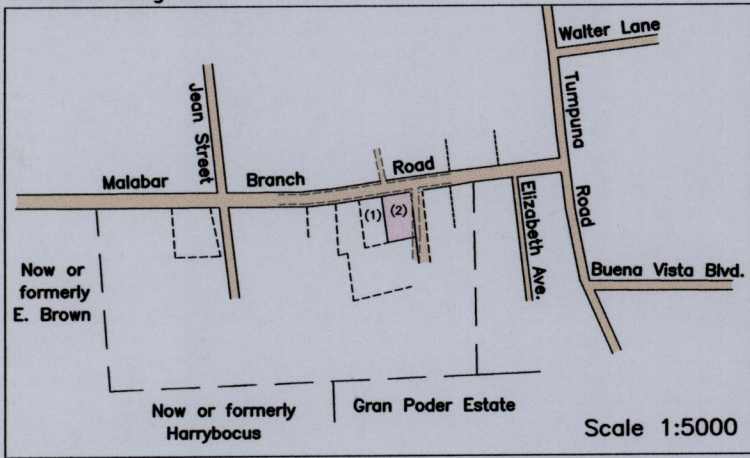
1557

1683

R.D.# DE200700682247

Process ID# 111233

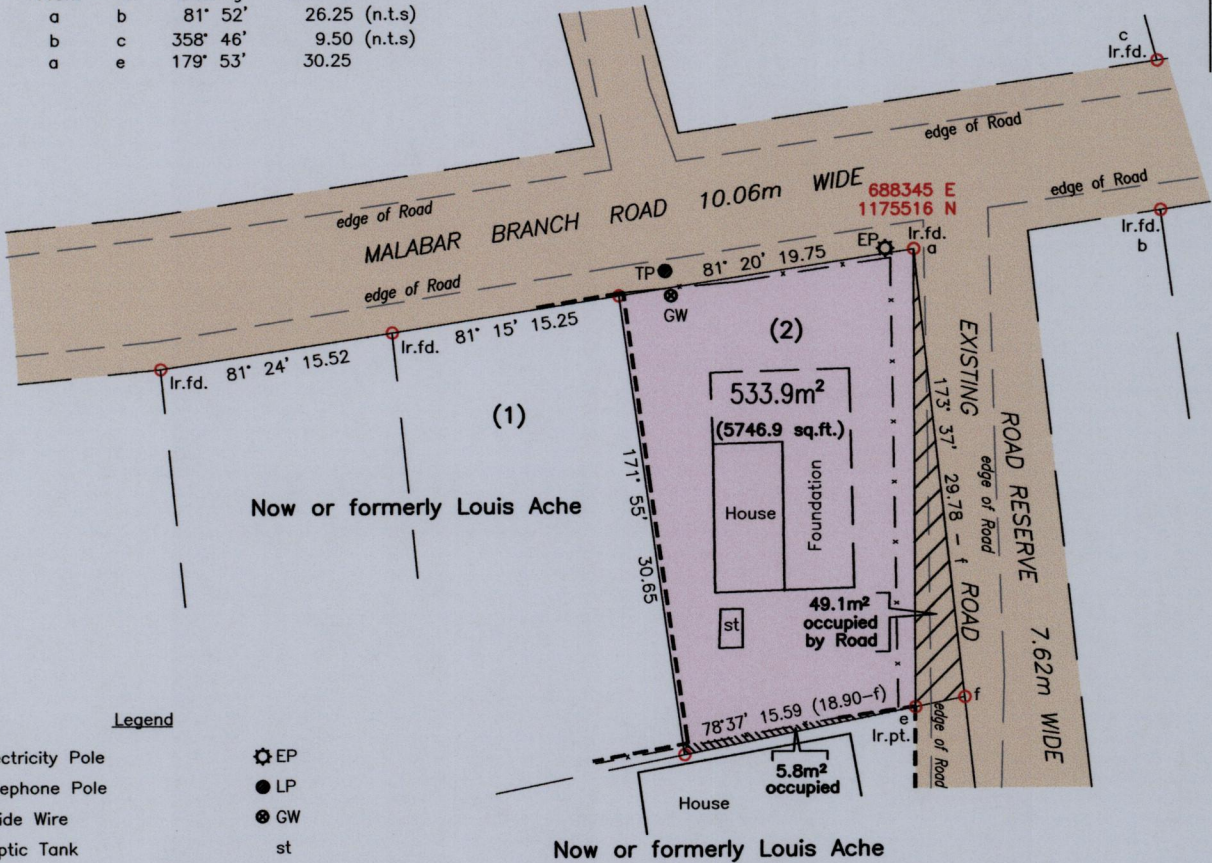
Location Diagram



From	To	Bearing	Distance
a	b	81° 52'	26.25 (n.t.s)
b	c	358° 46'	9.50 (n.t.s)
a	e	179° 53'	30.25

24C
Cadastral Sheet 1/d B.25.A.
Borough of Arima
County of St. George

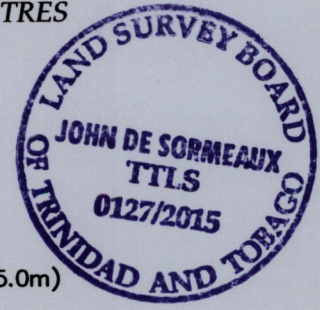
Lot 2 also called Lot 50
Malabar Branch Road, Arima



SCALE 1:500
Distances are in METRES

Reference:
R.D.# 12126/1983

Notes: ○ Denotes Nail pt. unless otherwise indicated
Bearings are U.T.M. Grid based on Solar Observations
Previous survey by Anwar Ali in Sept. 1981 for Louis Andre Ache
Previous survey by Hugo Somarsingh in Dec. 2003 for Louis Ache
Coordinates obtained by handheld GPS (UTM Zone 20, Naparima ± 5.0m)



PLAN of a parcel of land coloured pink in the Borough of Arima
Containing five hundred and thirty three point nine square metres
Surveyed by me, with due authority, in June 2015 for Leslie Charles St. Clair & Sharon St. Clair
Certified Correct in accordance with Regulation 25(1) of the Land Surveyors Regulations 1998

Checked by

John de Sormeaux

Entered on

Trinidad and Tobago Land Surveyor, 15th July 2015.

