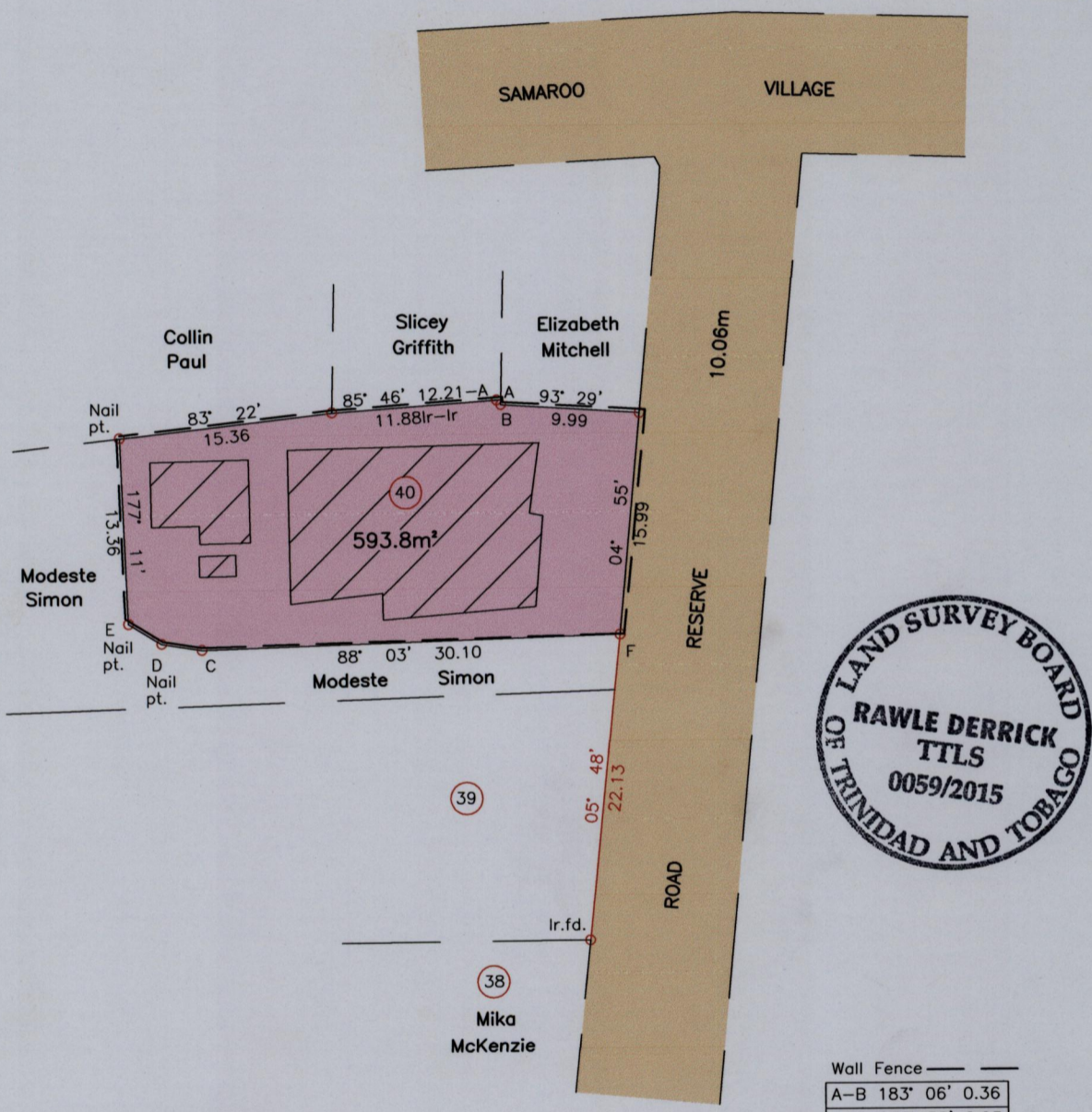


1557

Cadastral Sheet B.24.D, 24C 161
Borough of Arima
County of St. George

Process JPH 111184

SAMAROO VILLAGE, ARIMA



| | |
|------------|---------------|
| Wall Fence | |
| A-B | 183' 06' 0.36 |
| C-D | 278' 58' 2.93 |
| D-E | 301' 15' 2.78 |

Ir.pt.=F:-N:1175321m
E:686972m
UTM 20, NAP Datum ±7m
GPS (Hand Held)

SCALE 1/500
Distances are in Metres

○ Denotes Iron put except otherwise stated
Bearings are UTM Grid based on Solar Observations
Plan of a Parcel of land coloured pink in the Borough of Arima
Containing five nine three point eight square metres
Surveyed by me with due authority, in July 2015 for Peter Mellony
Certified Correct in accordance with Regulation 25 (1) of the
Land Surveyors Regulations 1998.

Checked by Rawle Derrick
Trinidad & Tobago Land Surveyor July 132015

