

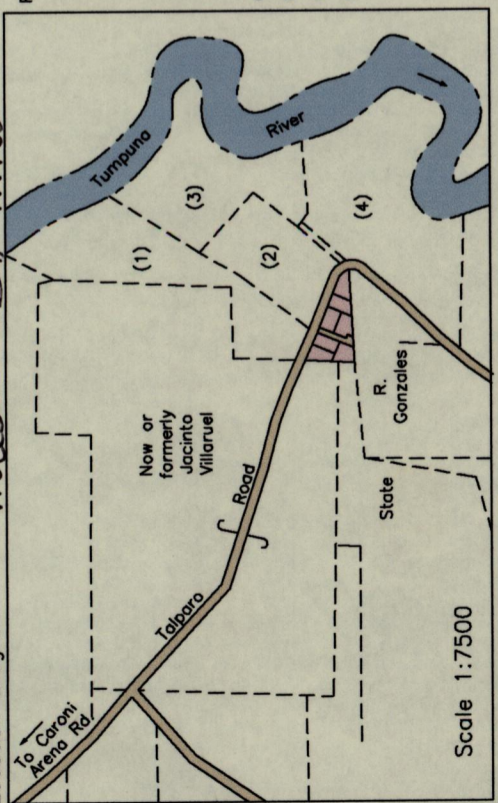
34C  
Cadastral Sheet 2/a (D.5.M.)  
Ward of San Rafael  
County of St. George  
Talparo

1557

160

G652014A.DWG

Location Diagram



From	To	Bearing	Distance
m	k	22° 49'	7.50
k	j	292° 49'	5.30
a	b	2° 20'	13.17
f	g	36° 11'	14.24

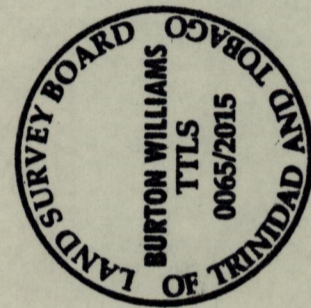
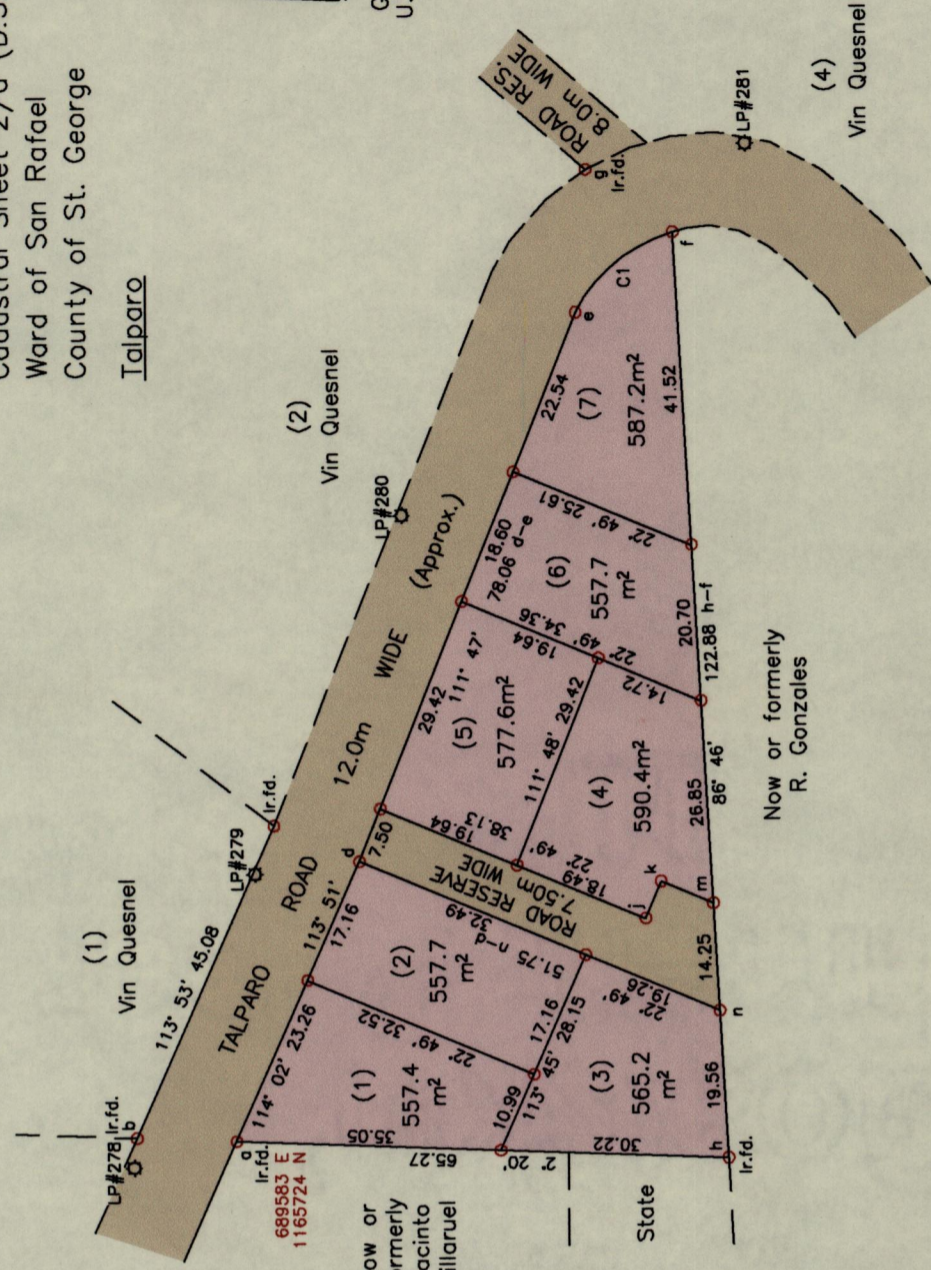
Curve C1  
Delta 45° 41'  
Radius 21.50  
Chord e-f 140° 36' 16.69

Legend

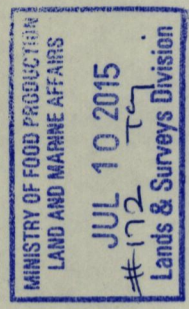
Lightpole  
O.L.P.

References:  
Blk.14 Fol.28  
PLAN G.A.208

Notes: ○ Denotes Ir.pt. unless otherwise stated  
Bearings are U.T.M. Grid based on Solar Observations  
Previous survey by G.R. Jardine in July 2001 for Vin Quesnel  
Coordinates obtained using handheld GPS (UTM Zone 20, Naparima ± 5.0m)



SCALE 1:1000  
Distances are in metres



PLAN of 7 parcels of land coloured pink in the Ward of San Rafael  
Containing together three thousand nine hundred and ninety three point two square metres  
Surveyed by me, with due authority, in July 2014 for Herman Lee King & Associates  
Certified Correct in accordance with Regulation 25(1) of the Land Surveyors Regulations 1998.

Checked by .....  
Entered on .....  
Trinidad and Tobago Land Surveyor, ..... 7/1/2015.

*Burton Williams*