

1557

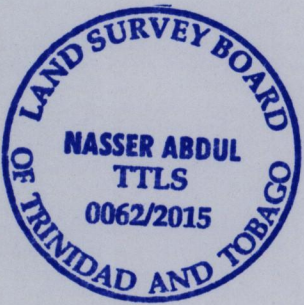
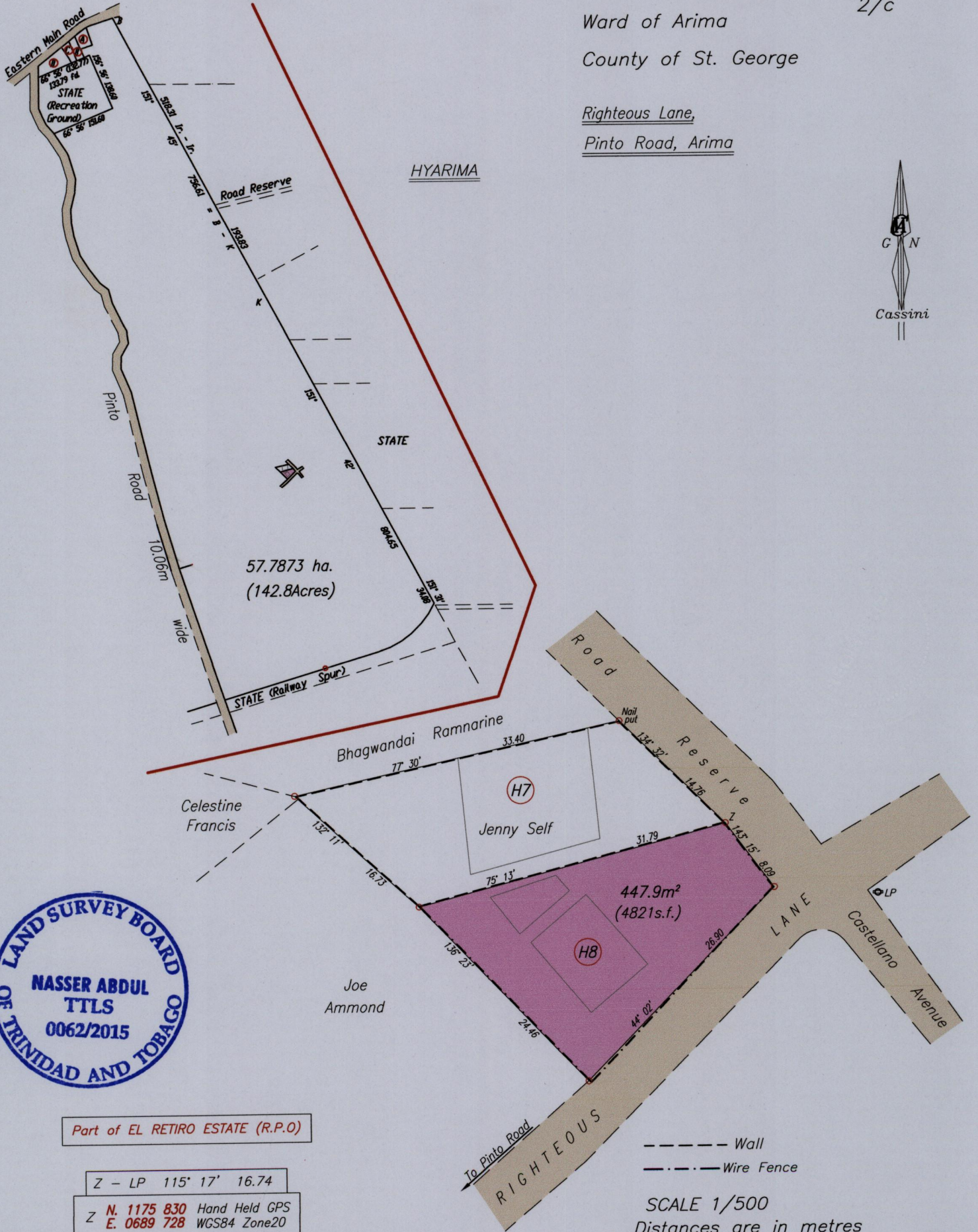
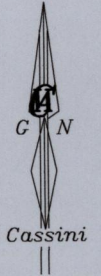
156

Process J2H 11157

Cadastral Sheet B.25.A. 24C
2/c
Ward of Arima
County of St. George

Righteous Lane,
Pinto Road, Arima

HYARIMA



Part of EL RETIRO ESTATE (R.P.O)

Z - LP 115' 17' 16.74

Z N. 1175 830 Hand Held GPS
E. 0689 728 WGS84 Zone20

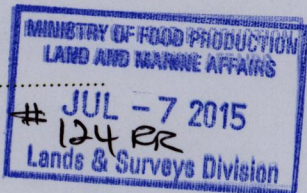
--- Wall
- - - Wire Fence

SCALE 1/500
Distances are in metres

○ Denotes Iron Put unless otherwise stated
Bearings are Cassini Grid based on Solar Observations
PLAN of a Parcel of land coloured pink in the Ward of Arima
Containing four four seven point nine square metres
Surveyed by me, with due authority, in June 2015 for Augustine Lambkin
Certified Correct In accordance with Regulation 25 (1) of the Land Surveyors' Regulations 1998,

Nasser Abdul

Entered On.....Trinidad & Tobago Land Surveyor2015



7th July

398