

1557

155

Process SD# 111155

Cadastral Sheet B.25.A. 24C
2/c

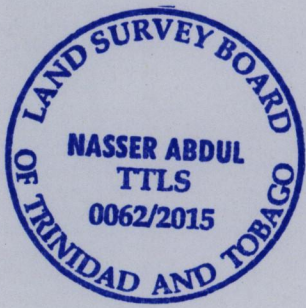
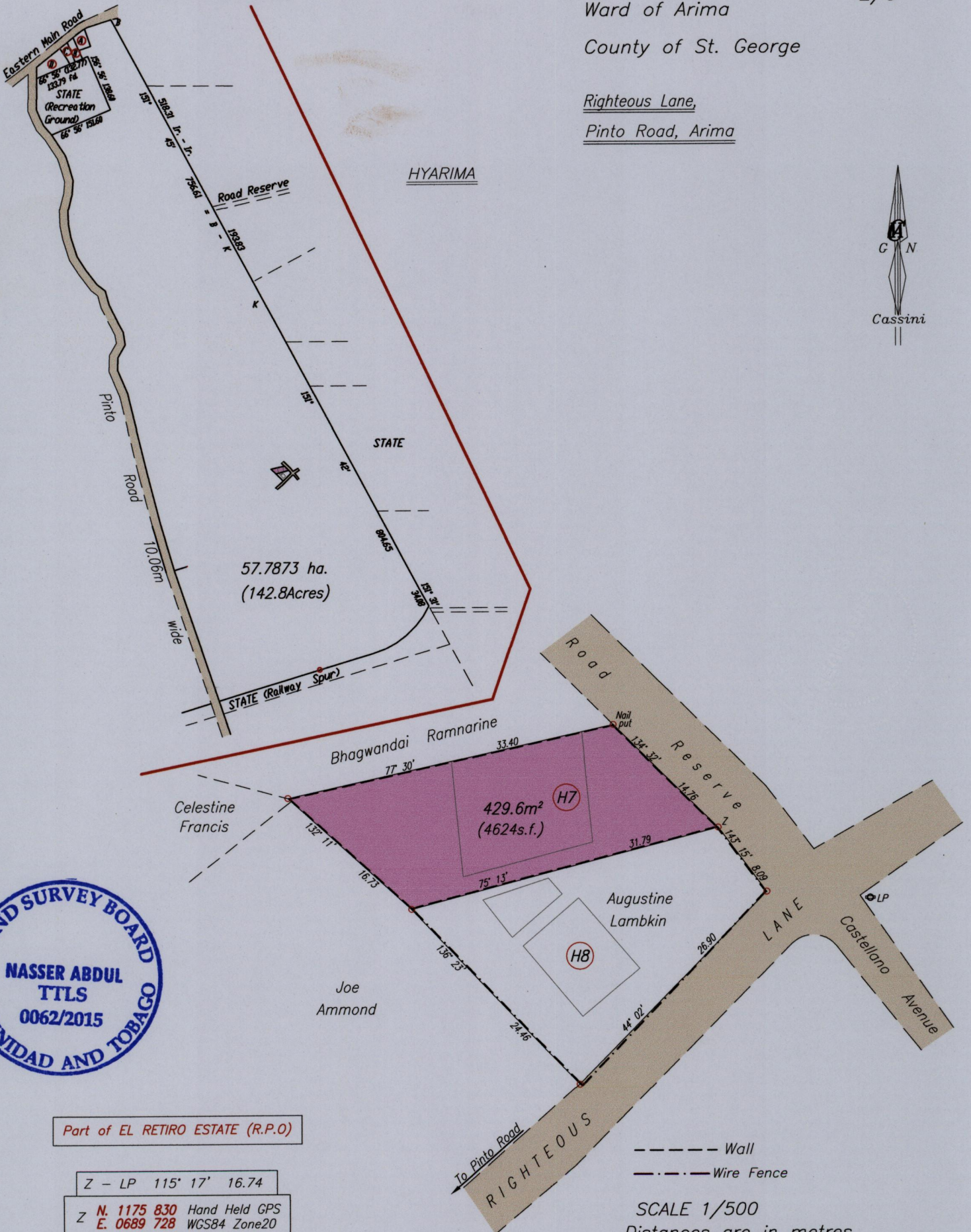
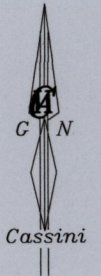
Ward of Arima

County of St. George

Righteous Lane,

Pinto Road, Arima

HYARIMA



Part of EL RETIRO ESTATE (R.P.O)

Z - LP 115' 17' 16.74

Z N. 1175 830 Hand Held GPS
E. 0689 728 WGS84 Zone20

--- Wall
- - - Wire Fence

SCALE 1/500
Distances are in metres

o Denotes Iron Put unless otherwise stated

Bearings are Cassini Grid based on Solar Observations

PLAN of a Parcel of land coloured pink in the Ward of Arima

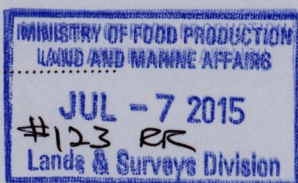
Containing four two nine point six square metres

Surveyed by me, with due authority, in June 2015 for Jenny Self

Certified Correct In accordance with Regulation 25 (1) of the Land Surveyors' Regulations 1998,

Samuel

Entered On.....



Trinidad & Tobago Land Surveyor 7th July 2015

397