

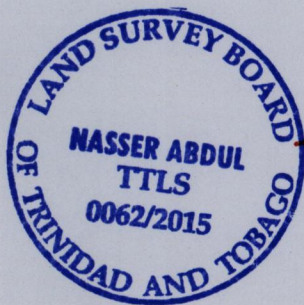
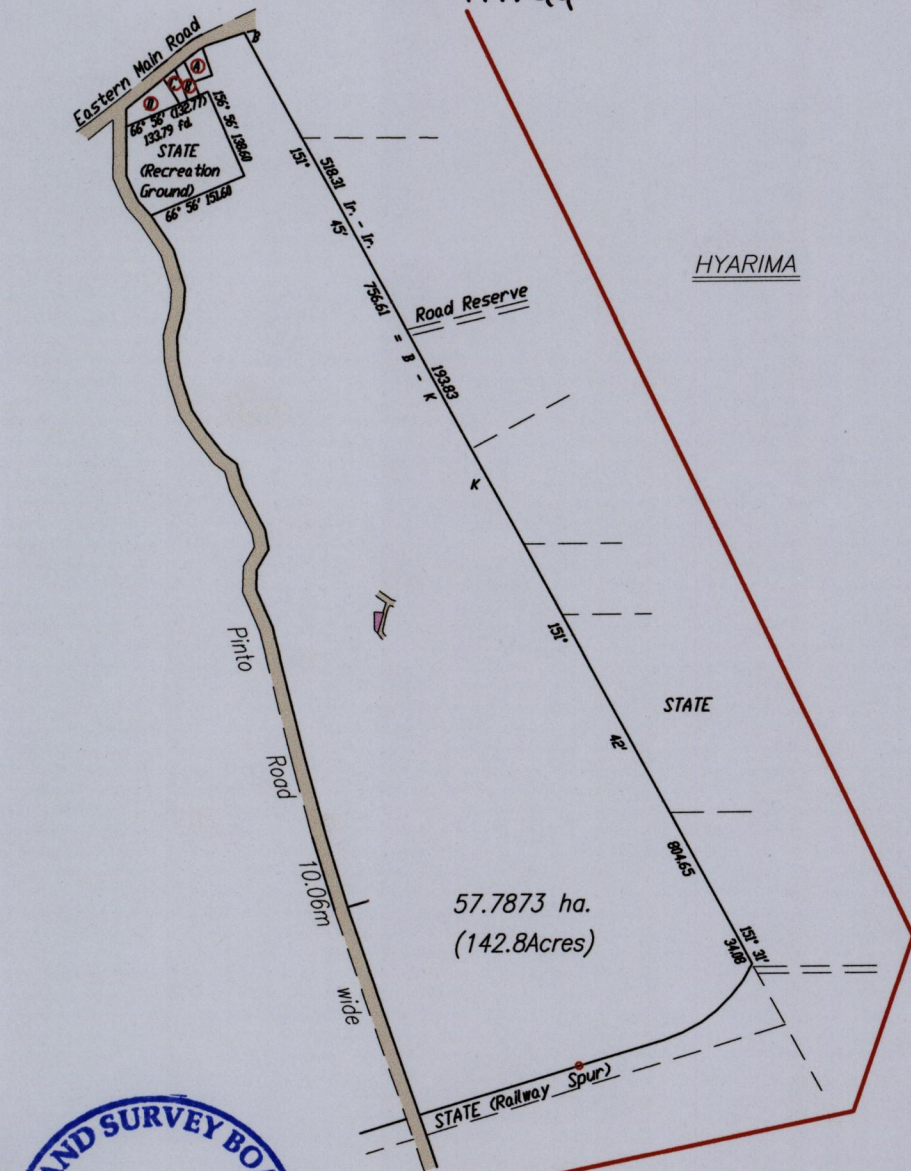
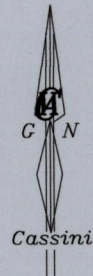
1557

153

Process Lot # 111149

Cadastral Sheet B.25.A. $\frac{24C}{2/c}$
Ward of Arima
County of St. George

Mottley Street,
Pinto Road, Arima



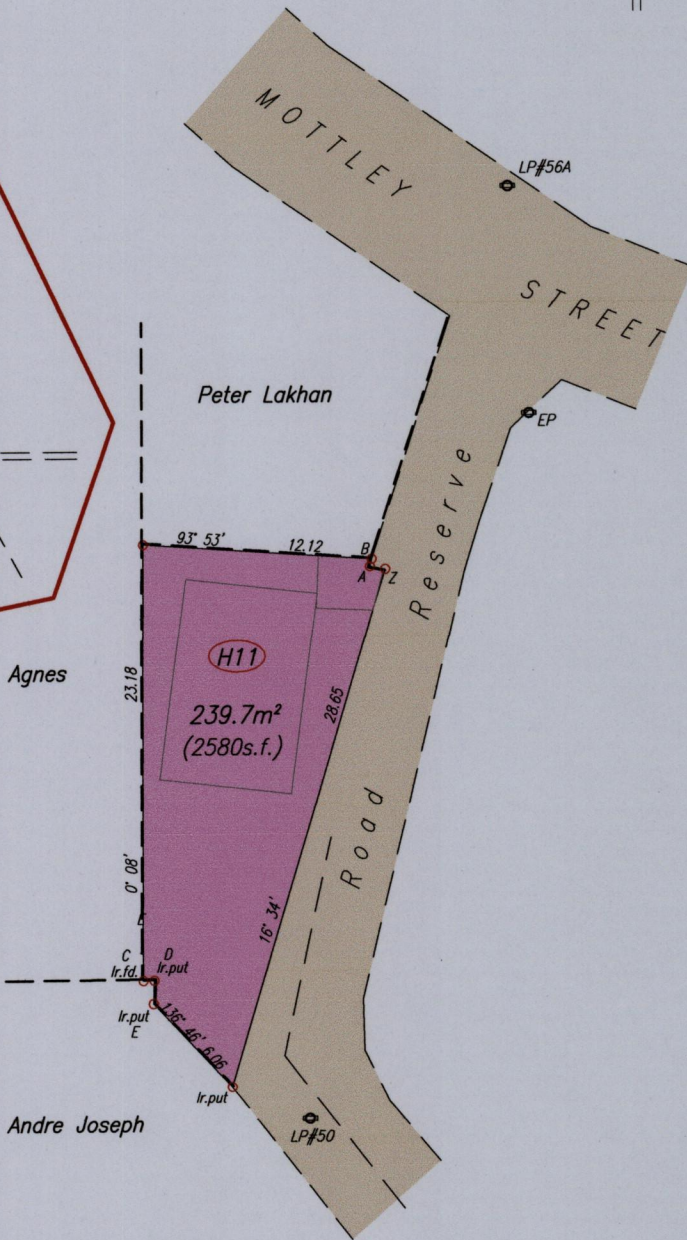
Z - A	280° 25'	0.80
A - B	13° 27'	0.41
C - D	89° 39'	0.58
D - E	182° 07'	1.24

--- Wall

Part of EL RETIRO ESTATE (R.P.O)

Z - LP#56A 17° 49' 21.32

Z N. 1176 065 Hand Held GPS
E. 0689 510 WGS84 Zone20



SCALE 1/400
Distances are in metres

○ Denotes Nail Put unless otherwise stated
Bearings are Cassini Grid based on Solar Observations
PLAN of a Parcel of land coloured pink in the Ward of Arima
Containing two three nine point seven square metres
Surveyed by me, with due authority, in June 2015 for Vera Maharaj-Lopez
Certified Correct In accordance with Regulation 25 (1) of the Land Surveyors' Regulations 1998,

Nasser Abdul

7th July

Entered On..... Trinidad & Tobago Land Surveyor2015

