

1557

133

Borough of Arima

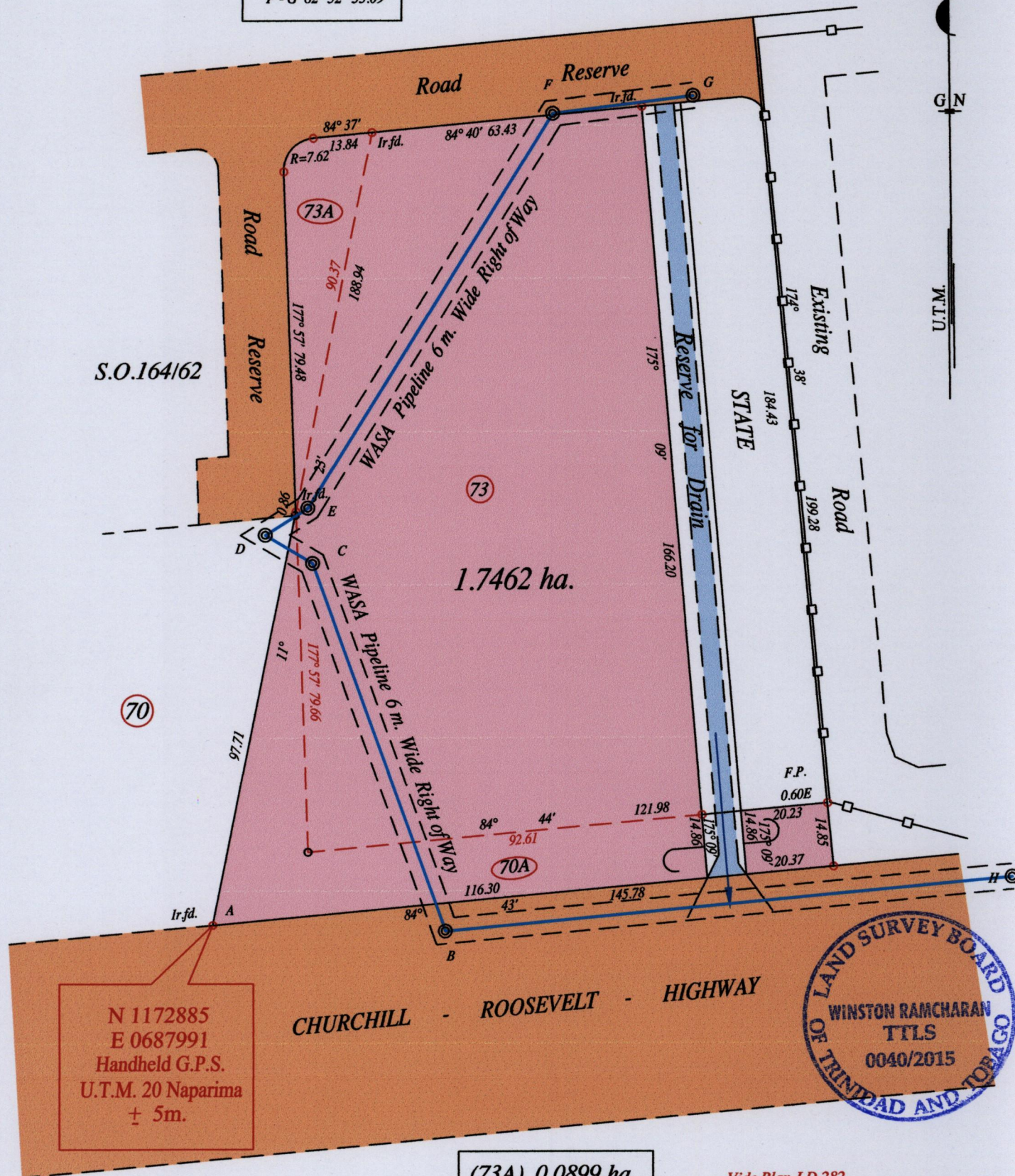
County of St. George

Cadastral Sheet B 24 H, 24 C
3/c

Process ID# 111185

A - B	91° 37' 54.57
B - H	84° 38' 132.72
C - B	160° 06' 91.60
D - C	120° 52' 12.92
E - E	57° 49' 11.81
E - F	31° 57' 108.44
F - G	82° 52' 33.09

STATE



N 1172885
E 0687991
Handheld G.P.S.
U.T.M. 20 Naparima
± 5m.

(73A)	0.0899 ha.
(70A)	0.2766 ha.
(73)	1.3797 ha.

Vide Plan J D 282
Vide Bk. 1219 fol. 3
Vide Bk. 1152 fol. 154,156
Vide Bk. 1238 fol. 125

- ⊙ Denotes Manhole
- Denotes Iron put except stated otherwise.

SCALE : 1:1250

Note: Bearings are U.T.M. grid based on solar observations

Distances are in metres

PLAN of a Parcel of land coloured pink in the Borough of Arima, being amalgamation of three plots
Containing one point seven four six two hectares

Surveyed by me, with due authority, in July 2015 for Evolving Tecknologies & Enterprise Development Company Limited
Certified correct in accordance with Regulation 25 (1) of the Land Surveyors Regulations 1998.

Winston Ramcharan

Entered on Trinidad & Tobago Land Surveyor 6th July 2015

MINISTRY OF FOOD PRODUCTION
LAND AND MARINE AFFAIRS
JUL - 6 2015
Lands & Surveys Division