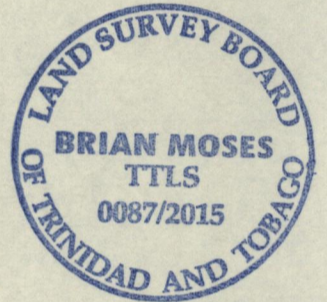
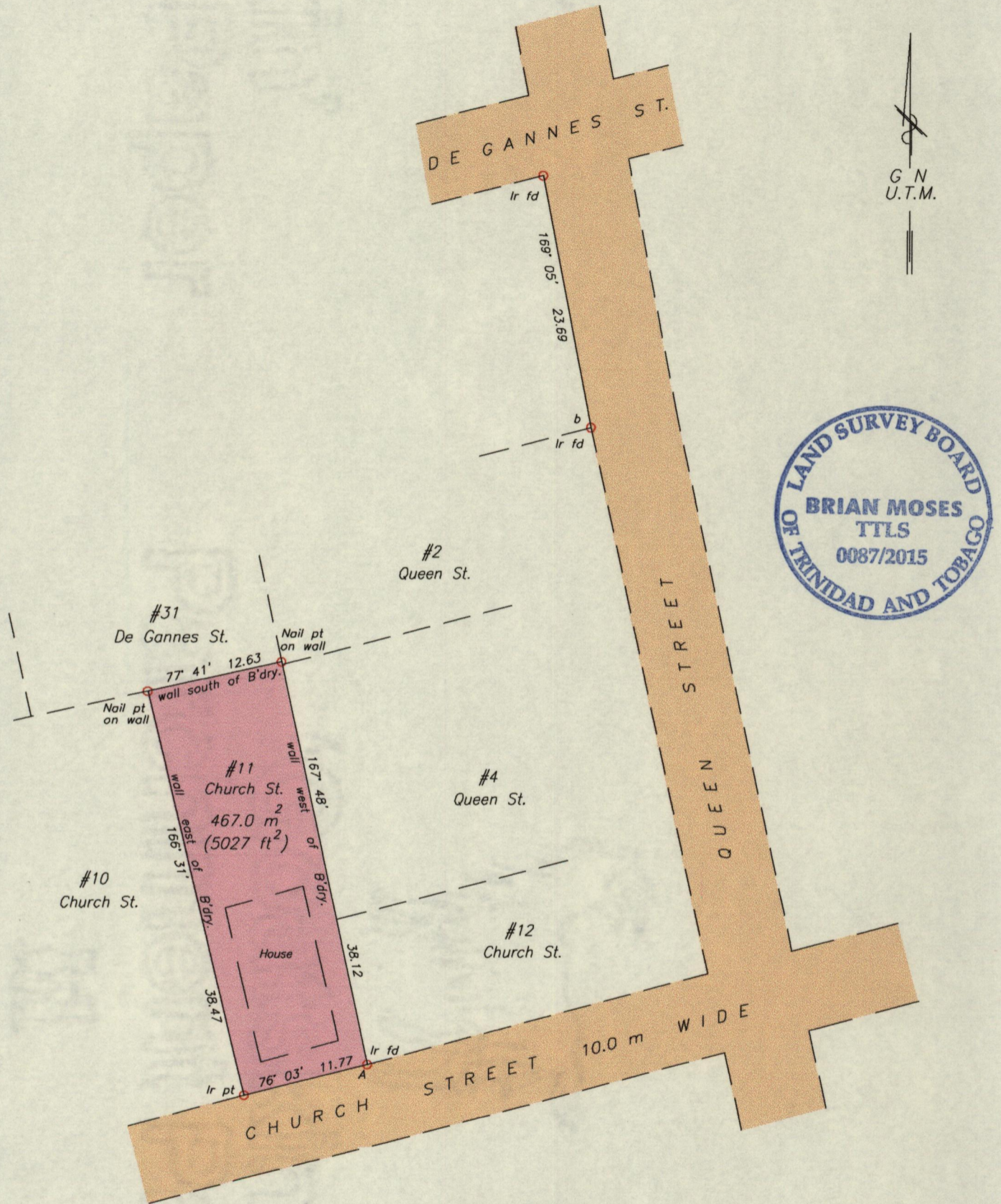


Process ID# 111181

Cadastral Sheet B.19.P ^{24C}/_{17b}

Borough of Arima

County of St. George



A - N 1176936
 E 687640

Derived From Hand-Held GPS (+/-5 m)
 UTM Zone 20 Naparima Co-ordinates

SCALE 1:500
 Distances are in METRES

Bearings are U.T.M. Grid based on Solar observations

PLAN of a Parcel of land coloured pink in the Borough of Arima
 Containing four hundred and sixty seven point zero square metres
 Surveyed by me, with due authority, in June, 2015 for Ayin Wu
 Certified correct in accordance with Regulation 25 (1) of the Land Surveyors,
 Regulations 1998.

Brian Moses
 Trinidad & Tobago Land Surveyor (T.T.L.S.)
 3rd July 2015

