

1557

128

U.P.R.N No.....

Cadastral Sheet B.20.M 24C
2/c & d

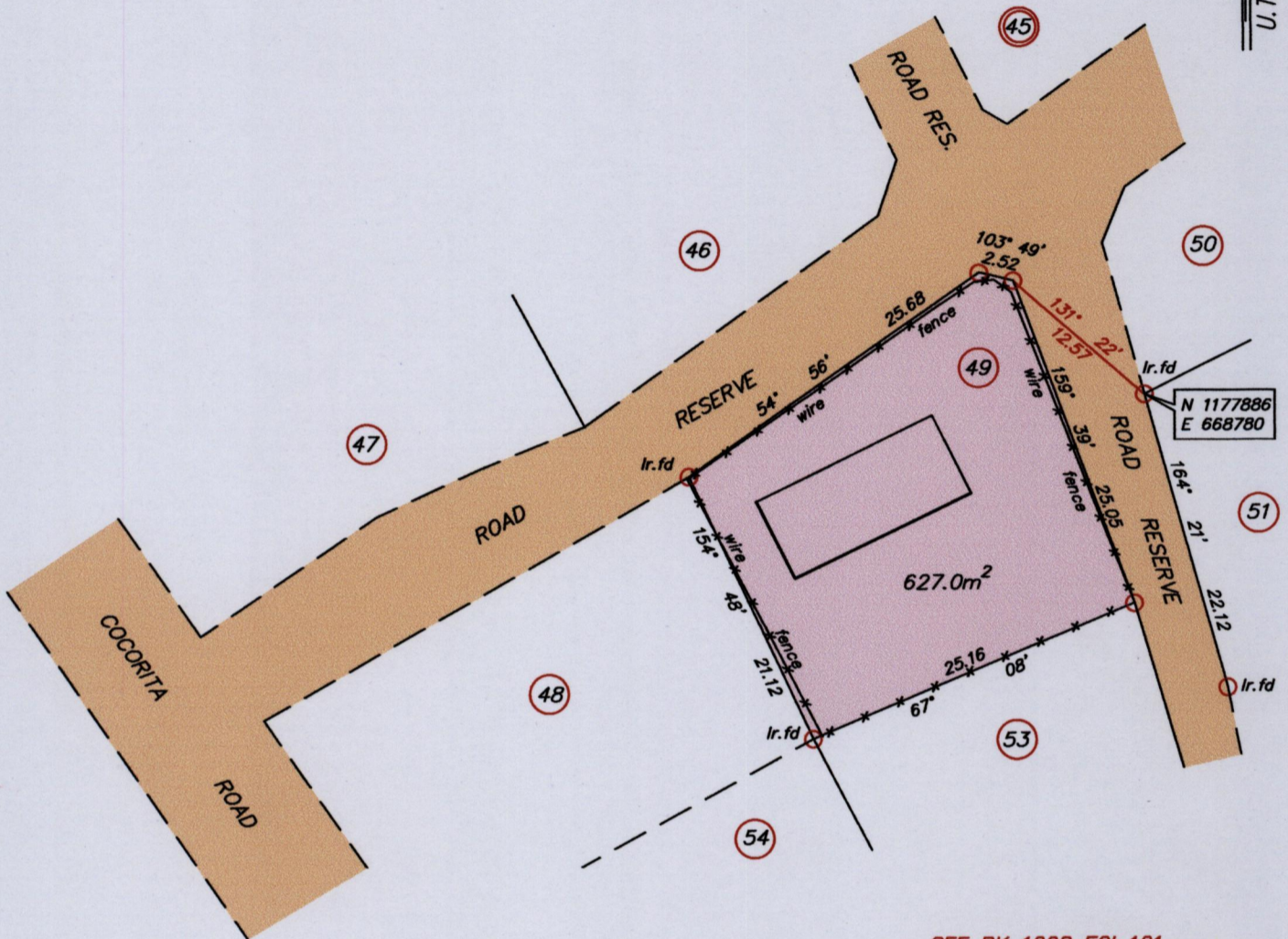
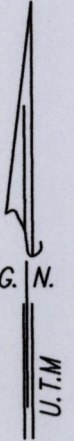
SEE S.O.# 57/198

Borough of Arima

SEE S.O.# 84/93

County of St. George

Process ID# 111151



SEE BK 1008 FOL.101

SEE BK 1089 FOL.51/53

Co-ordinates obtained by hand held G.P.S

WGS 84 U.T.M Zone 20,

-/+ 5.00m

Bearings are UTM Grid based on Solar Observations

Note : To obtain Cassini Grid bearings add 18 minutes

Plan of a Parcel of land coloured pink in the Borough of Arima

Containing six hundred and twenty seven point zero square metres

Surveyed by me, with due authority in June 2015 for Sasha Singh

Certified Correct In accordance with Regulation 25 (1) of the Land Surveyors' Regulations 1998

Hugo Somarsingh

Entered on..... Trinidad and Tobago Land Surveyor (TTLS) 30th June 2015

SCALE 1/500

Distances are in metres

