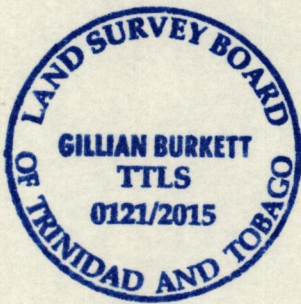
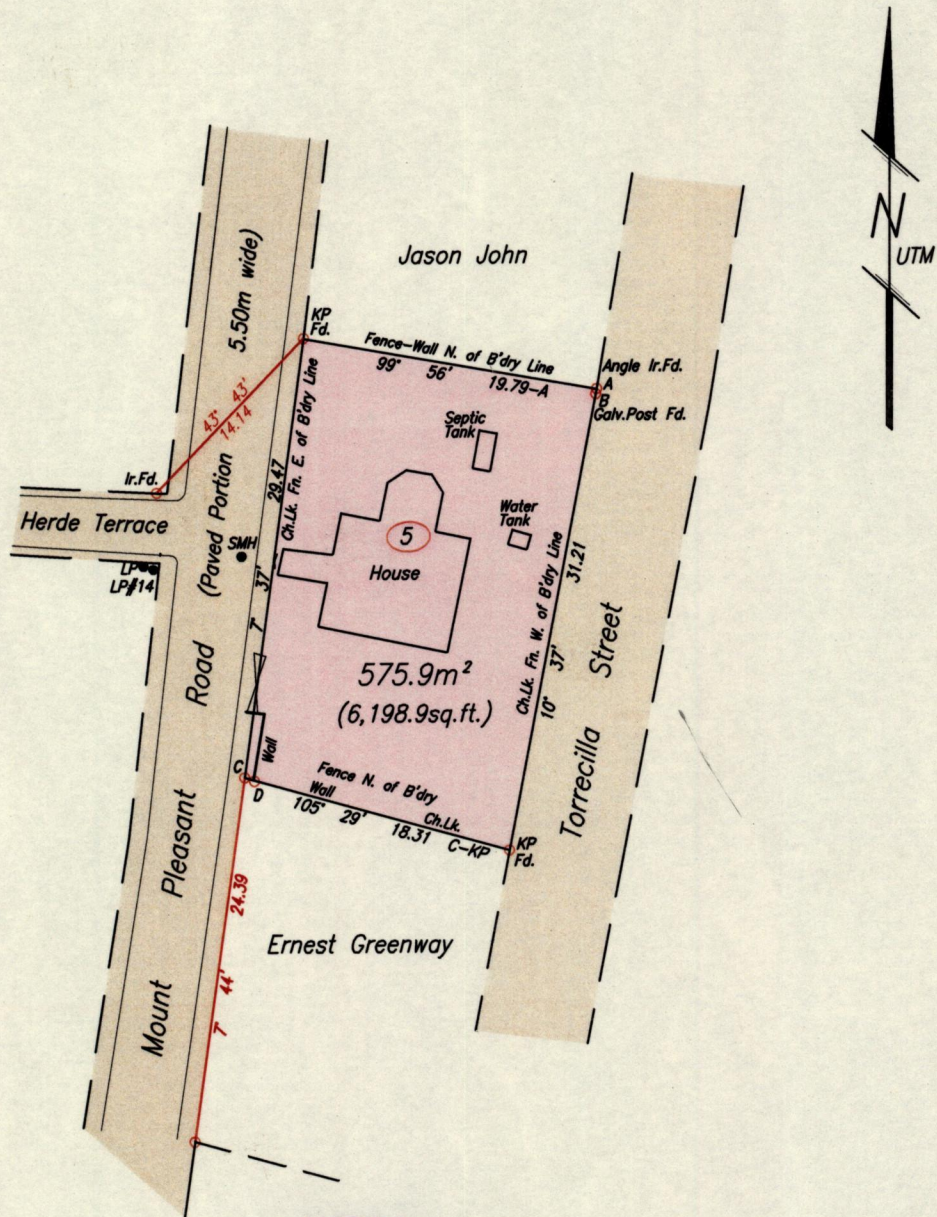


Process ~~SA~~ 110245

1557 Cadastral Sheet B.19.P.  $\frac{24C}{1/b}$  119  
 Borough of Arima  
 County of St. George

Lot #5 Mt. Pleasant Road, Arima  
 Deed No. 1320 of 1946



A = N 1177216 } Handheld GPS  
 E 687880 } UTM-Nap. ±5m

Line	Bearing	Dist. (m)
A - B	188° 57'	0.36
C - D	110° 35'	0.69

○ Denotes Iron Found except otherwise stated  
 Bearings are UTM Grid based on Solar Observations

SCALE 1/500  
 Distances are in metres

Plan of a parcel of land coloured pink in the Borough of Arima  
 Containing five hundred and seventy -five point nine square metres  
 Surveyed by me, with due authority, in May 2015 for Anthony Pierre  
 Certified Correct in accordance with Regulation 25 (1) of the Land Surveyors' Regulations 1998.

*G. Burkett*  
 Trinidad & Tobago Land Surveyor

MINISTRY OF FOOD PRODUCTION  
 LAND AND MARINE AFFAIRS  
 JUN 24 2015  
 #332  
 Lands & Surveys Division

Entered on .....

24<sup>TH</sup> JUNE 2015