

Process ID# 110179

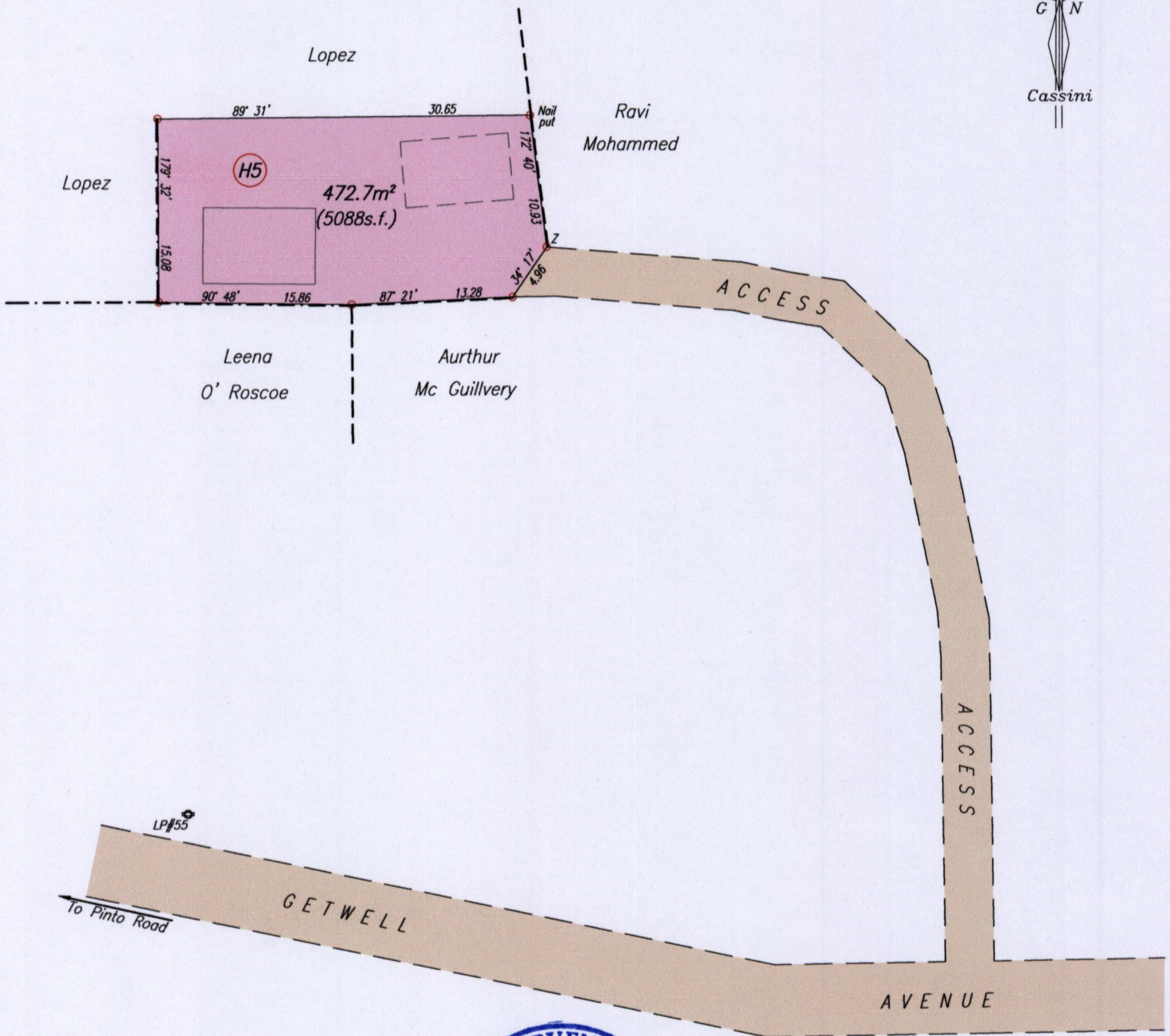
1557

115

Cadastral Sheet B.25.A. $\frac{24C}{2/c}$
Ward of Arima
County of St. George

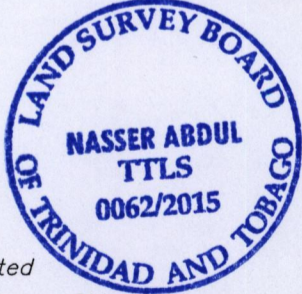
Getwell Avenue
Pinto Road, Arima

HYARIMA



Part of EL RETIRO ESTATE (R.P.O)

Z - LP#55 212' 18' 55.08
Z N. 1176 054 Hand Held GPS
E. 0689 433 WGS84 Zone20



--- Wall
-.- Wire Fence
SCALE 1/500
Distances are in metres

o Denotes Iron Put unless otherwise stated
Bearings are Cassini Grid based on Solar Observations
PLAN of a Parcel of land coloured pink in the Ward of Arima
Containing four seven two point seven square metres
Surveyed by me, with due authority, in June 2014 for Sita Hosein
Certified Correct In accordance with Regulation 25 (1) of the Land Surveyors' Regulations 1998,

Entered On.....
MINISTRY OF FOOD PRODUCTION
LAND AND MARINE AFFAIRS
JUN 23 2015
310
Lands & Surveys Division

Nasser
Trinidad & Tobago Land Surveyor *23rd June*.....2015