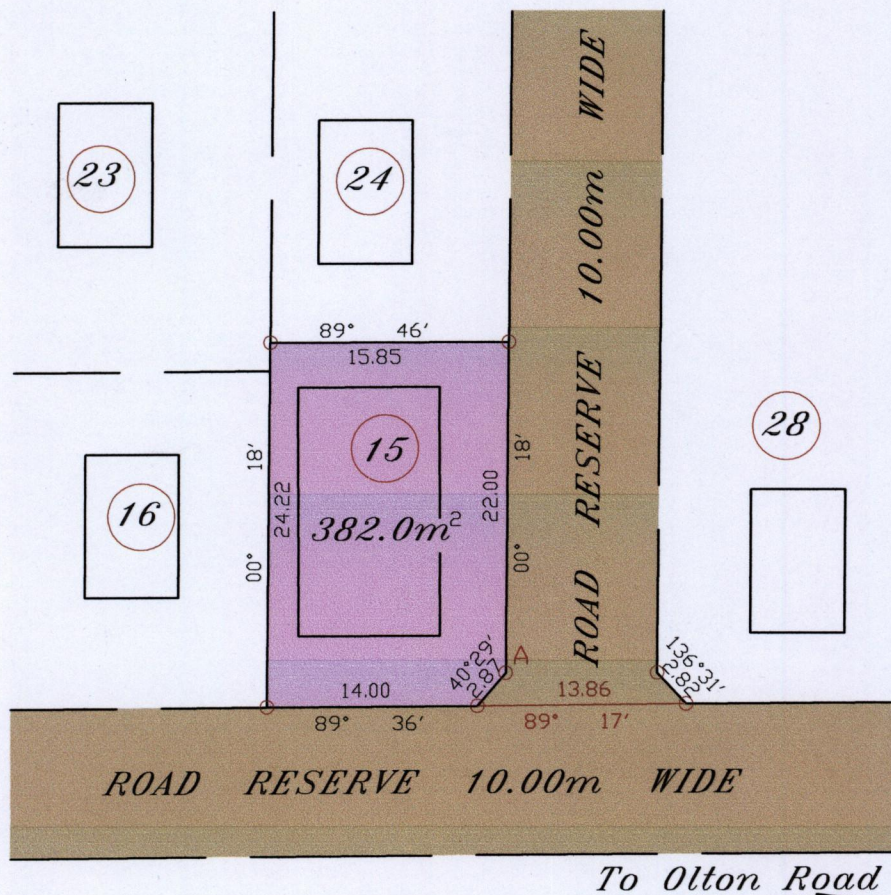


Process ID # 110167



A= N - 1174889
E - 685860

Note : Coordinates obtained by hand held G.P.S.
Naparima Zone 20 (+/-) 5m

○ Denotes iron found unless otherwise stated
Bearings based on solar observations .

SCALE: 1/500

Note : To obtain compass bearing add minutes Distances are in metres.

PLAN of a parcel of land coloured pink in the Ward of Arima.

Containing three hundred and eighty two point zero square metres.

Surveyed by me, with due authority, in June, 2015 for Daniel Alleyne

Certified Correct in accordance with Regulation 25 (1) Land and Surveys Regulation 1998.

Checked by.....

Entered on

[Signature]

Trinidad & Tobago Land Surveyor..... 19 - 6 - 2015

