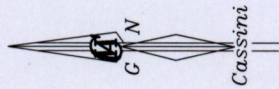


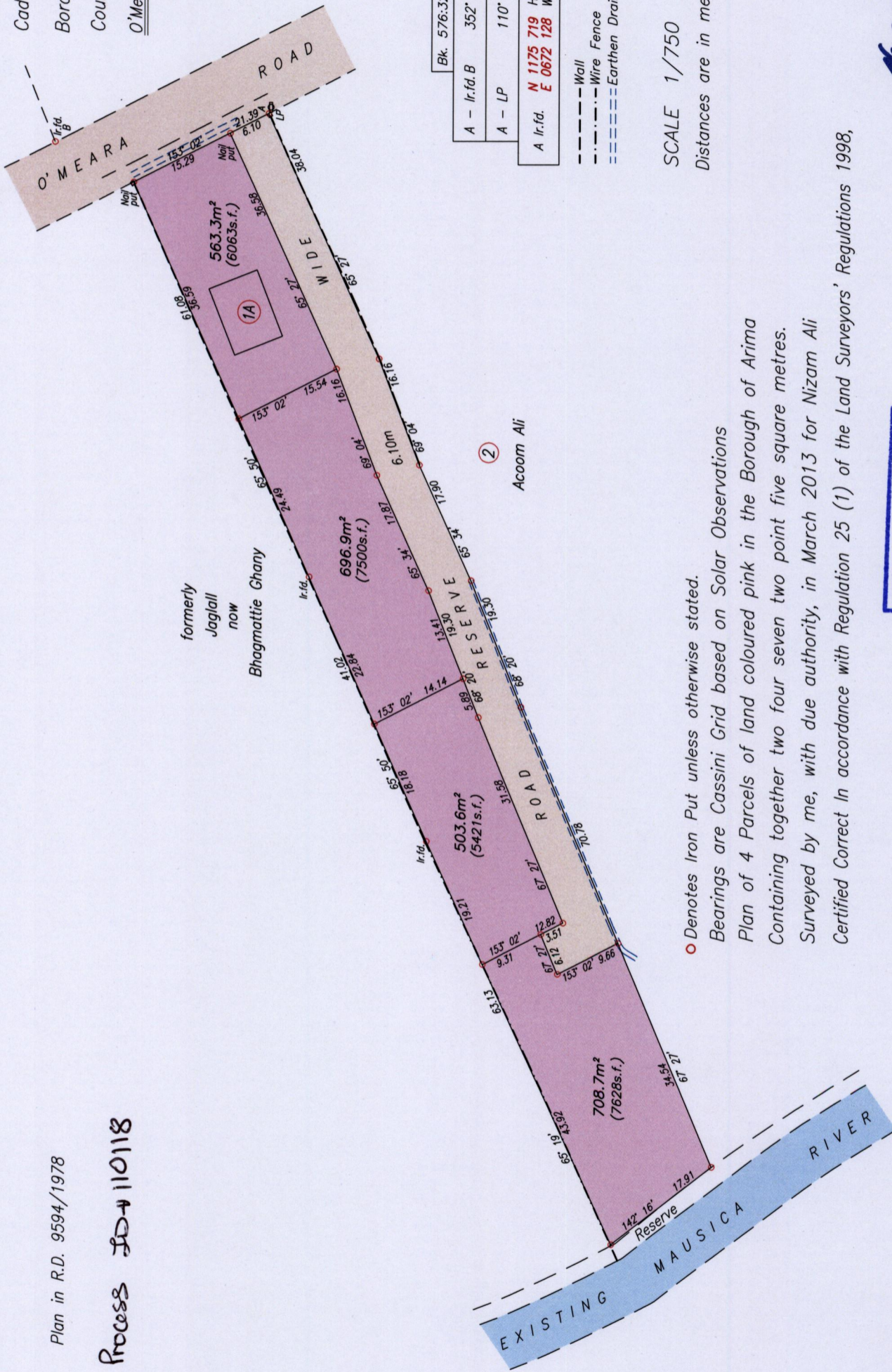
Borough of Arima
County of St. George
O'Meara Road, Arima

Plan in R.D. 9594/1978

Process LD-110118



1557



Bk. 576:32			
A - Ir.f.d.B	352° 33'	30.42	
A - LP	110° 47'	0.95	
A Ir.f.d.	N 1175 719 E 0672 128	Hand Held GPS WGS84 Zone20	

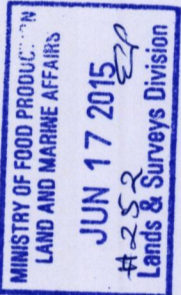
- Wall
- - - Wire Fence
- Earthen Drain

SCALE 1/750
Distances are in metres

○ Denotes Iron Put unless otherwise stated.
Bearings are Cassini Grid based on Solar Observations
Plan of 4 Parcels of land coloured pink in the Borough of Arima
Containing together two four seven two point five square metres.
Surveyed by me, with due authority, in March 2013 for Nizam Ali
Certified Correct in accordance with Regulation 25 (1) of the Land Surveyors' Regulations 1998,



Nasser
17 June



Entered On.....

Trinidad & Tobago Land Surveyor.....2015

110

344