

U.P.R.N.
DE2004 034443 84D001

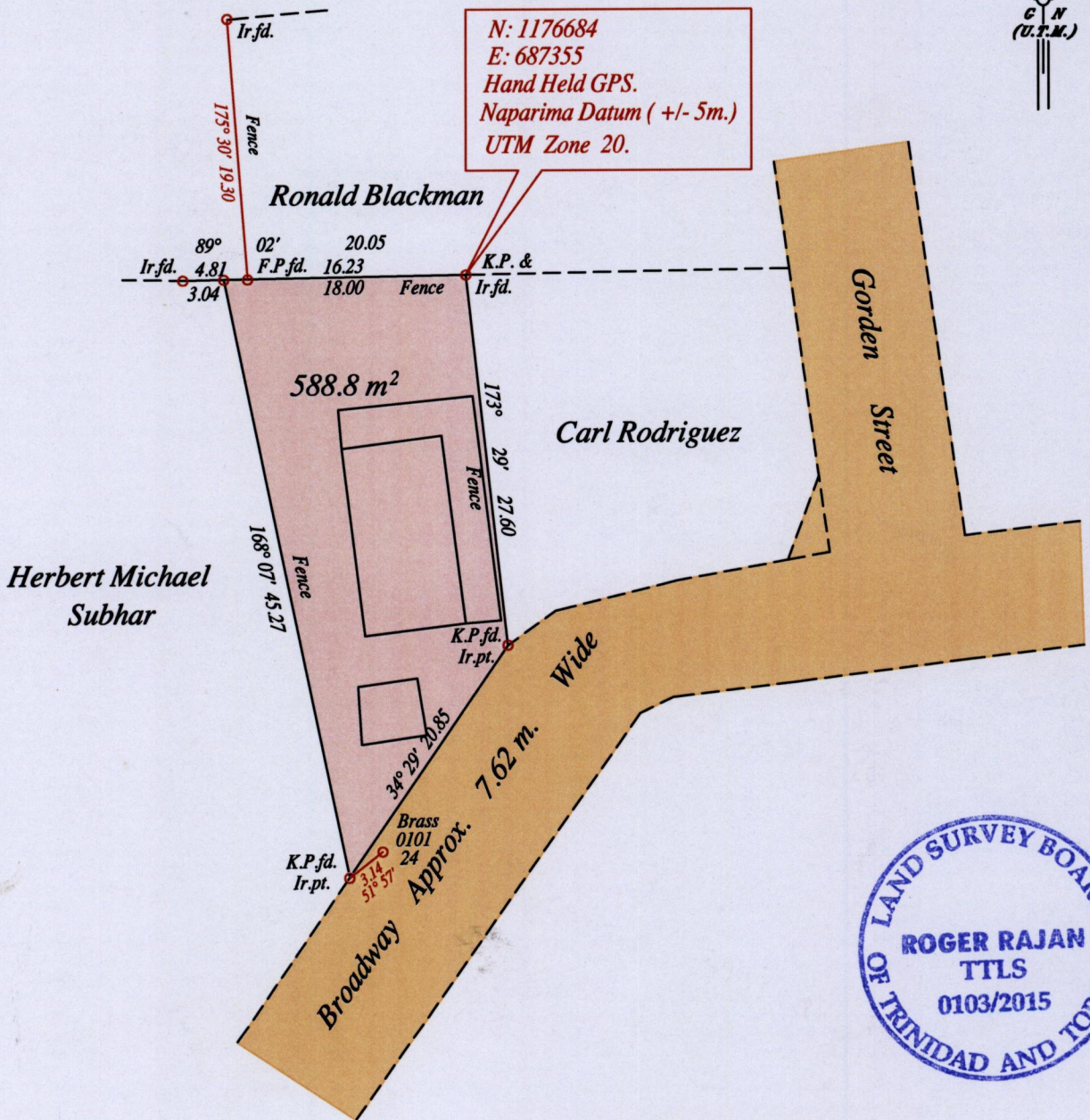
Process ID # 110070

1557 Borough of Arima

County of St. George

Cadastral Sheet B.19.P., 24C
1/b

1008



Vide Bk. 1046 fol. 149 & 150

SCALE:- 1:2,500

Distances are in metres

○ Denotes Iron put, except stated otherwise.

Note: Bearings are U.T.M. grid based on solar observations

PLAN of a Parcel of land coloured pink in the Borough of Arima.

Containing five hundred and eighty eight point eight square metres.

Surveyed by me, with due authority, in May 2015, for Ronald Affoon.

Certified correct in accordance with Regulation 25(1) of the Land Surveyors' Regulations 1998.

Checked by.....

[Signature]

Entered on Trinidad & Tobago Land Surveyor..... 17th June 2015

MINISTRY OF FOOD PRODUCTION
LAND AND MARINE AFFAIRS
JUN 11 2015
#166
Lands & Surveys Division