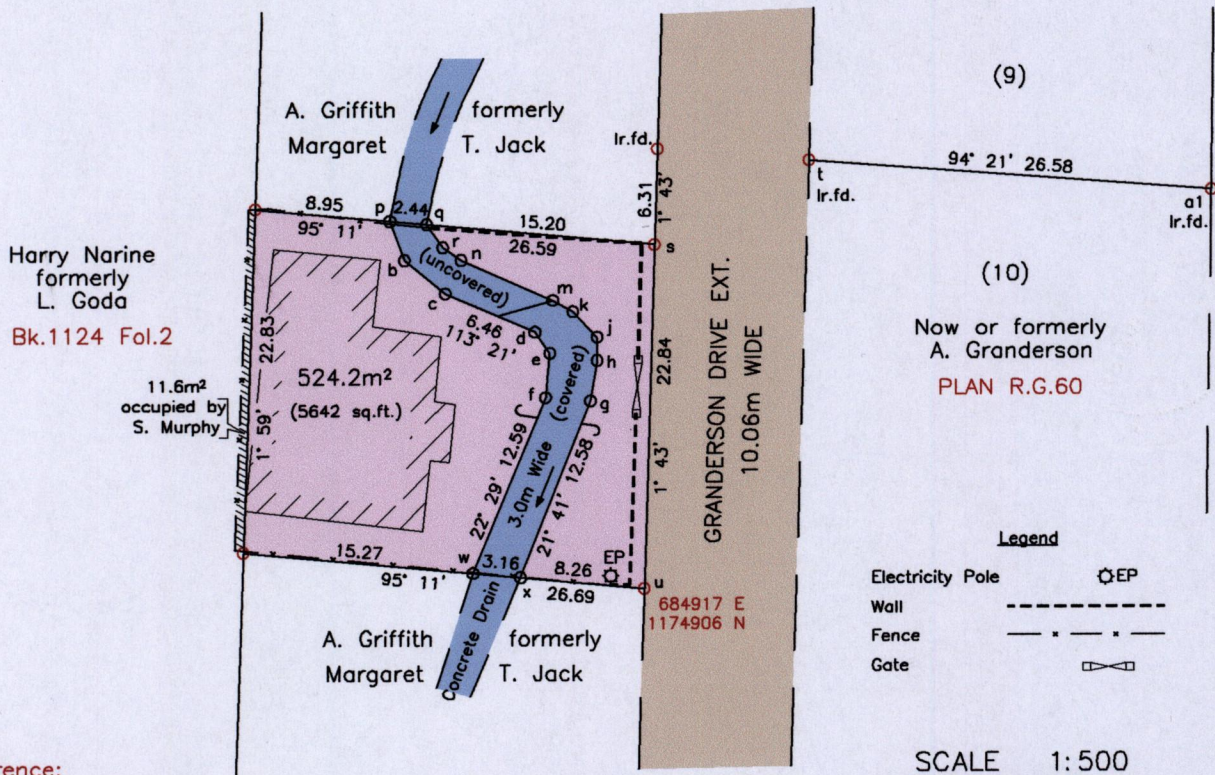


24B  
 Cadastral Sheet 4/b (B.24.C.)  
 Borough of Arima  
 County of St. George  
 D'Abadie  
 Process ID# 110057

1557 105

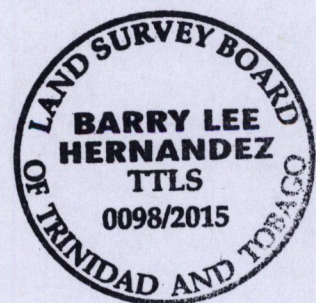
From	To	Bearing	Distance
p	b	159° 28'	2.76
b	c	129° 30'	3.51
d	e	144° 58'	1.73
e	f	185° 29'	2.98
g	h	9° 25'	2.74
h	j	359° 42'	1.54
j	k	316° 50'	2.35
k	m	299° 29'	1.53
m	n	293° 50'	6.65
n	r	304° 59'	1.48
r	q	324° 45'	1.86
s	a	1° 43'	29.45
a1	z	0° 48'	45.59
t	y	181° 43'	132.61
u	v	181° 42'	96.92
s	t	61° 34'	11.64

G N  
 U.T.M.



Reference:  
 Bk.1096 Fol.121

- Notes:
- Denotes Ir.pt. unless otherwise stated
  - b,c,d,e,f,g,h,i,j,k,m,n,p,q,r,w,x = Edge of Concrete Drain
  - Bearings are U.T.M. Grid based on Solar Observations
  - Previous survey by Keith Scott in Aug. 2004 for Kirt A. Sherwood
  - Coordinates obtained by handheld GPS (UTM Zone 20, Naparima ± 5.0m)



PLAN of a parcel of land coloured pink in the Borough of Arima  
 Containing five hundred and twenty four point two square metres  
 Surveyed by me, with due authority, in May 2015 for Sophia Murphy  
 Certified Correct in accordance with Regulation 25(1) of the Land Surveyors Regulations 1998.

Checked by ..... *Barry Hernandez* .....  
 Entered on ..... Trinidad and Tobago Land Surveyor, *29<sup>th</sup> May 2015* .....

