

24B
 Cadastral Sheet 4/b (B.24.C.)
 Borough of Arima
 County of St. George

1557

104

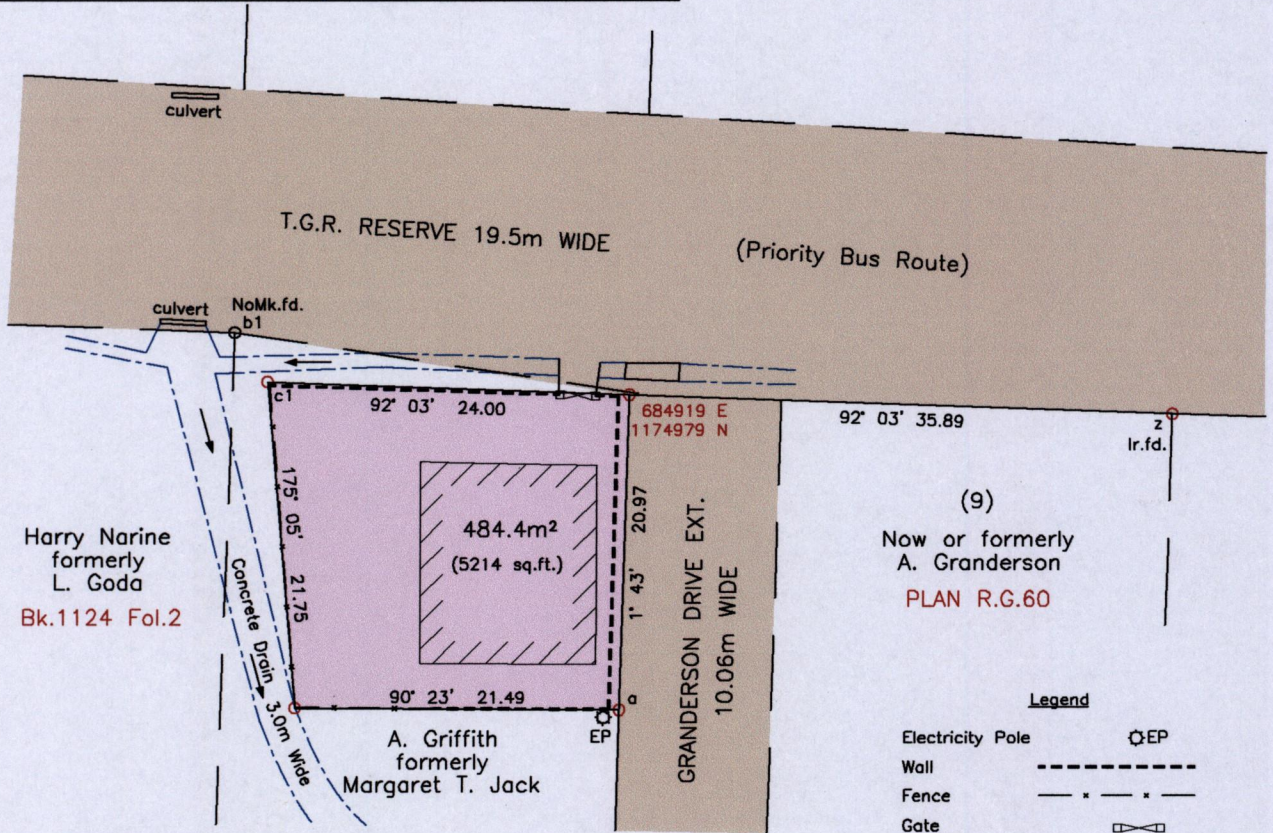
D'Abadie

Process ID# 110045

G N
 U.T.M.

From	To	Bearing	Distance
a	s	181° 43'	29.45
s	v	181° 43'	119.80
s	t	61° 34'	11.64
t	a1	94° 21'	26.58
z	a1	180° 48'	45.59
t	y	181° 43'	132.61
b1	c1	146° 05'	3.93

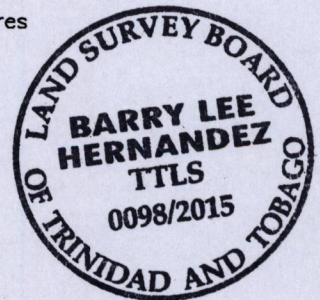
○ Denotes Ir.f.d.
 Scale 1:5000



Reference:
 Bk.1096 Fol.121

SCALE 1:500
 Distances are in metres

- Notes: ○ Denotes Ir.pt. unless otherwise stated
 Bearings are U.T.M. Grid based on Solar Observations
 Previous survey by Keith Scott in Aug. 2004 for Kirt A. Sherwood
 Coordinates obtained by handheld GPS (UTM Zone 20, Naparima ± 5.0m)



PLAN of a parcel of land coloured pink in the Borough of Arima
 Containing four hundred and eighty four point four square metres
 Surveyed by me, with due authority, in May 2015 for Erla White
 Certified Correct in accordance with Regulation 25(1) of the Land Surveyors Regulations 1998.

Checked by
 Entered on
 Trinidad and Tobago Land Surveyor, *Barry Hernandez* 29th May 2015

