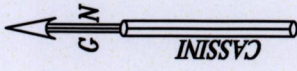


See Reg. Deed No. 13522/1999

Process # 110041

Ward of Blanchisseuse  
County of St. George  
Cadastral Sheet B.B.F & J. 3F  
4/a

LAS CUEVAS  
See Plan J.C.34



1557

SCALE 1/1000

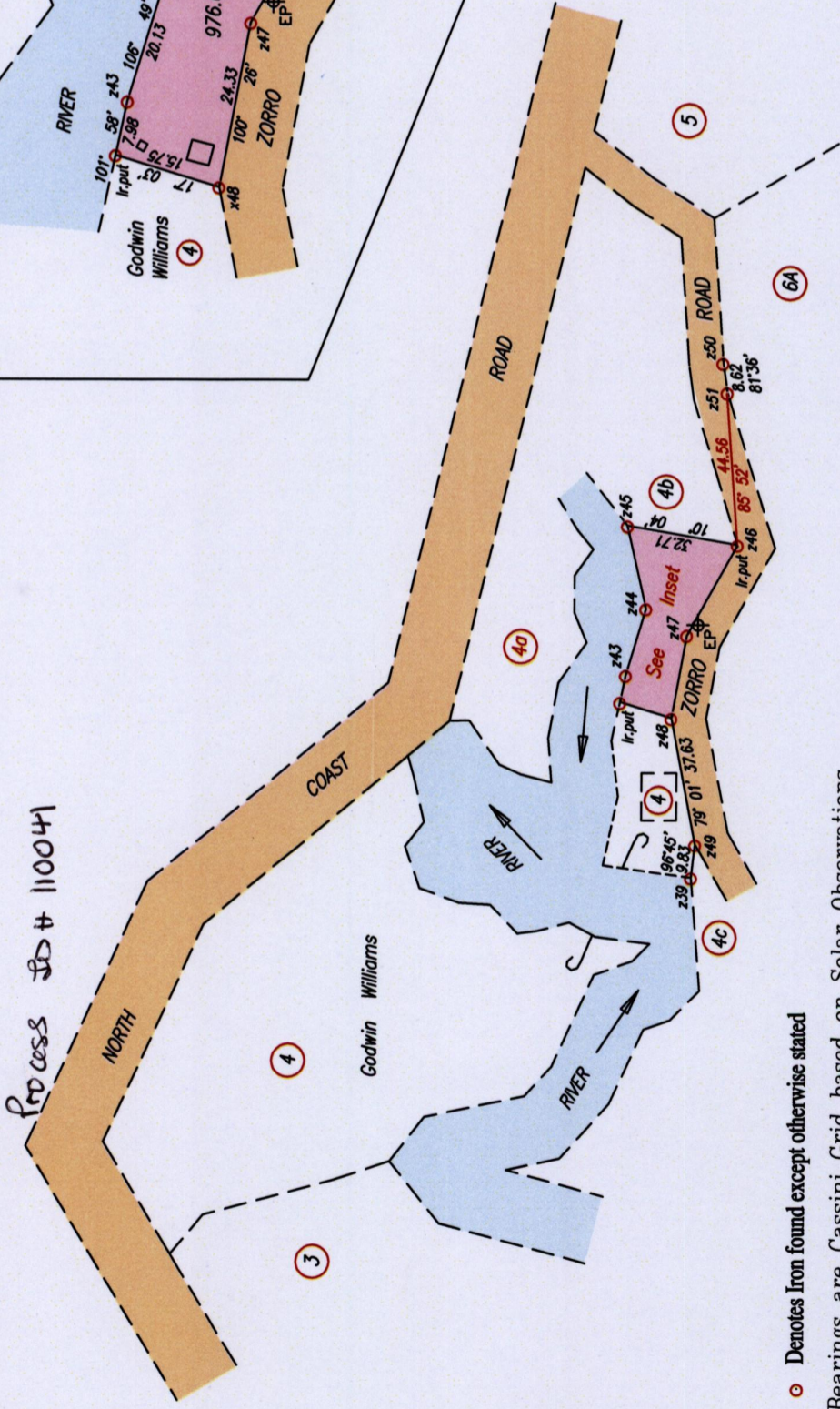
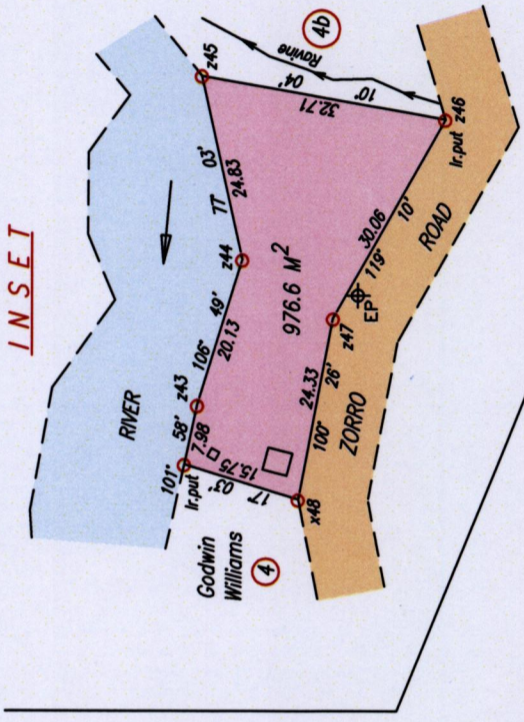
SCALE 1/2000

Distances are in metres

Ir.f.d. x48

674019 mE, 1190482 mN  
U.T.M. 20, Nap. (+/- 3m.)  
G.P.S. (Handheld)

102



o Denotes Iron found except otherwise stated

Bearings are Cassini Grid based on Solar Observations

To obtain UTM bearings, subtract 18 minutes

PLAN of a Parcel of land coloured pink in the Ward of Blanchisseuse

Containing nine hundred and seventy six point six square metres

Surveyed by me with due authority, on May 31st, 2015 at the request of Darron Williams

Certified Correct in accordance with Regulation 25 (1) of The Land Surveyors' Regulations 1998,

Entered on . . . . .

Trinidad & Tobago Land Surveyor (T.T.L.S) . . . . . 8 (6) . . . . . 2015

