

1557

Cadastral Sheet B.25.I.

24C
4/c

1001

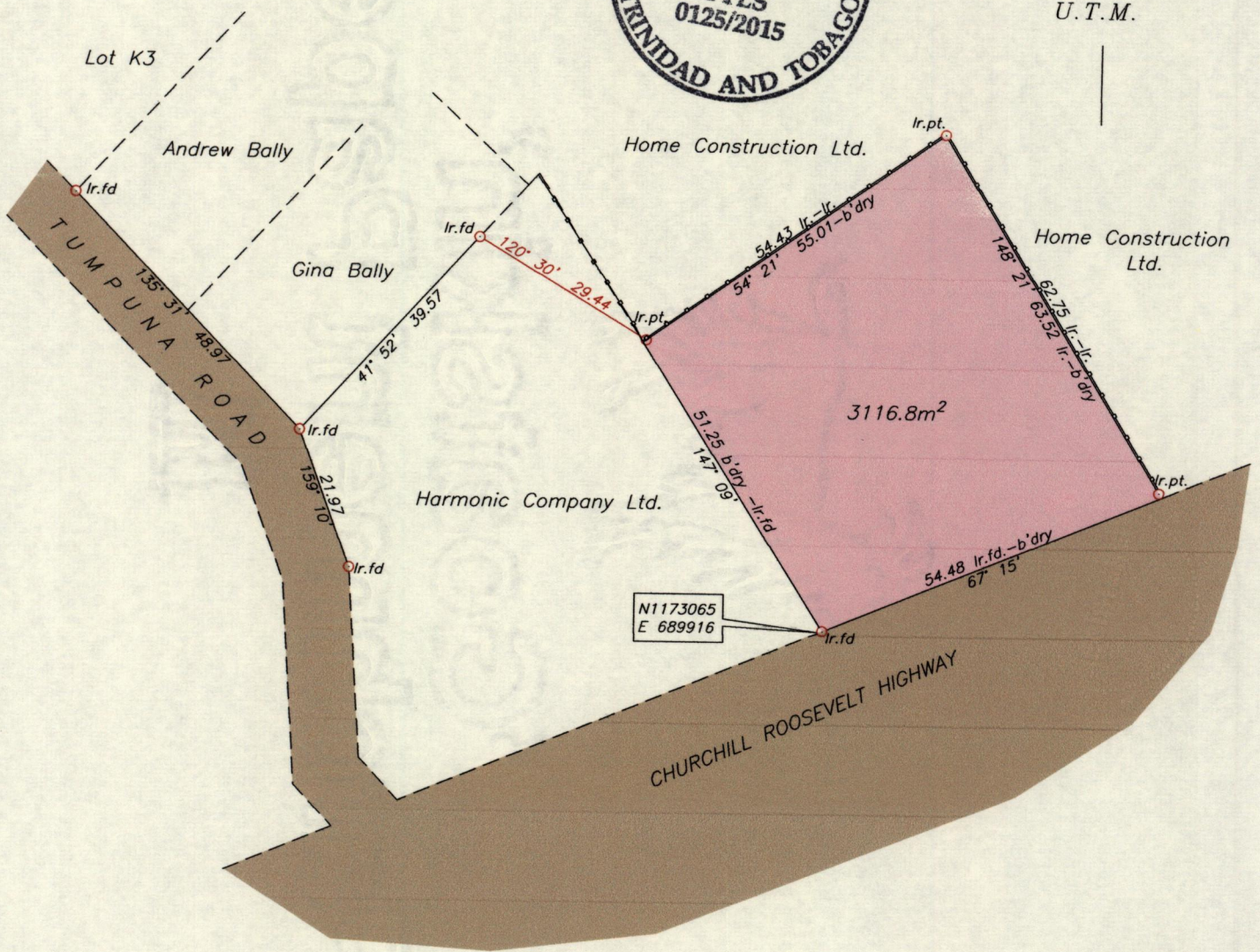
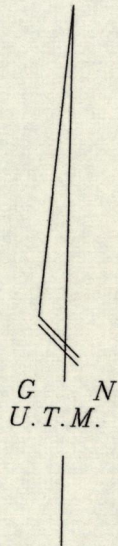
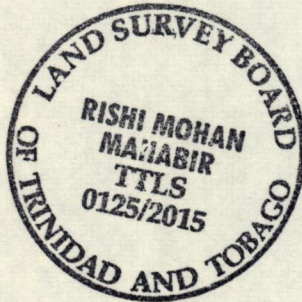
Process ID# 110039

Registered Deed 15706 of 1990

Borough of Arima

County of St. George

Amended Plan



Wall

Co-ordinates are UTM zone 20N Naparima Datum +/-5m scaled from L.&S. 1/10000 sheet.

Bearings are U.T.M. grid based on solar observations

Note: To obtain compass bearings add 28 minutes.

See Plan G.A.237

SCALE 1/1000

Distances are in metres

PLAN of a Parcel of land coloured pink in the Borough of Arima
Containing three one one six point eight square metres

Prepared by me, with due authority, in April 2015 for Home Construction Ltd.

Certified Correct in accordance with Regulation 25 (1)
of the Land Surveyors Regulations 1998.

Checked by.....

Entered..... Trinidad & Tobago Land Surveyor 2nd June 2015

K:HCL\Santa Rosa\The Crossings\Yvonne Boodoo\Yvonne Boodoo

