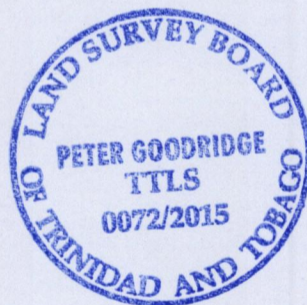
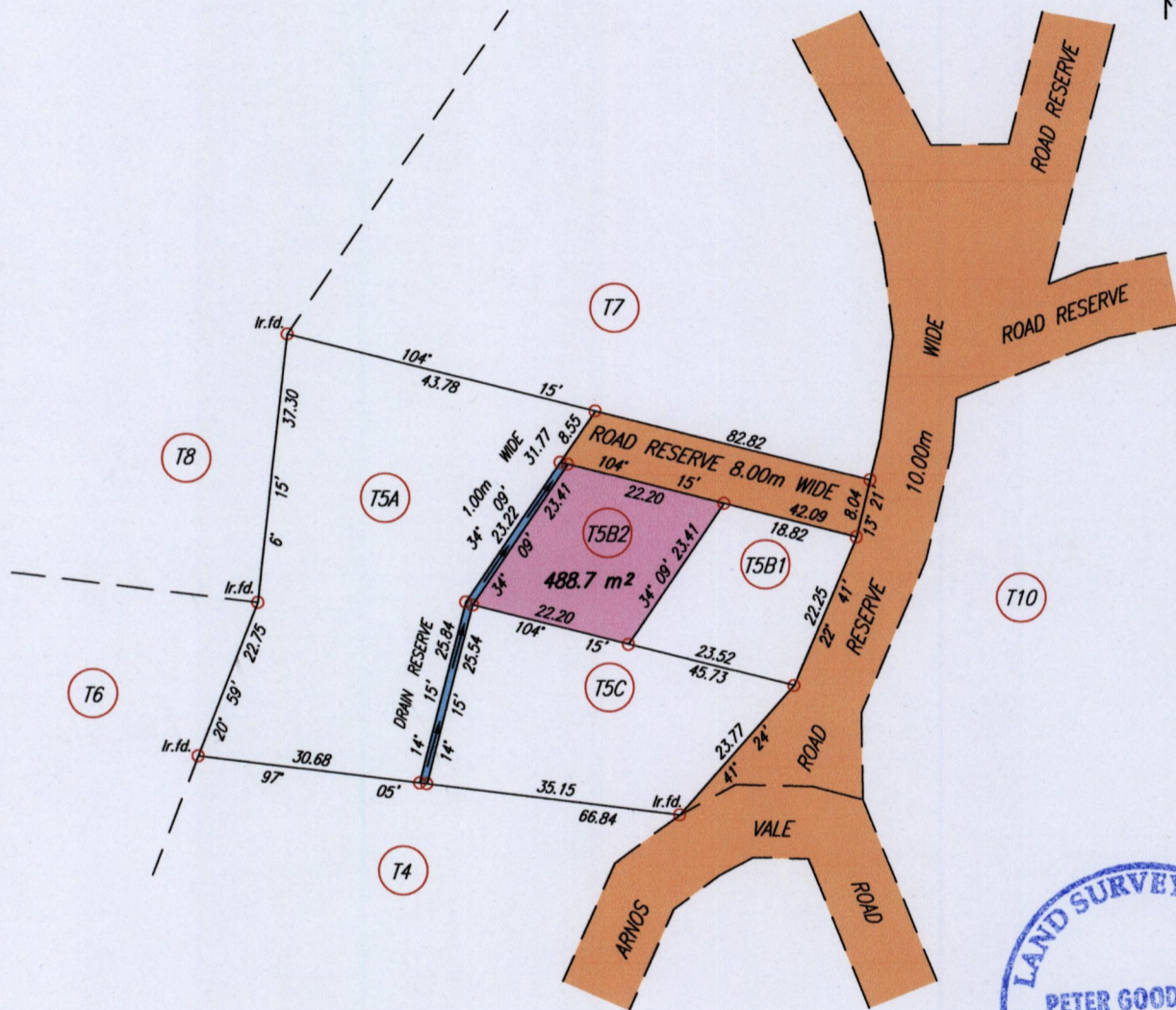
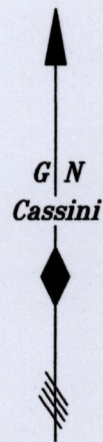


1556

Process JD#109275

ARNOS VALE ESTATE



Coordinates of G (Ir.f.d.) 0745672mE, 1241976mN (from General Plan)

U.T.M. 20WGS 84 (+/- 4.00m)

G.P.S. Direct Observation using hand held receiver

SCALE 1:1000

Distances are in METRES

○ Denotes Iron put except where otherwise stated

Bearings are Cassini Grid based on Solar Observations

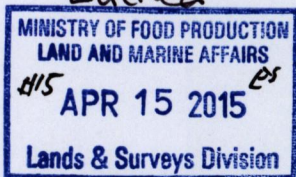
PLAN of a Parcel of land coloured pink in the Ward of Tobago

Containing four hundred and eighty eight point seven square metres

Surveyed by me, with due authority, in June 2013 for Land Vision Ltd.

Certified Correct in accordance with Regulation 25 (1) of The Land Surveyors Regulations 1998,

Entered



*[Handwritten signature]* TTLS

Trinidad & Tobago Land Surveyor

C:\LESS 2013\TOBAGO\LAND VISION-T5B.dwg.

FILE NO: A044

2015

10th April