

U.P.I.N. No.

"MILFORD COURT, BON ACCORD"

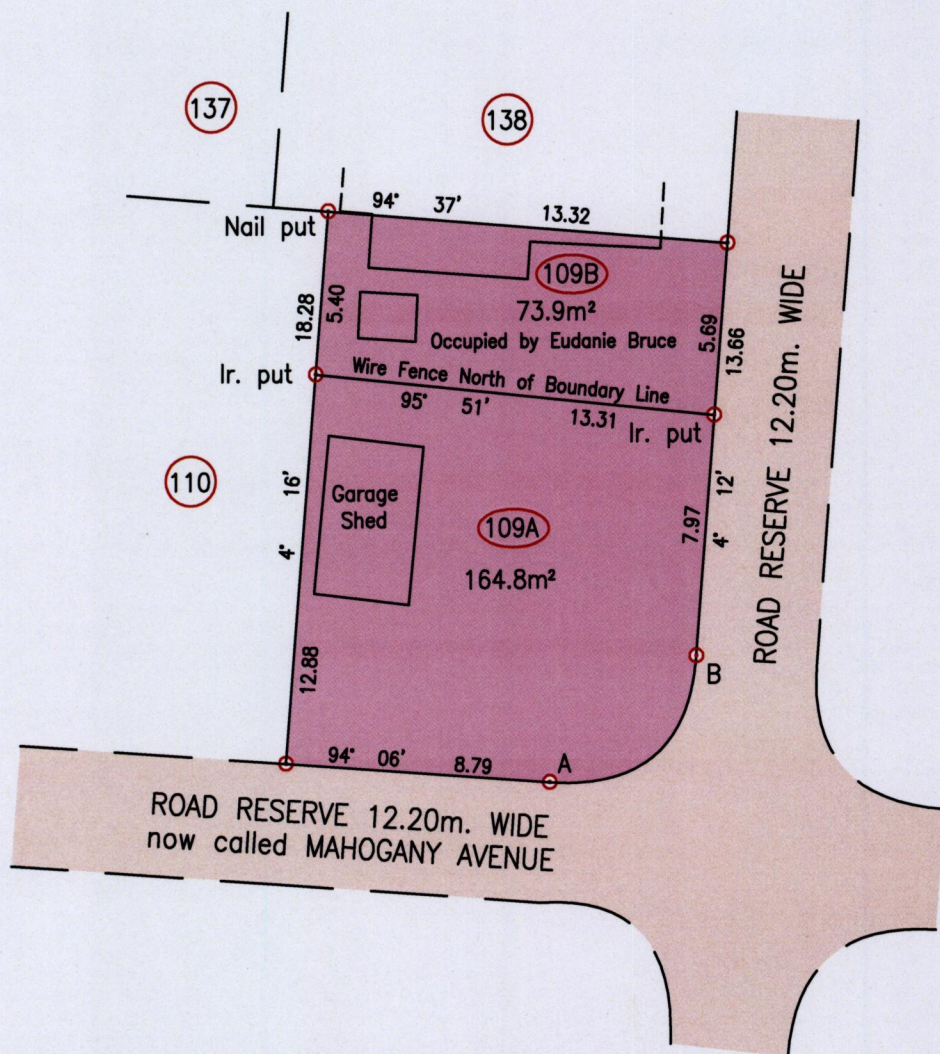
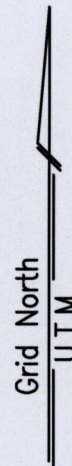
Process ~~10~~ 109268

Cadastral Sheet $\frac{1E}{6/a/4}$ 1.21.B.

Ward of Tobago

Parish of St. Patrick

Vide Plan A.M.53



CHORD	BEARING	DIST.	RADIUS	SEG. AREA
A - B	49° 23'	6.41	4.49	5.9m²

A	E 737891
	N 1234174

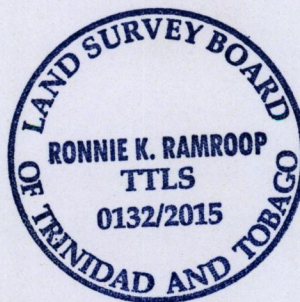
Reliability Error \pm 5.0 m.

Coordinates are UTM Zone 20, Naparima 1955 from Garmin GPSmap 60CSx Handheld GPS Receiver

Bearings are U.T.M. Zone 20 Grid based on Solar Obs.

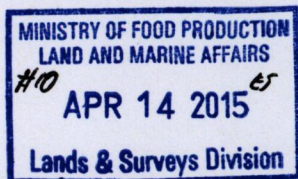
○ Denotes Iron Found unless otherwise stated

Plan of 2 Parcels of land coloured pink in the Ward of Tobago Containing together two hundred and thirty eight point seven square metres Surveyed by me, with due authority, in February 2015 at the request of The Division of Settlements and Labour, Tobago House of Assembly Certified correct in accordance with Regulation 25(1) of the Land Surveyors Regulations 1998.



SCALE 1:250

Distances are in Metres



[Signature]
Trinidad & Tobago Land Surveyor 13th April 2015

Entered