

1555

218

43C

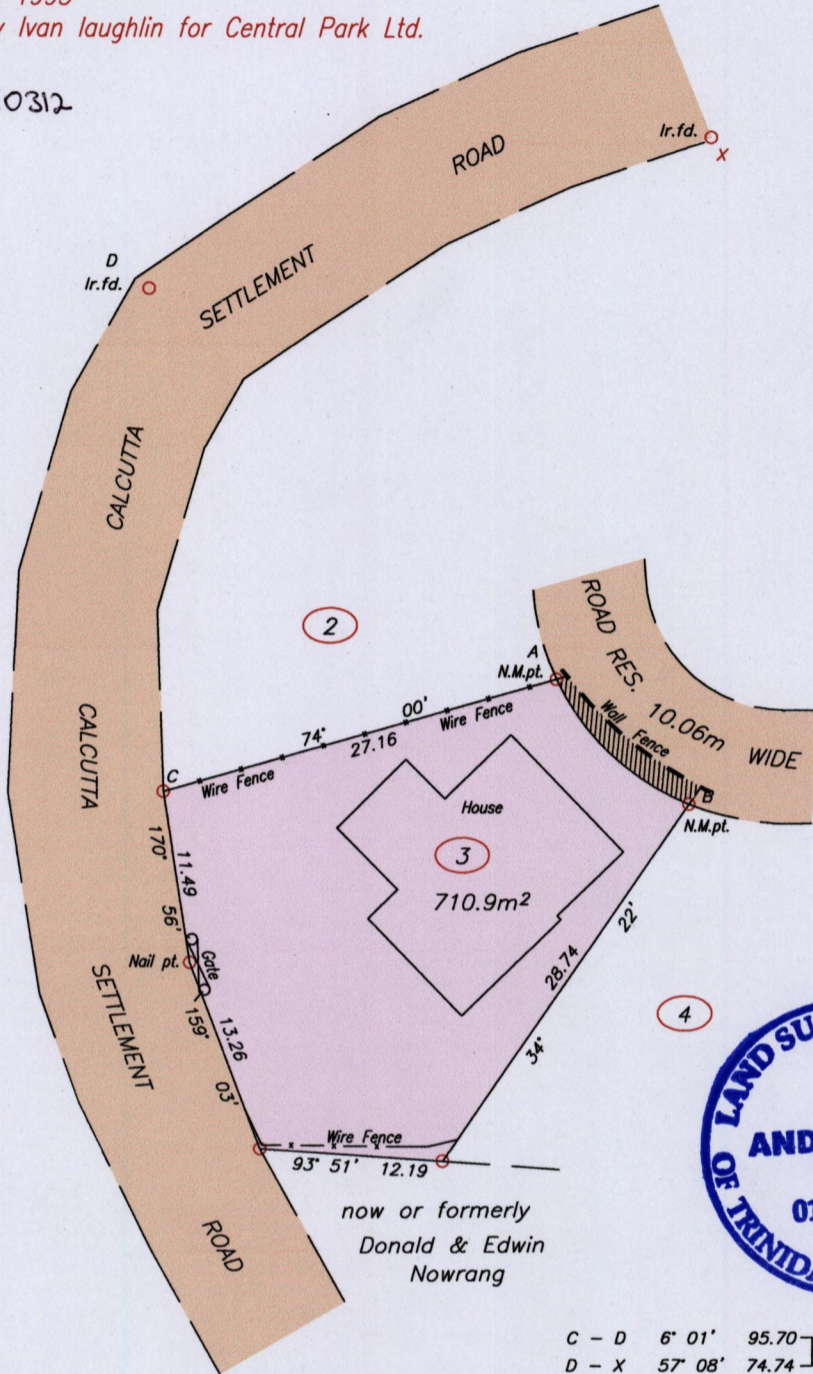
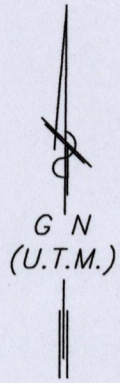
CENTRAL PARK
COUVA

Cadastral Sheet 4/a (D.12.P.)
Ward of Montserrat
County of Caroni

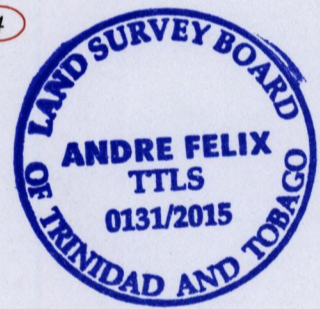
REFERENCES:

Reg. Deed 18630 of 1980
Reg. Deed 6075 of 1995
Surveyed in 1980 by Ivan Laughlin for Central Park Ltd.

Process ID# 110312



now or formerly
Donald & Edwin
Nowrang



C - D 6° 01' 95.70
D - X 57° 08' 74.74 } Not to scale

CURVE DATA			
CHORD (A-B)			
Parcel	Bearing	Distance	Radius
3	133°14'	12.13	16.76

N 1152749
X = E 672157 +/- 3.0m
UTM 20 Naparima 1955 Datum
Hand Held GPS

SCALE 1:500

Distances are in METRES

- Denotes Iron put unless otherwise stated
- Bearings are U.T.M. Grid based on Solar observations

PLAN of a Parcel of land coloured pink in the Ward of Montserrat
Containing seven hundred and ten point nine square metres
Surveyed by me, with due authority, in November 2014 for Ann Marie Lewis
Certified correct in accordance with Regulation 25 (1) of the Land Surveyors Regulations 1998.

Andre Felix

T.T.L.S.

Entered on

Trinidad & Tobago
Land Surveyor

19th June

20.15.

